

GEOLOGIC MAP SOUTHERN CLEARWATER MOUNTAINS

PS Glavinovich, 1967



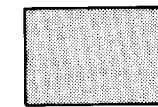
Contour interval 500 feet

Topography from U.S. Geological Survey Healy A-1 quadrangle. Datum is mean sea level.

EXPLANATION



Intrusive quartz bearing diorite.



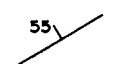
Intercalated andesitic and basaltic flows with greenstone, minor tuff, and related hypabyssal rocks.



Intercalated sedimentary and volcanic rocks. Includes andesite, basalt, black shale, mudstone, and minor sandstone.



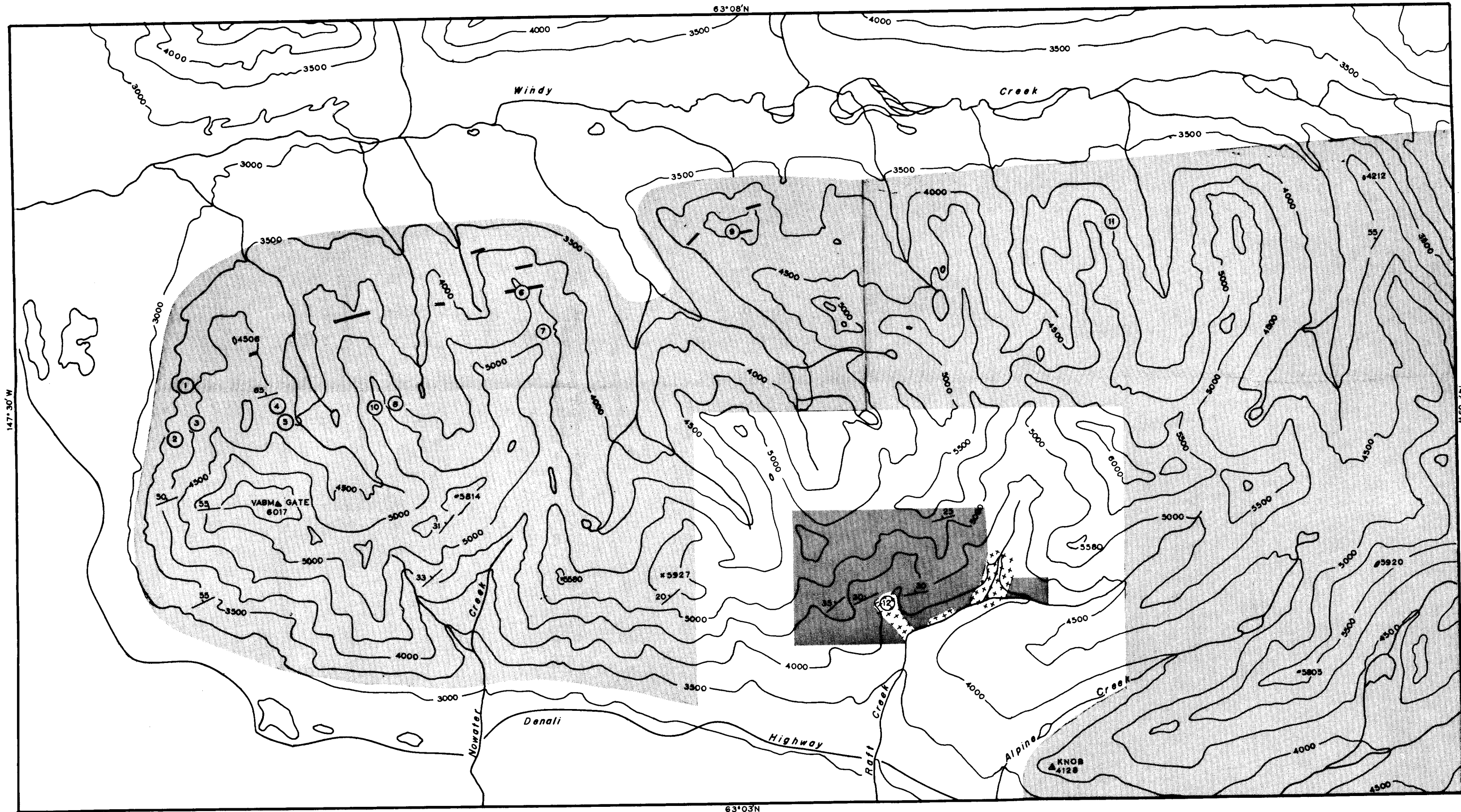
Shear zone



Attitude of layering and bedding.



Copper occurrence, numbers refer to description in text.



147° 30' W

147° 09' W

63° 08' N

63° 03' N