

Supporting Information for Spectral Ratios

Seismic response of Nenana sedimentary basin, central Alaska

Kyle Smith and Carl Tape

April 16, 2020

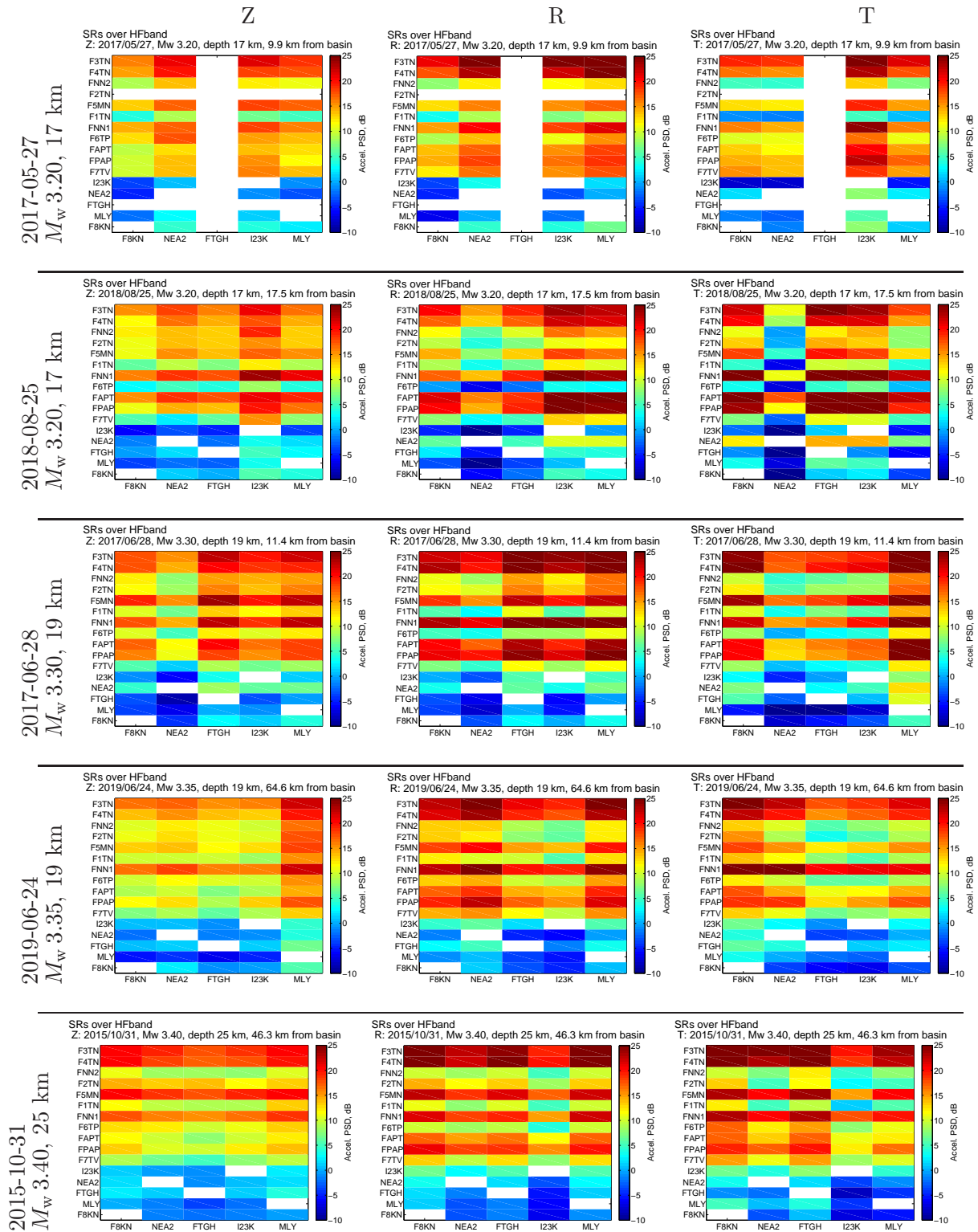


Figure SR1: **HFband**: Local and regional spectral ratios sorted by increasing **magnitude**. The vertical axis is sorted by descending SR's reference station F8KN in the transverse component from Figure 5 of *Smith and Tape* (2020). The horizontal axis is sorted by median distance to all local events.

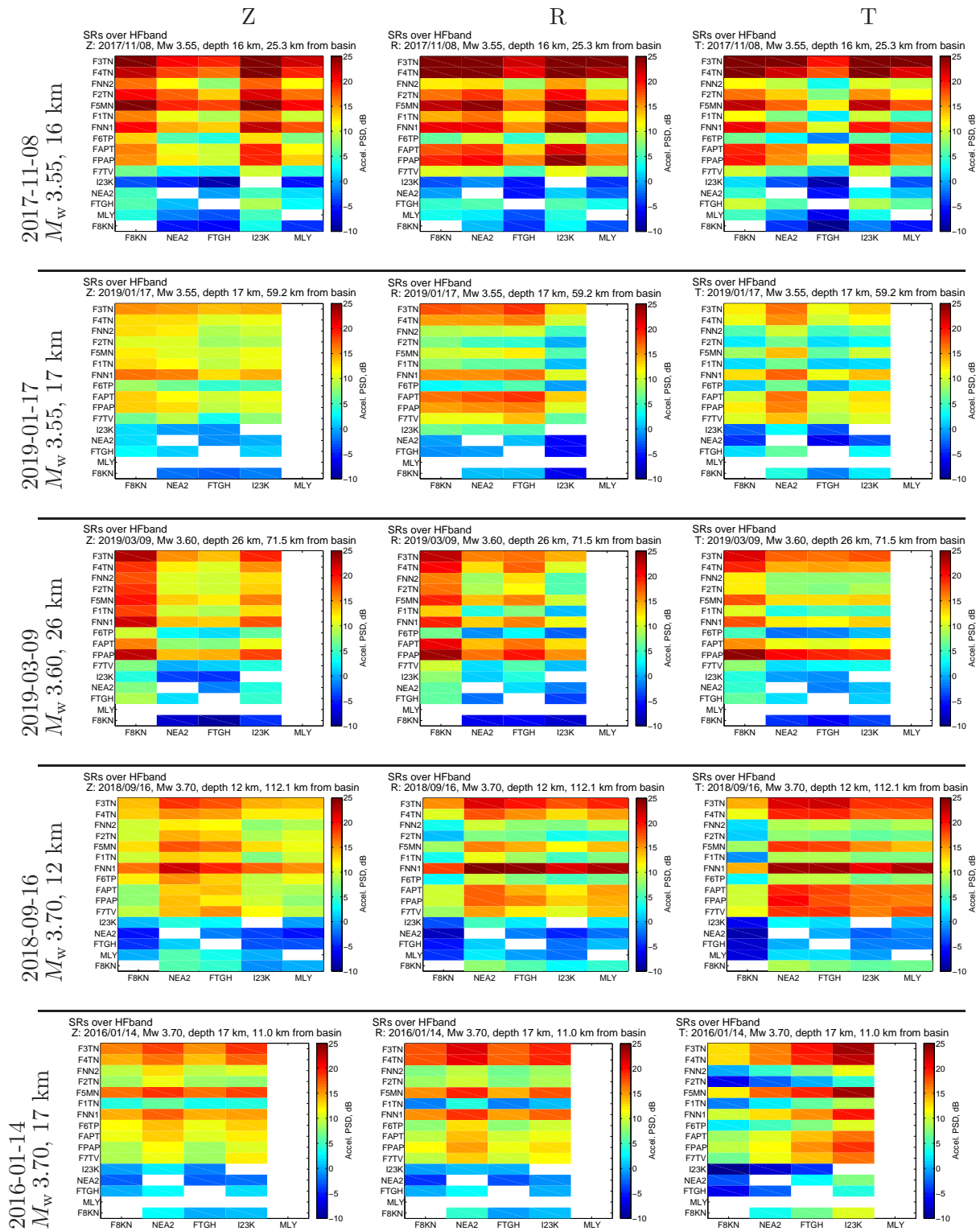


Figure SR2: **HFband**: Local and regional spectral ratios sorted by increasing **magnitude**. The vertical axis is sorted by descending SR's reference station F8KN in the transverse component from Figure 5 of *Smith and Tape* (2020). The horizontal axis is sorted by median distance to all local events.

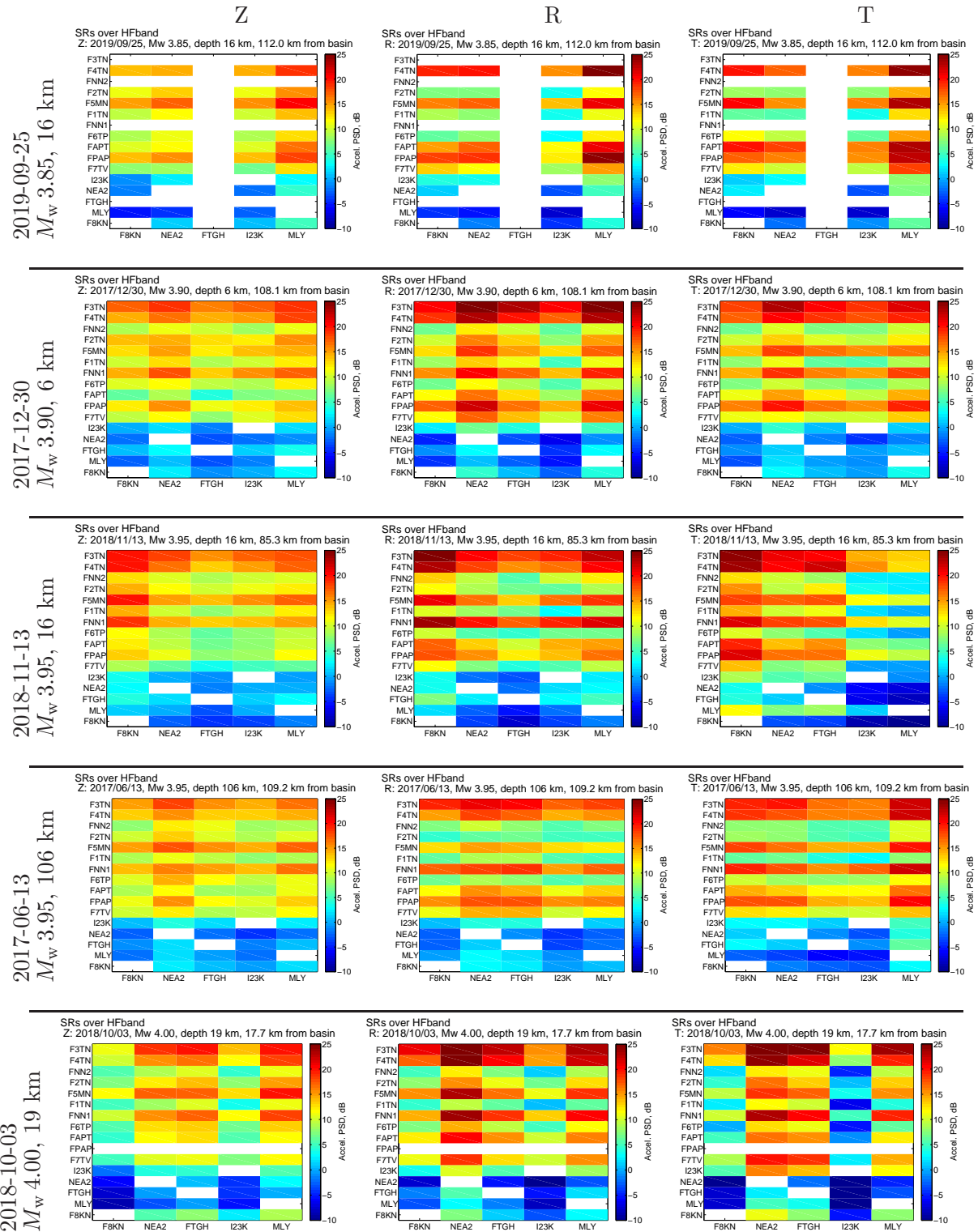


Figure SR3: **HFband**: Local and regional spectral ratios sorted by increasing **magnitude**. The vertical axis is sorted by descending SR's reference station F8KN in the transverse component from Figure 5 of *Smith and Tape* (2020). The horizontal axis is sorted by median distance to all local events.

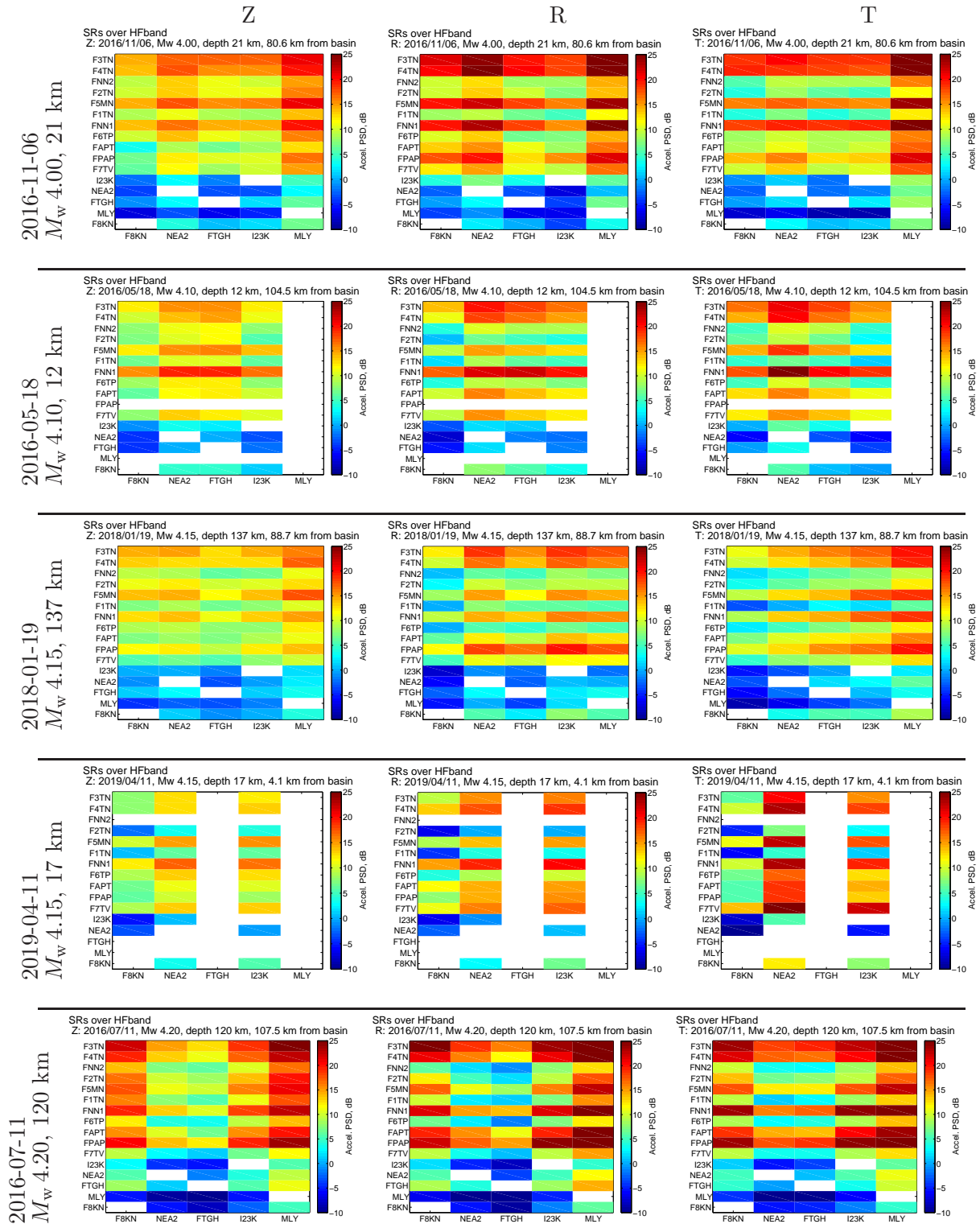


Figure SR4: **HFband**: Local and regional spectral ratios sorted by increasing **magnitude**. The vertical axis is sorted by descending SR's reference station F8KN in the transverse component from Figure 5 of *Smith and Tape* (2020). The horizontal axis is sorted by median distance to all local events.

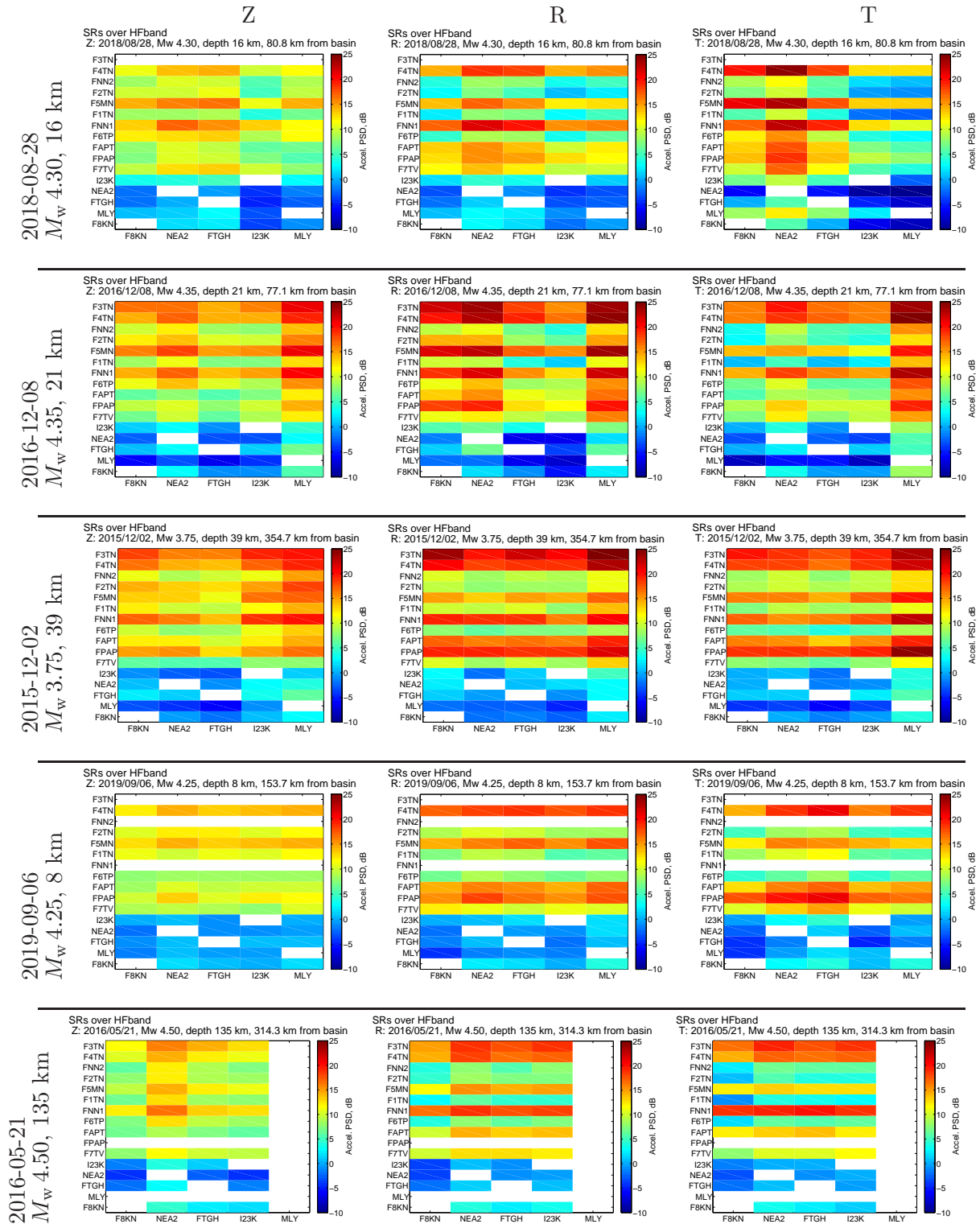


Figure SR5: **HFband**: Local and regional spectral ratios sorted by increasing **magnitude**. The vertical axis is sorted by descending SR's reference station F8KN in the transverse component from Figure 5 of *Smith and Tape* (2020). The horizontal axis is sorted by median distance to all local events.

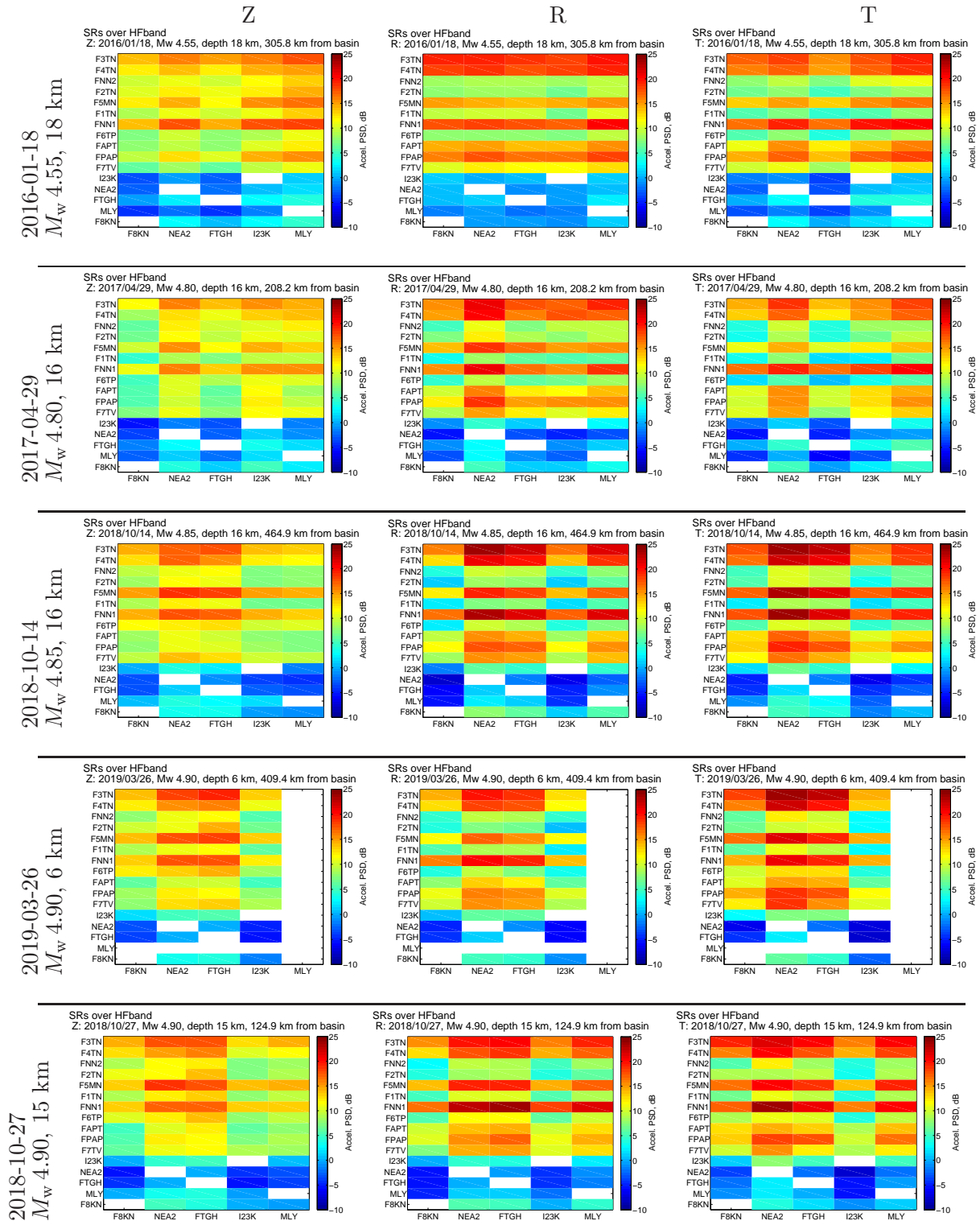


Figure SR6: **HFband**: Local and regional spectral ratios sorted by increasing **magnitude**. The vertical axis is sorted by descending SR's reference station F8KN in the transverse component from Figure 5 of *Smith and Tape* (2020). The horizontal axis is sorted by median distance to all local events.

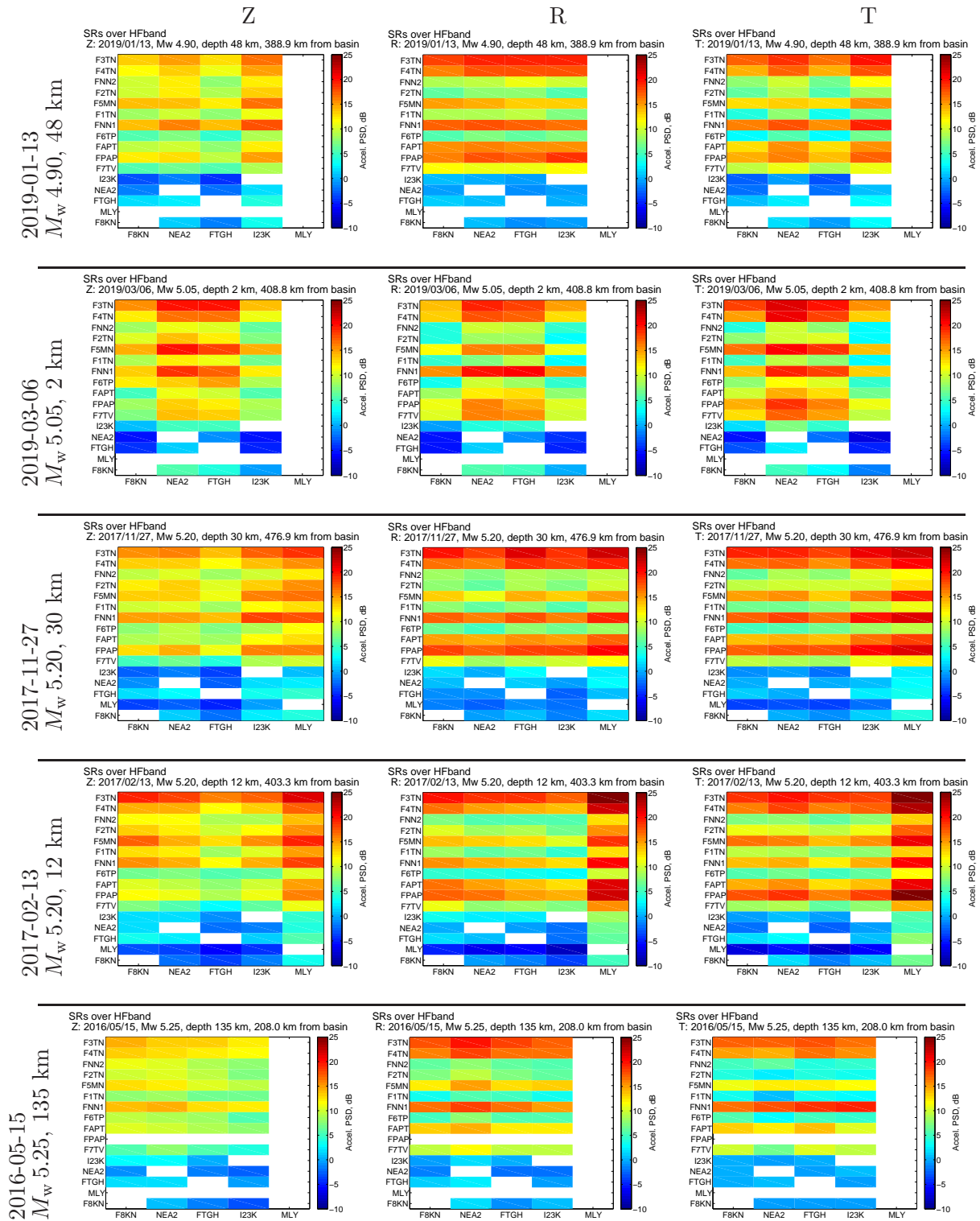


Figure SR7: **HFband**: Local and regional spectral ratios sorted by increasing **magnitude**. The vertical axis is sorted by descending SR's reference station F8KN in the transverse component from Figure 5 of *Smith and Tape* (2020). The horizontal axis is sorted by median distance to all local events.

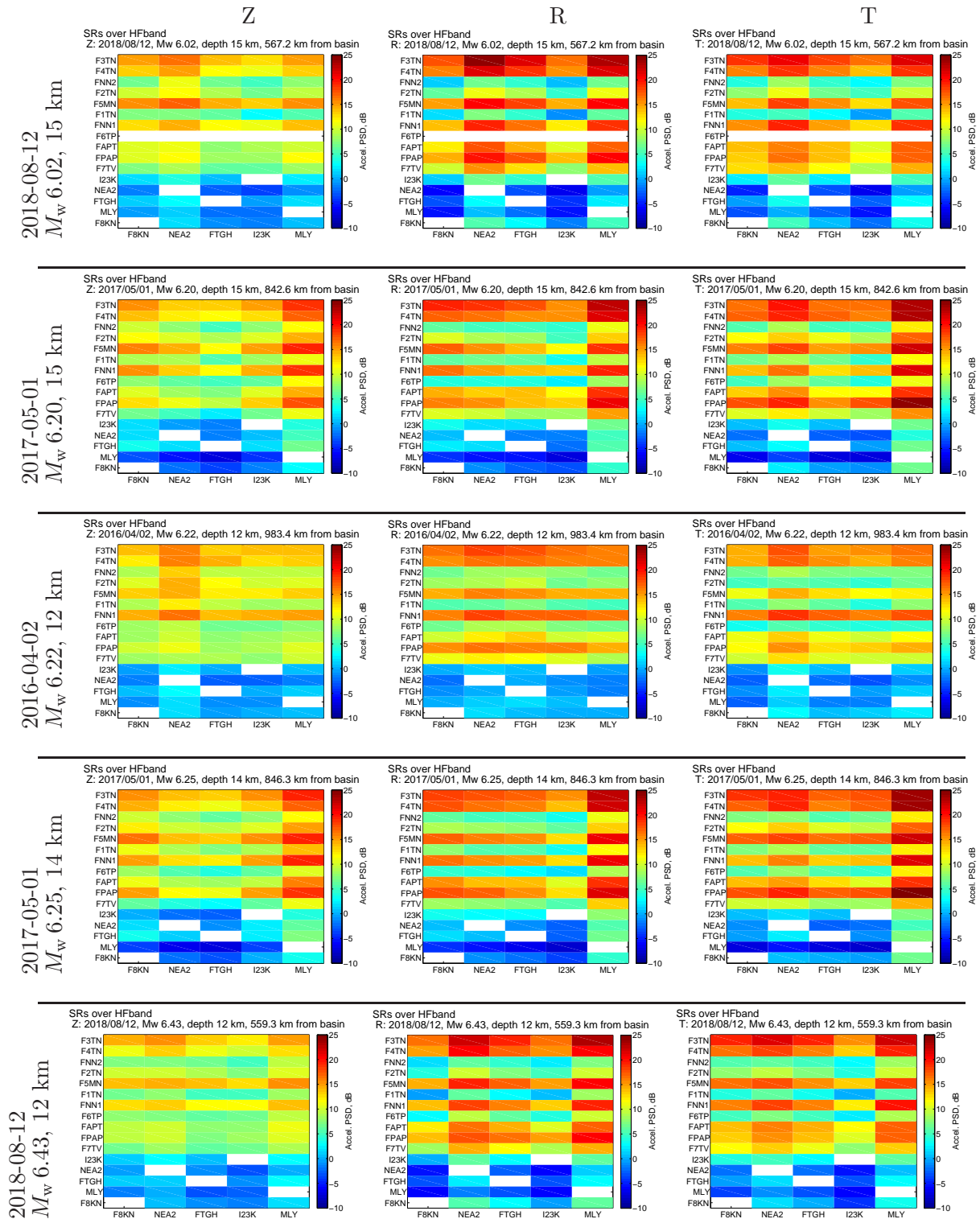


Figure SR8: **HFband**: Local and regional spectral ratios sorted by increasing **magnitude**. The vertical axis is sorted by descending SR's reference station F8KN in the transverse component from Figure 5 of *Smith and Tape* (2020). The horizontal axis is sorted by median distance to all local events.

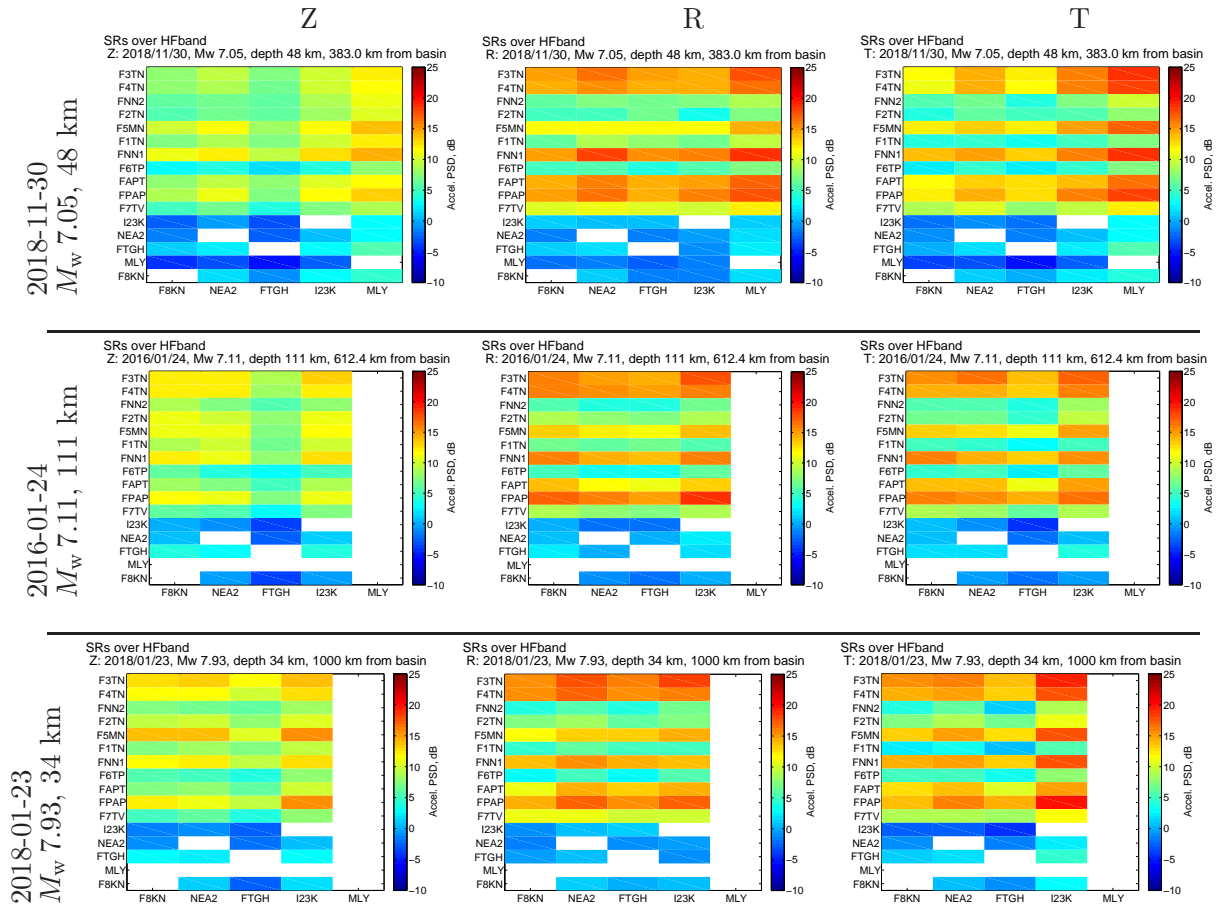


Figure SR9: **HFband**: Local and regional spectral ratios sorted by increasing **magnitude**. The vertical axis is sorted by descending SR's reference station F8KN in the transverse component from Figure 5 of *Smith and Tape* (2020). The horizontal axis is sorted by median distance to all local events.

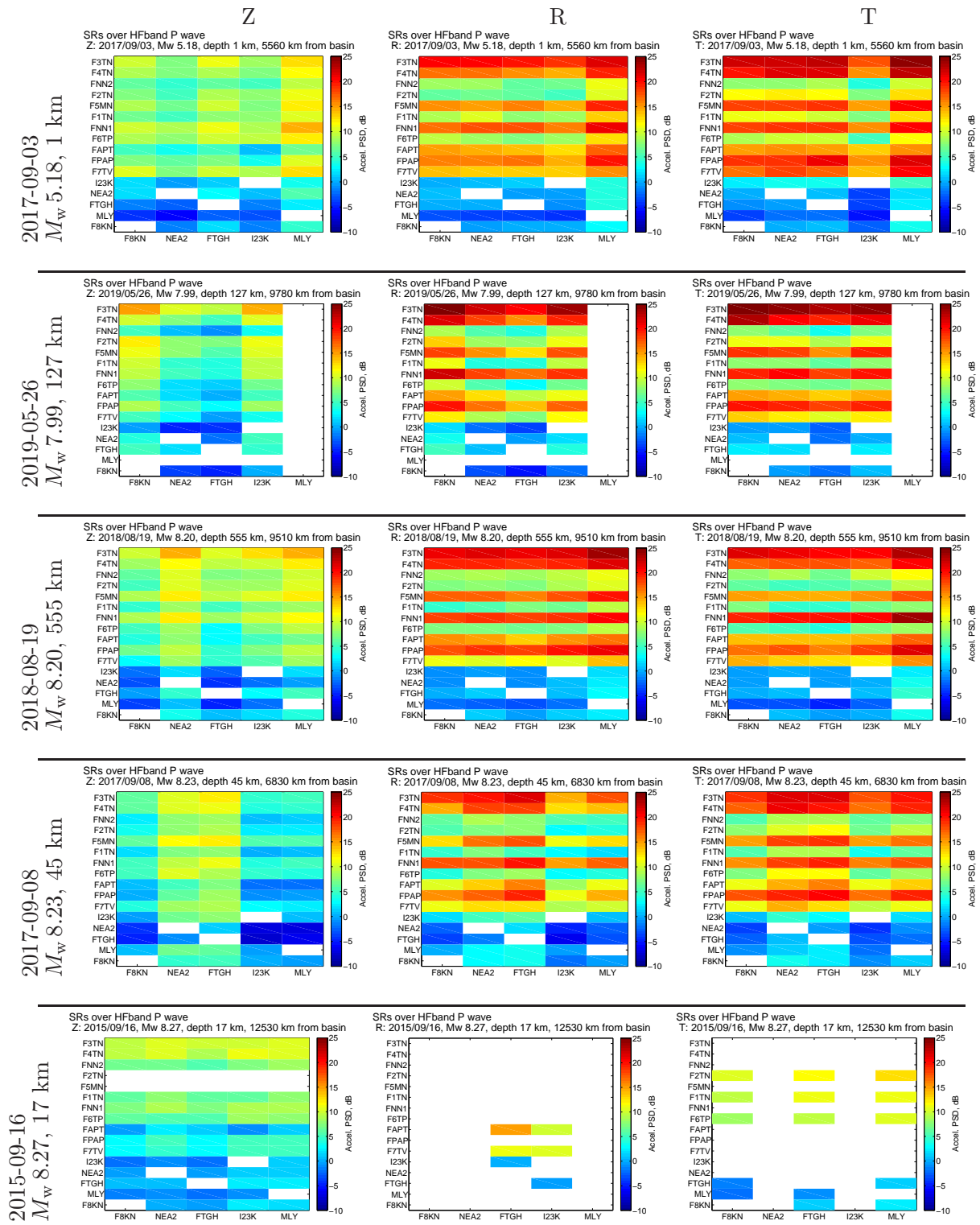


Figure SR10: **HFband: Teleseismic P** wave spectral ratios sorted by increasing **magnitude**. The vertical axis is sorted by descending SR's reference station F8KN in the transverse component in Figure 5. The horizontal axis is sorted by median distance to all local events.

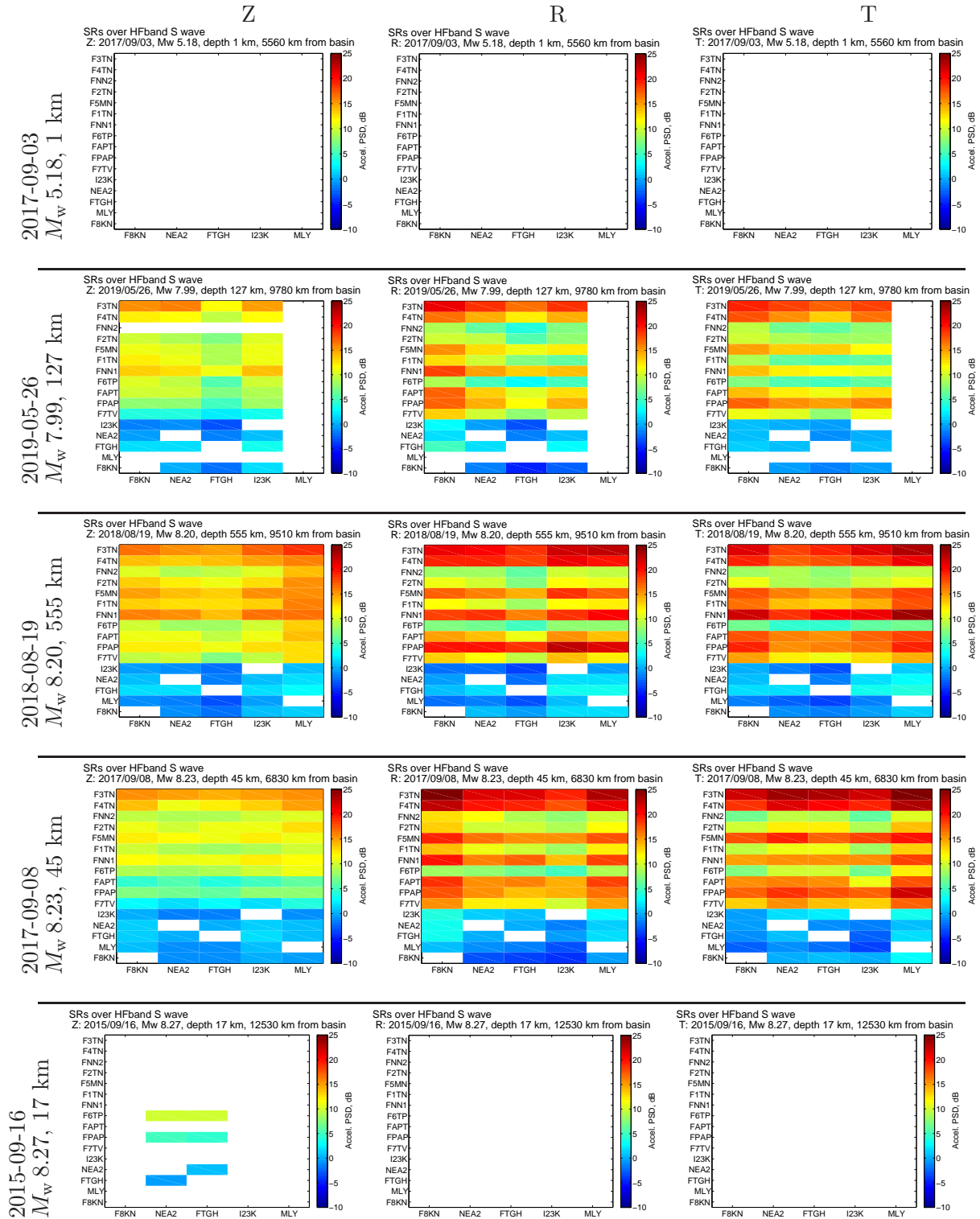


Figure SR11: **HFband: Teleseismic S** wave spectral ratios sorted by increasing **magnitude**. The vertical axis is sorted by descending SR's reference station F8KN in the transverse component in Figure 5. The horizontal axis is sorted by median distance to all local events.

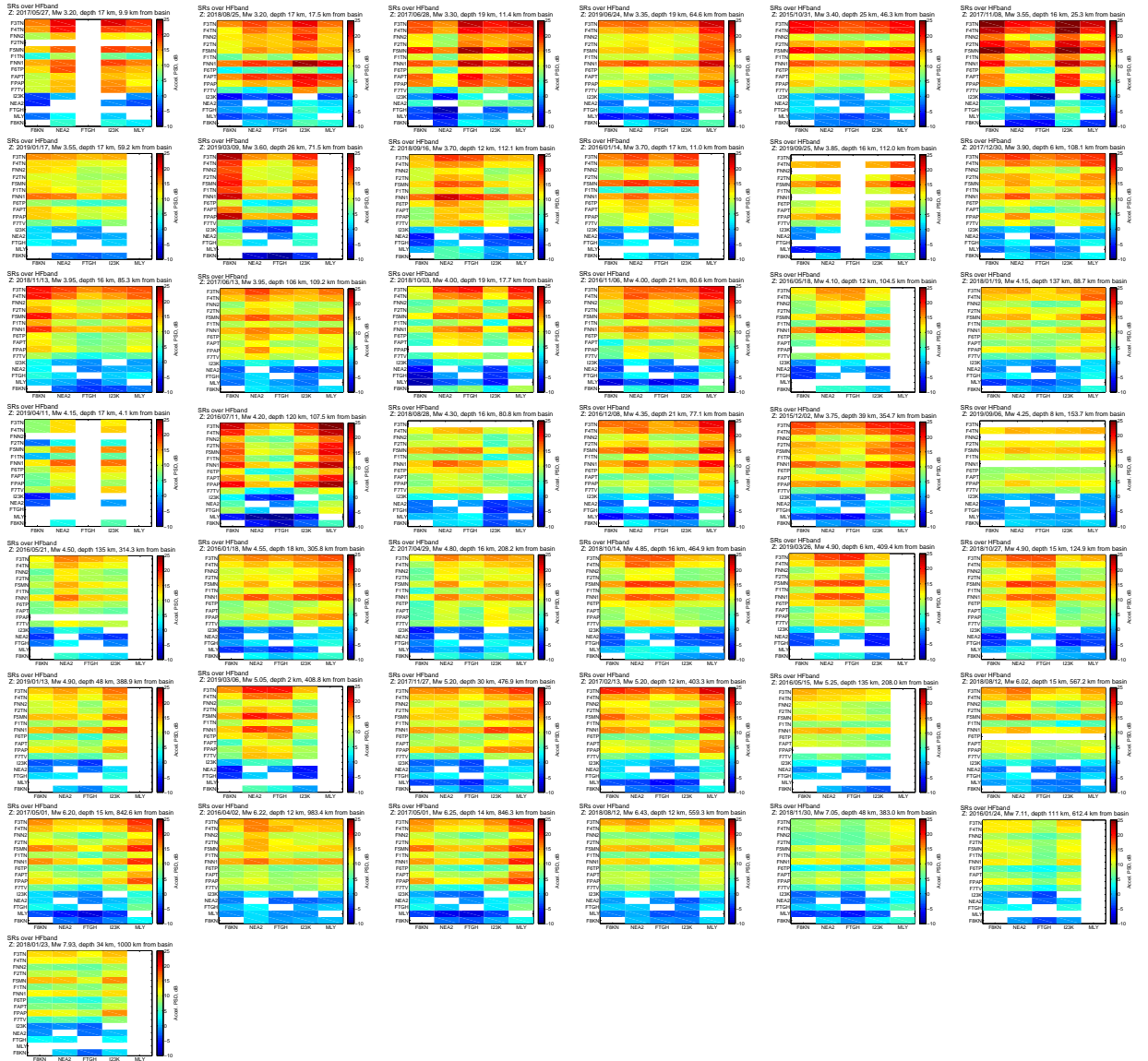


Figure SR12: **Z**: HFband. Events sorted by Table 1 of *Smith and Tape (2020)*.

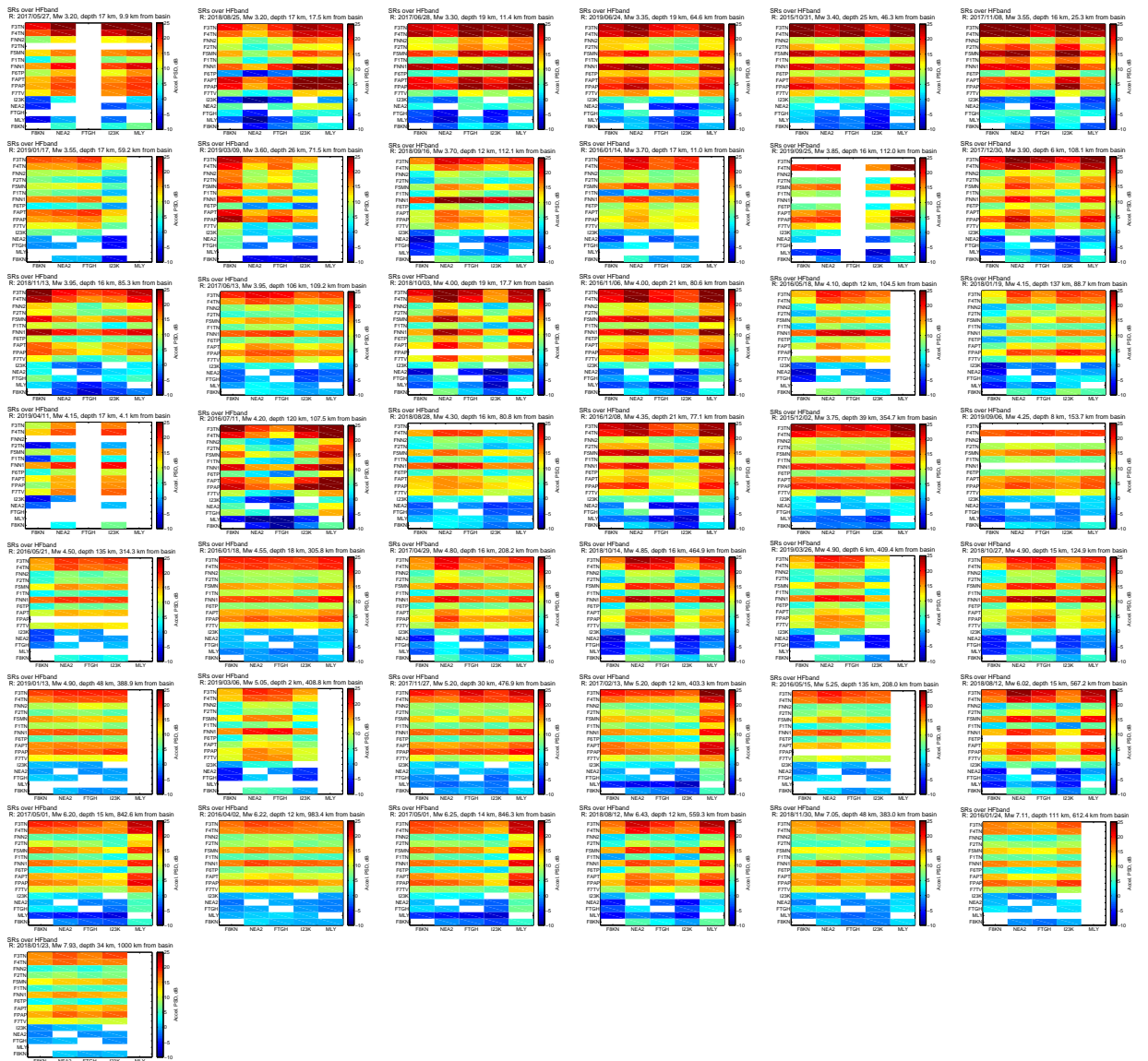


Figure SR13: R: HFband. Events sorted by Table 1 of *Smith and Tape (2020)*.

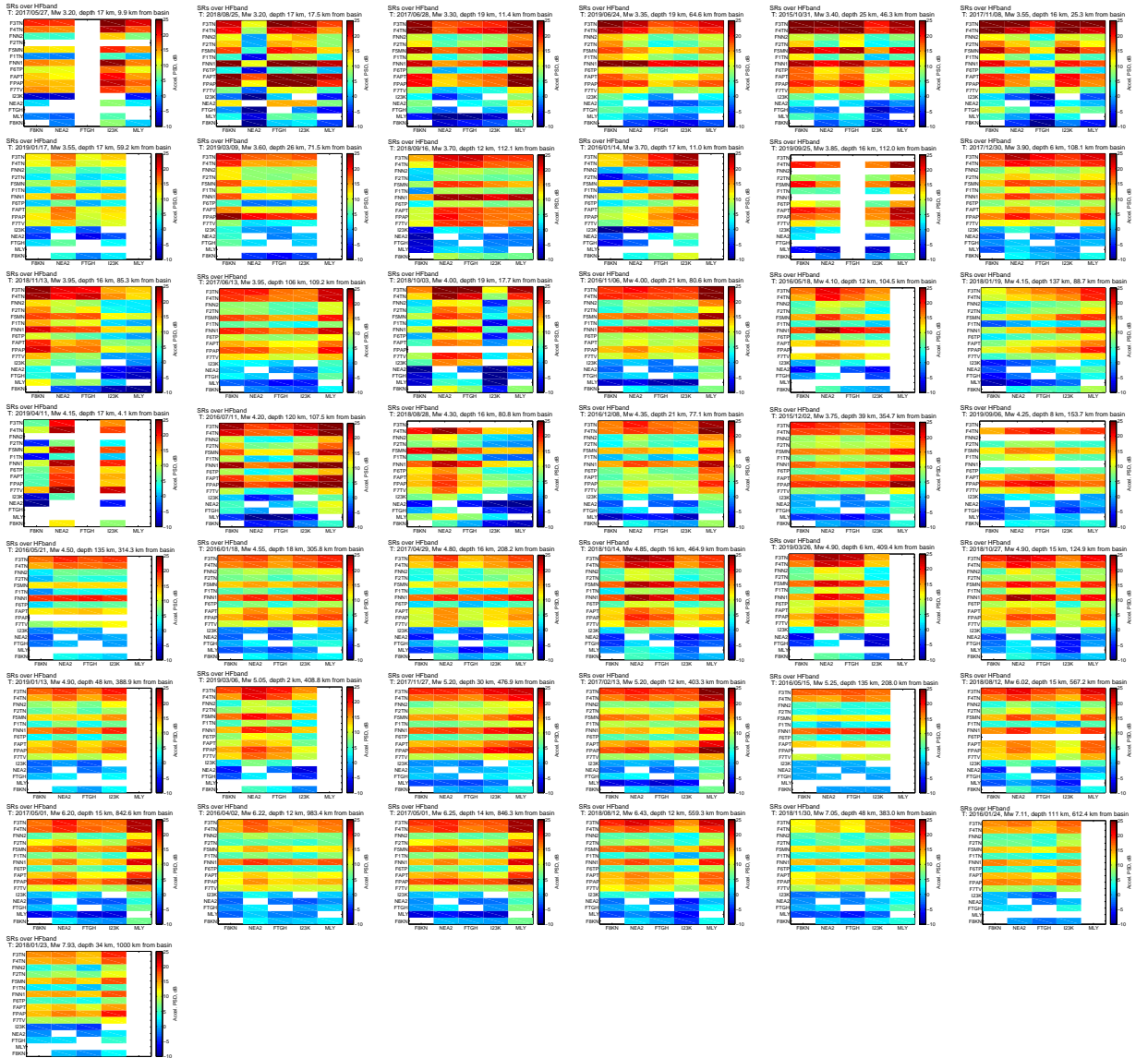


Figure SR14: T: HFband. Events sorted by Table 1 of *Smith and Tape (2020)*.

References

Smith, K., and C. Tape (2020), Seismic response of Nenana sedimentary basin, central Alaska, *Bull. Seismol. Soc. Am.* (in prep.).