

Supporting Information for Spectral Ratios

# **Seismic response of Nenana sedimentary basin, central Alaska**

Kyle Smith and Carl Tape

April 16, 2020

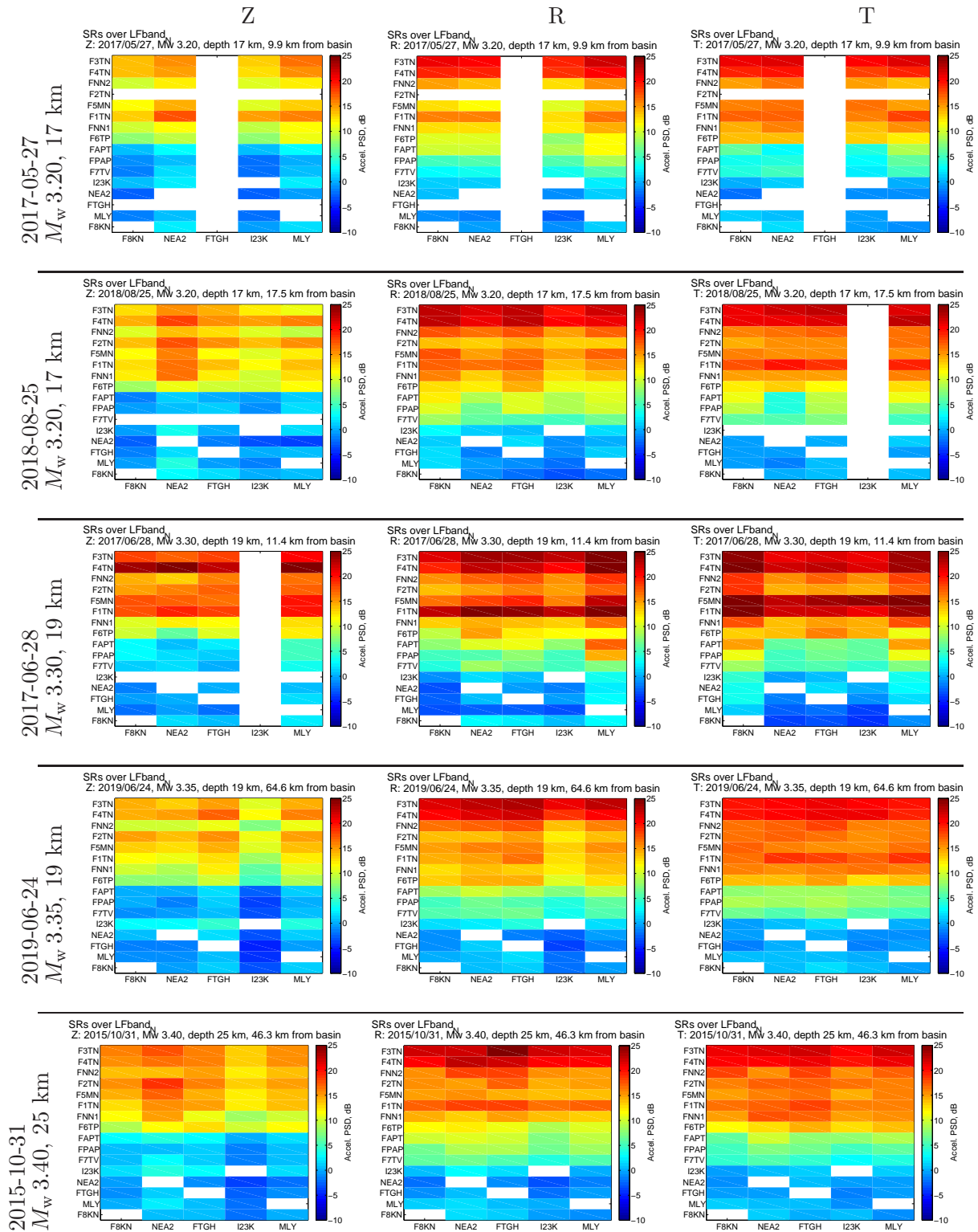


Figure SR1: **Pre-EQ Noise LFband:** Local and regional spectral ratios sorted by increasing magnitude. The vertical axis is sorted by descending SR's reference station F8KN in the transverse component from Figure 5 of *Smith and Tape* (2020). The horizontal axis is sorted by median distance to all local events.

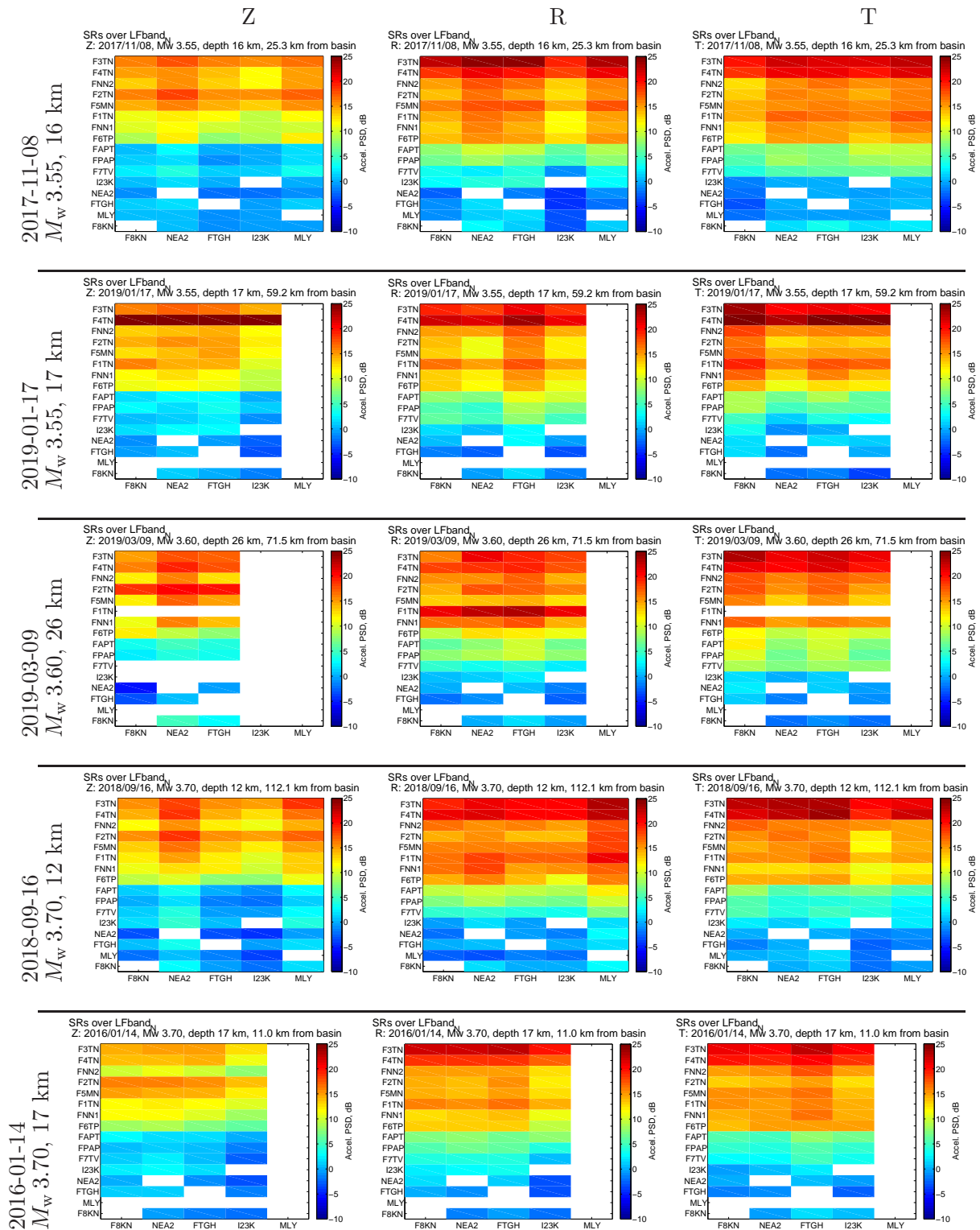


Figure SR2: **Pre-EQ Noise LFband:** Local and regional spectral ratios sorted by increasing magnitude. The vertical axis is sorted by descending SR's reference station F8KN in the transverse component from Figure 5 of *Smith and Tape* (2020). The horizontal axis is sorted by median distance to all local events.

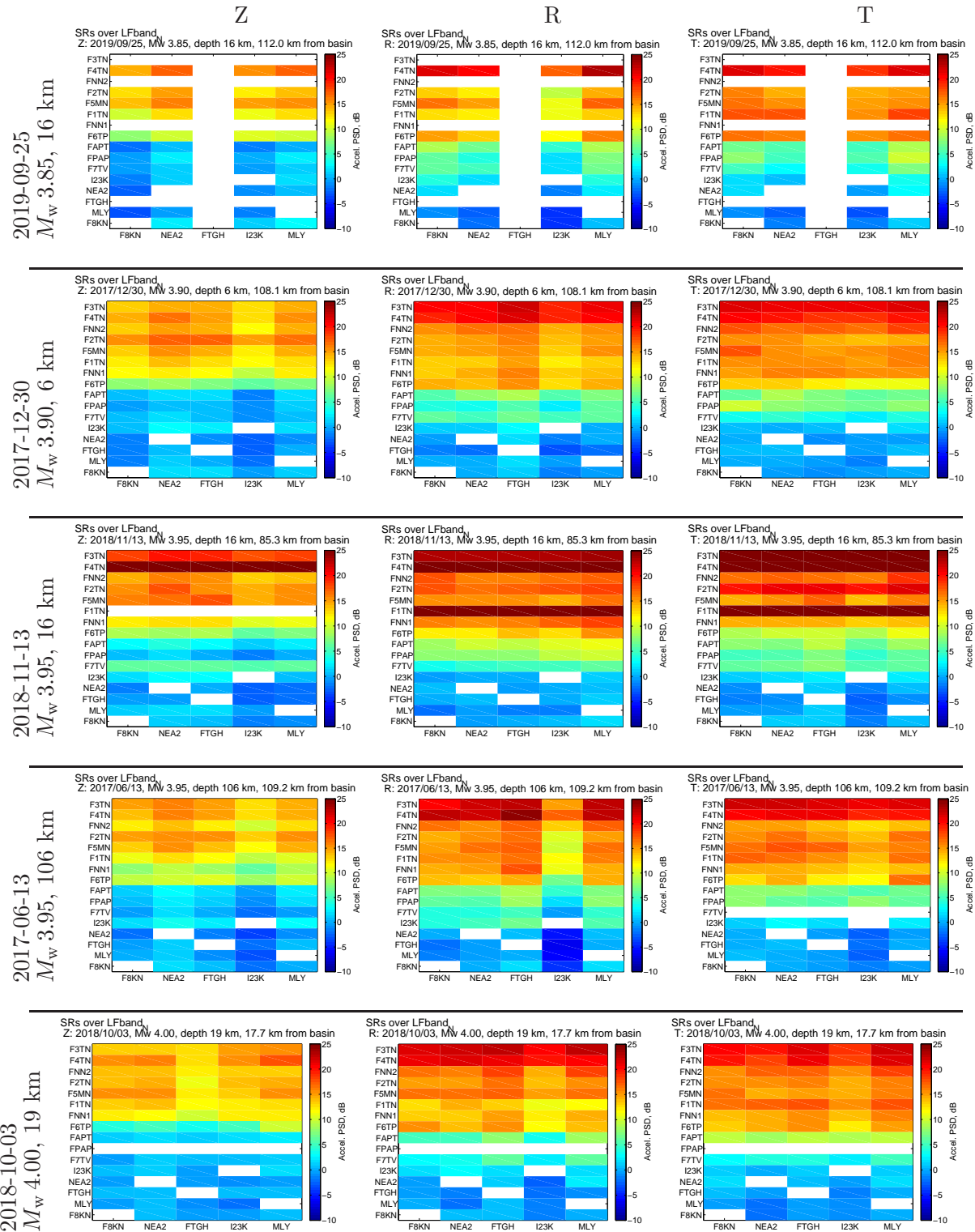


Figure SR3: **Pre-EQ Noise LFband:** Local and regional spectral ratios sorted by increasing magnitude. The vertical axis is sorted by descending SR's reference station F8KN in the transverse component from Figure 5 of *Smith and Tape* (2020). The horizontal axis is sorted by median distance to all local events.

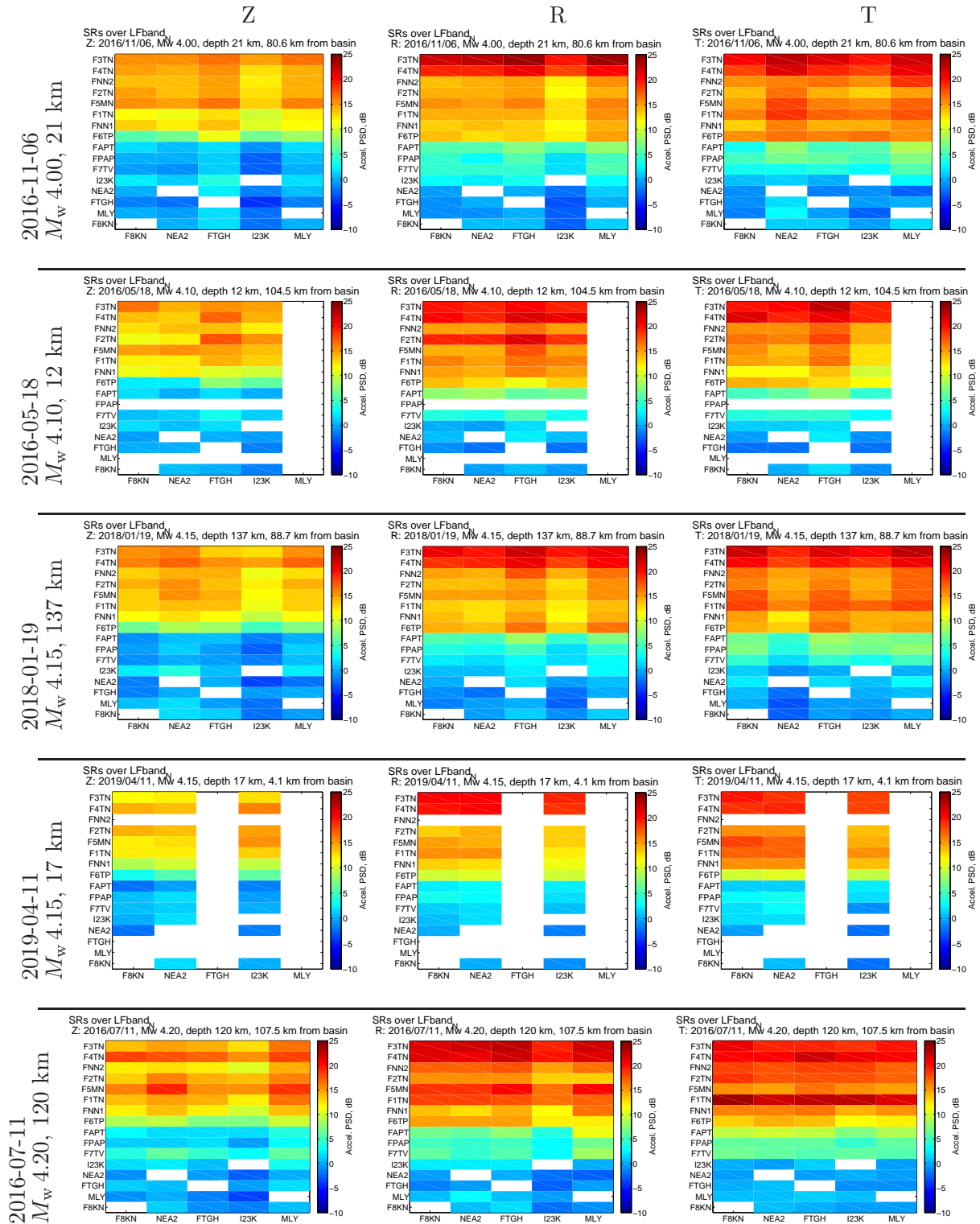


Figure SR4: **Pre-EQ Noise LFband**: Local and regional spectral ratios sorted by increasing magnitude. The vertical axis is sorted by descending SR's reference station F8KN in the transverse component from Figure 5 of *Smith and Tape* (2020). The horizontal axis is sorted by median distance to all local events.

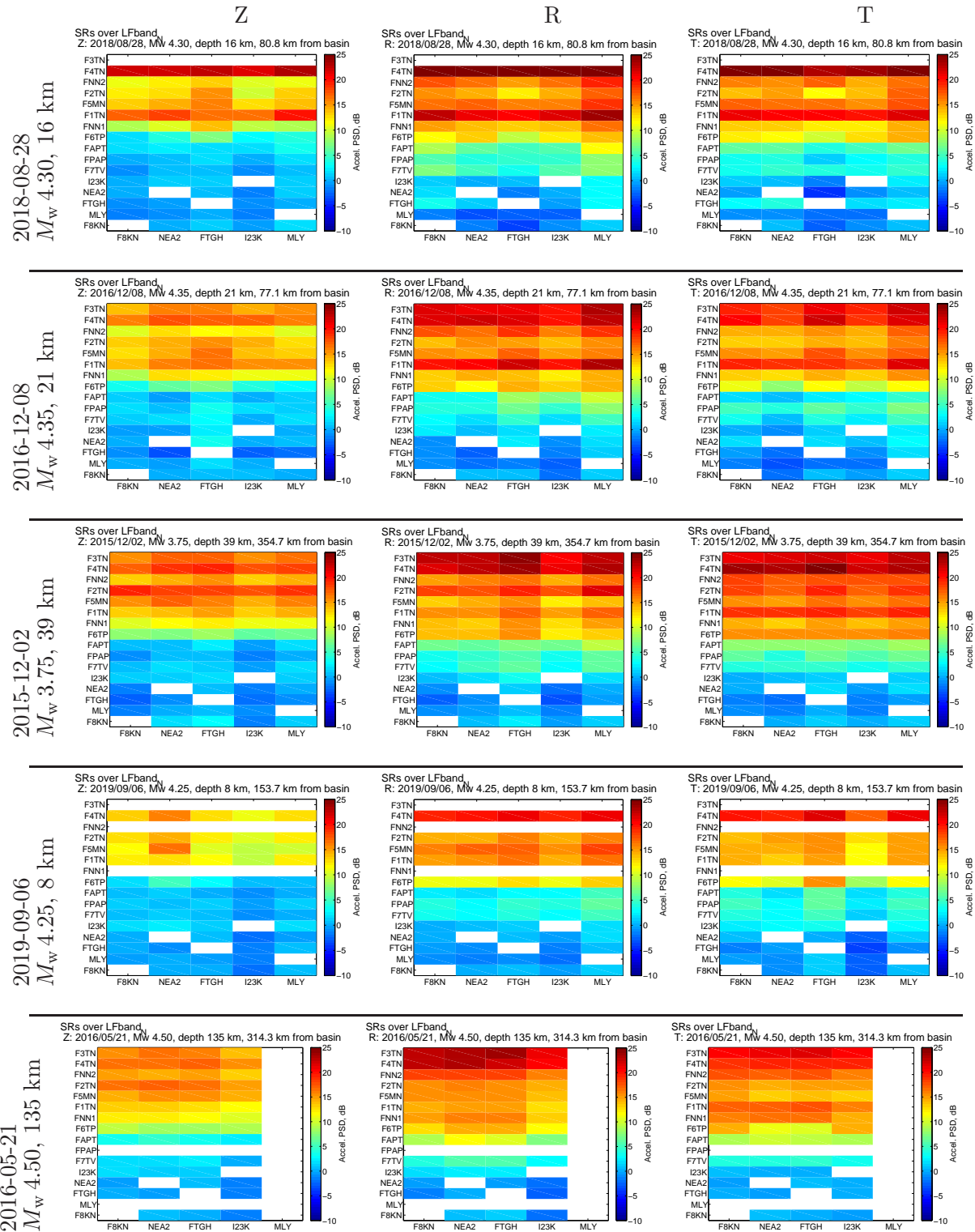
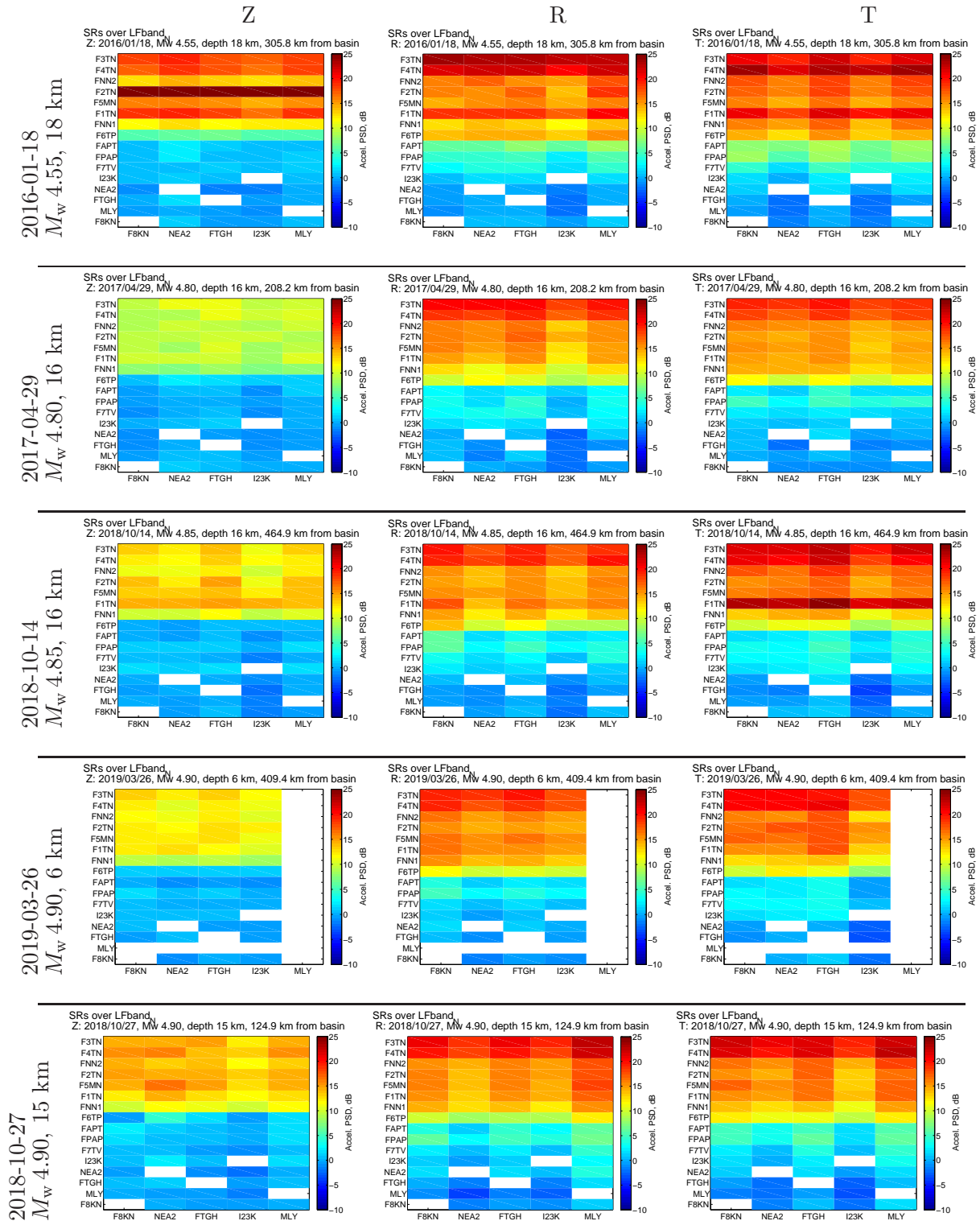


Figure SR5: **Pre-EQ Noise LFband**: Local and regional spectral ratios sorted by increasing **magnitude**. The vertical axis is sorted by descending SR's reference station F8KN in the transverse component from Figure 5 of *Smith and Tape (2020)*. The horizontal axis is sorted by median distance to all local events.



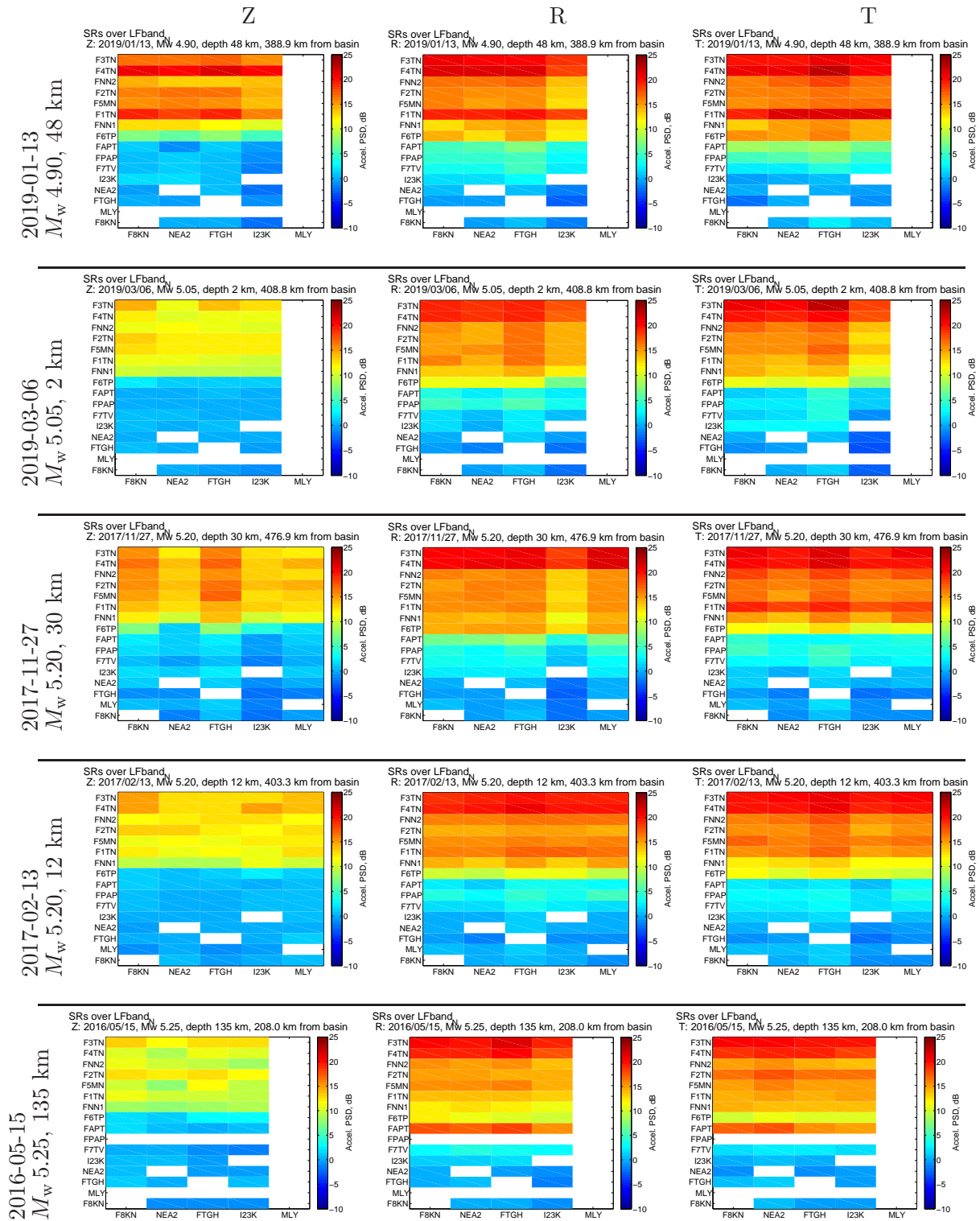


Figure SR7: **Pre-EQ Noise LFband**: Local and regional spectral ratios sorted by increasing **magnitude**. The vertical axis is sorted by descending SR's reference station F8KN in the transverse component from Figure 5 of *Smith and Tape* (2020). The horizontal axis is sorted by median distance to all local events.



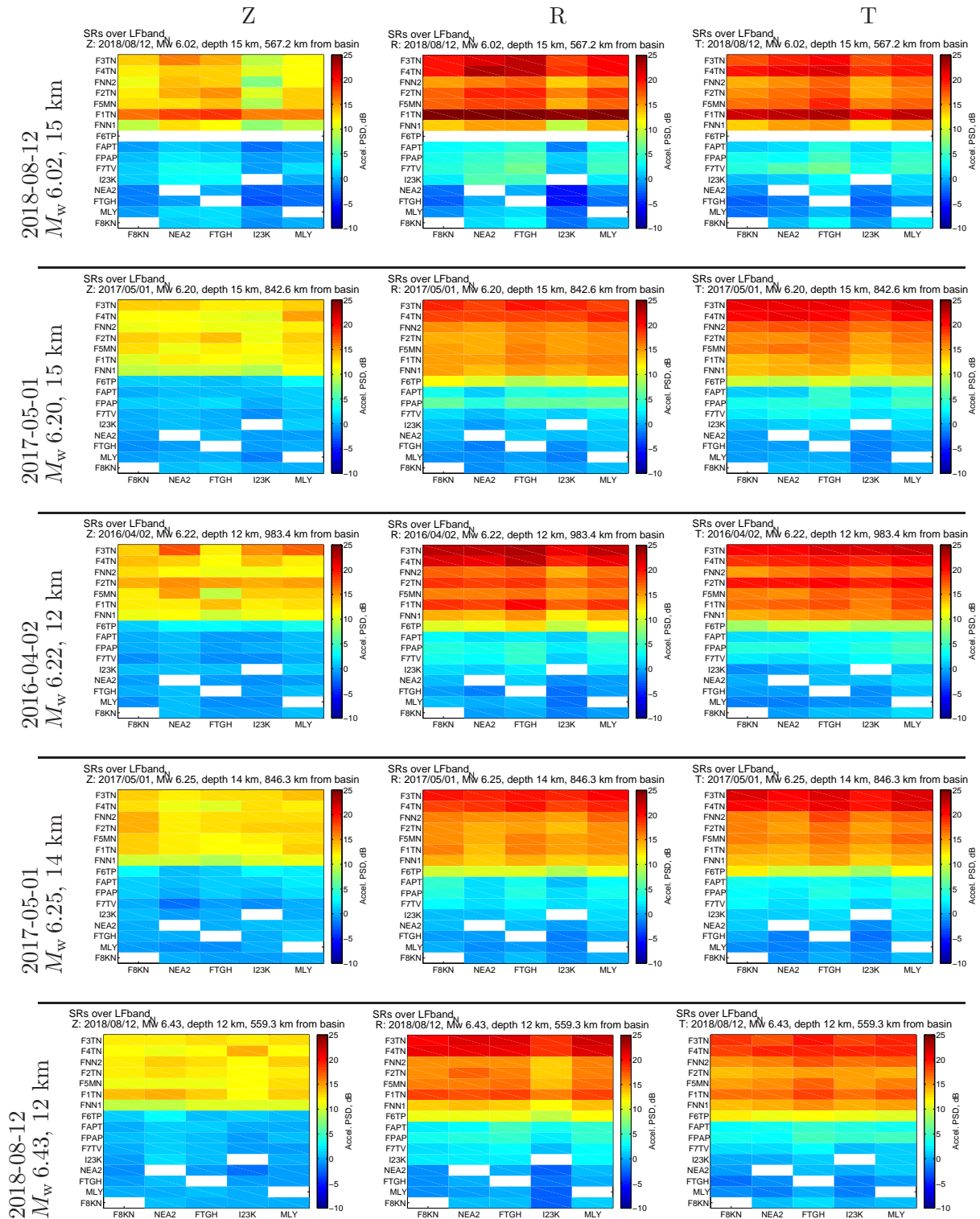


Figure SR8: **Pre-EQ Noise LFband**: Local and regional spectral ratios sorted by increasing **magnitude**. The vertical axis is sorted by descending SR's reference station F8KN in the transverse component from Figure 5 of *Smith and Tape* (2020). The horizontal axis is sorted by median distance to all local events.

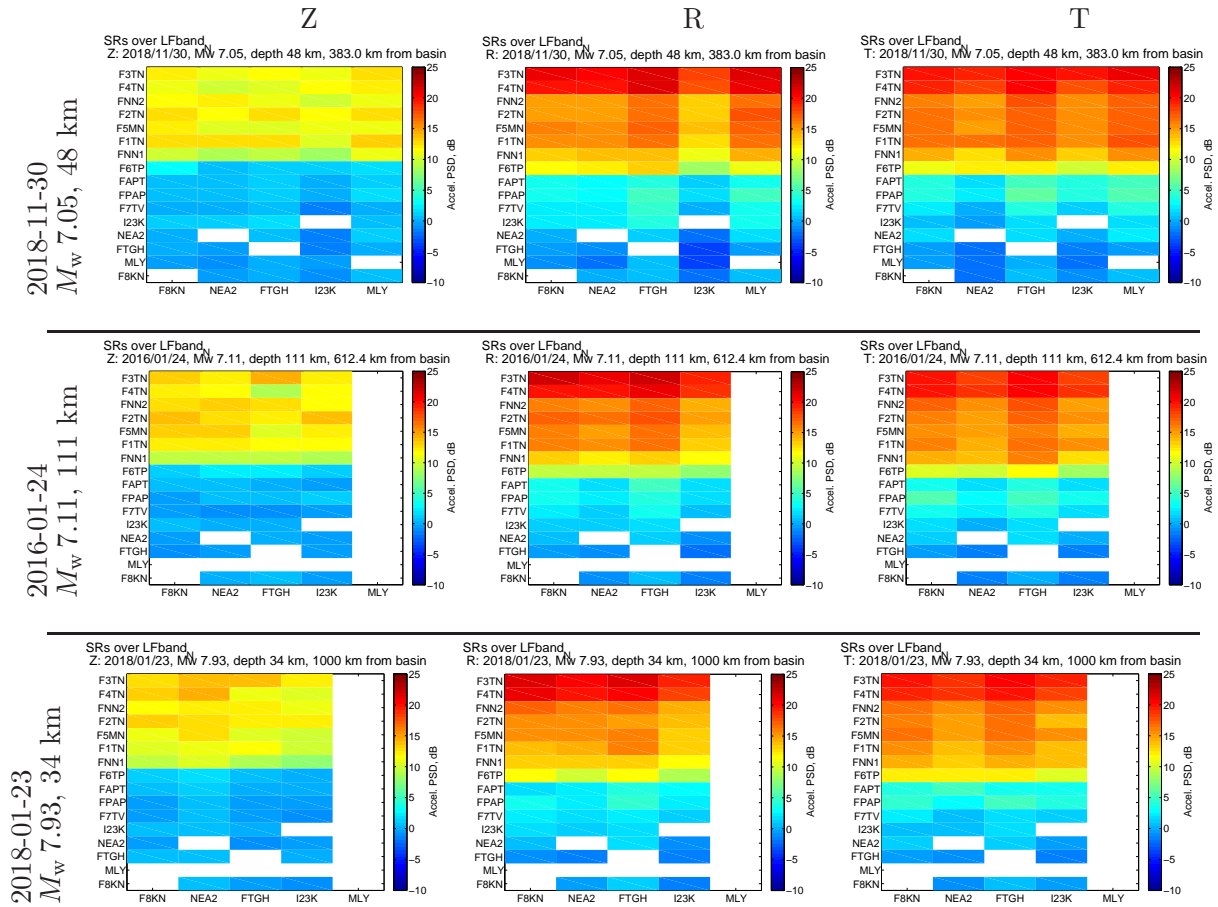


Figure SR9: **Pre-EQ Noise LFband:** Local and regional spectral ratios sorted by increasing magnitude. The vertical axis is sorted by descending SR's reference station F8KN in the transverse component from Figure 5 of *Smith and Tape (2020)*. The horizontal axis is sorted by median distance to all local events.

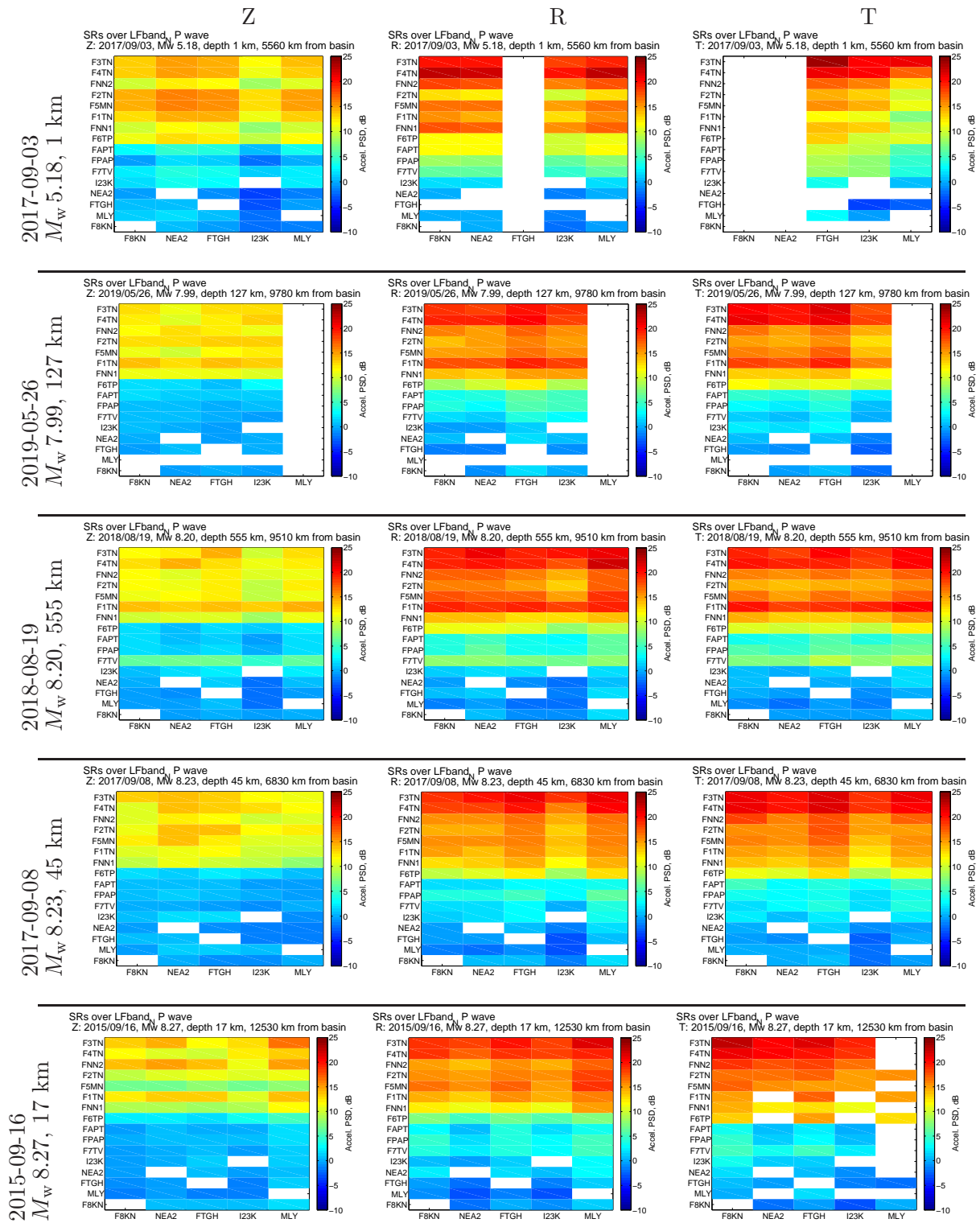


Figure SR10: **Pre-EQ Noise LFband: Teleseismic P** wave spectral ratios sorted by increasing **magnitude**. The vertical axis is sorted by descending SR's reference station F8KN in the transverse component in Figure 5. The horizontal axis is sorted by median distance to all local events.

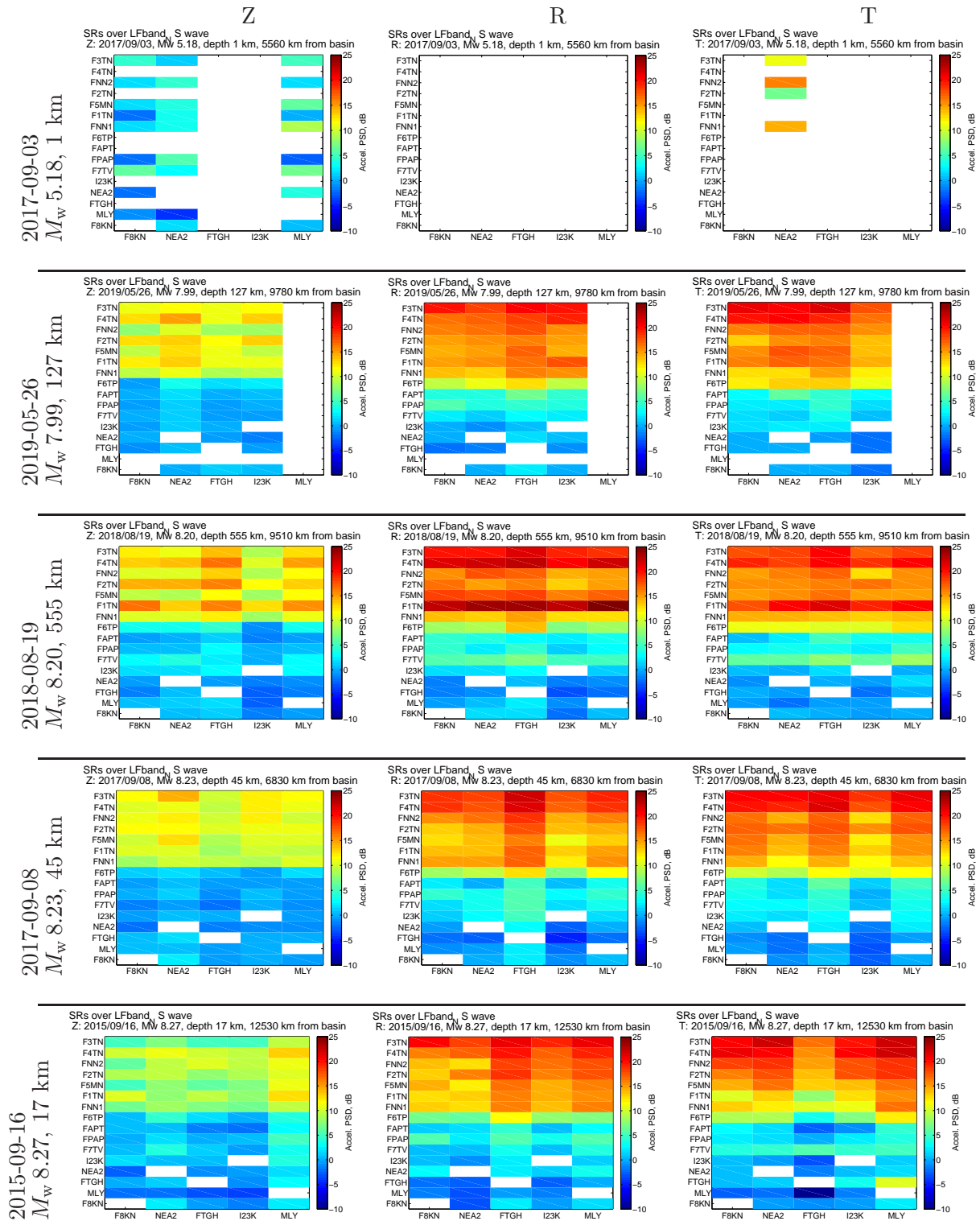


Figure SR11: **Pre-EQ Noise LFband: Teleseismic S wave spectral ratios sorted by increasing magnitude.** The vertical axis is sorted by descending SR's reference station F8KN in the transverse component in Figure 5. The horizontal axis is sorted by median distance to all local events.

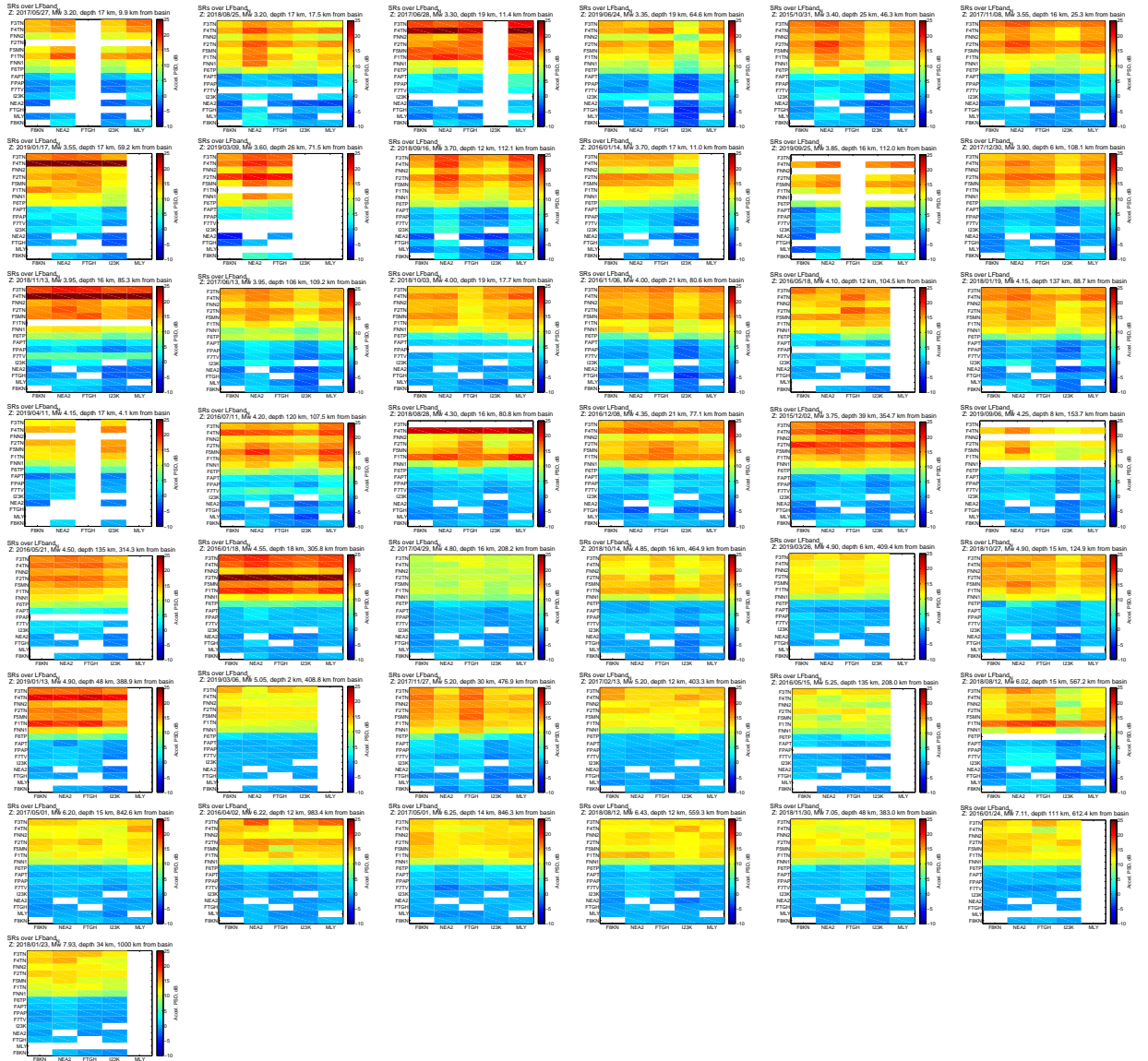


Figure SR12: Z: Pre-EQ Noise Lfband. Events sorted by Table 1 of *Smith and Tape (2020)*.

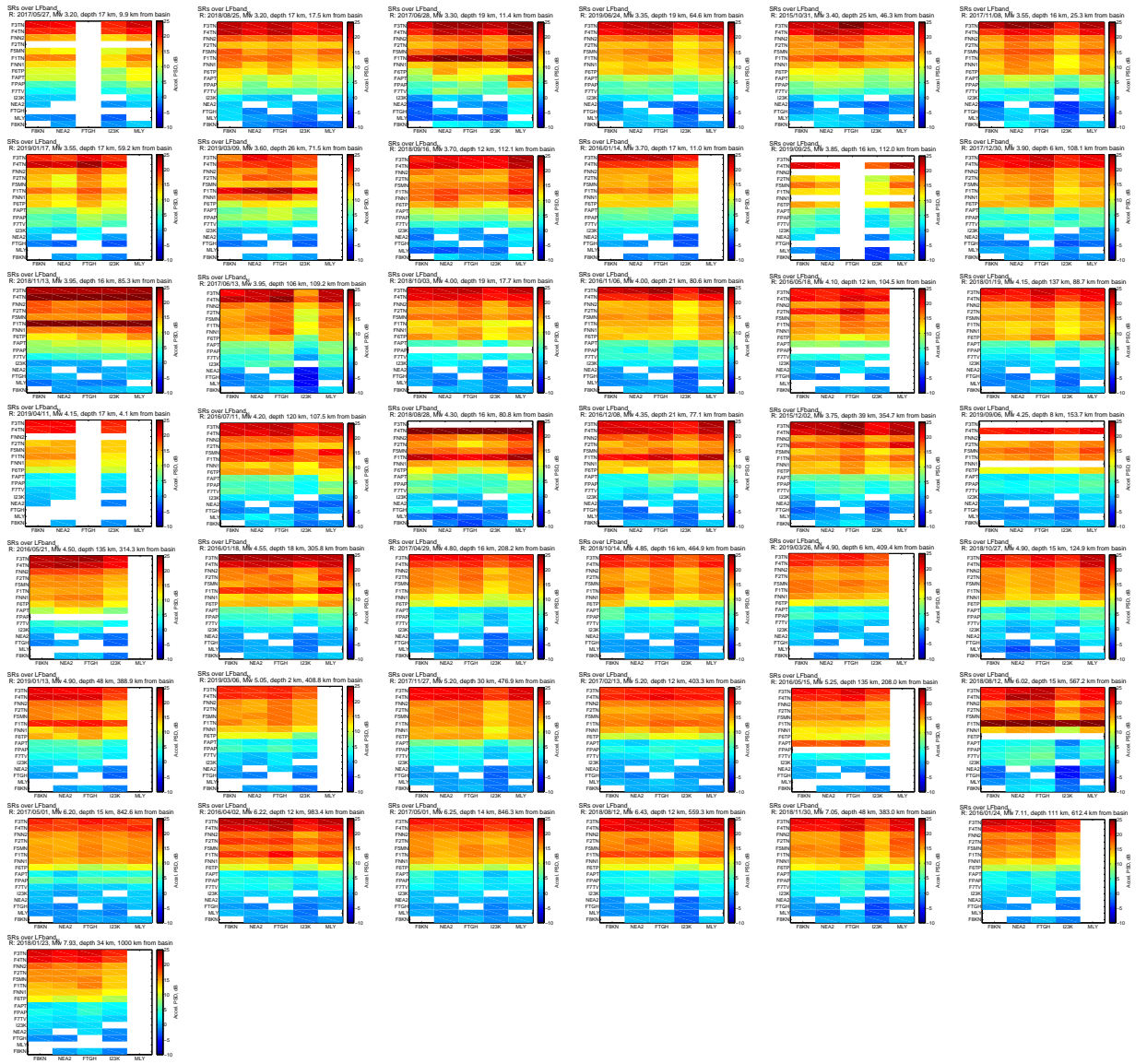


Figure SR13: R: Pre-EQ Noise LFband. Events sorted by Table 1 of *Smith and Tape (2020)*.

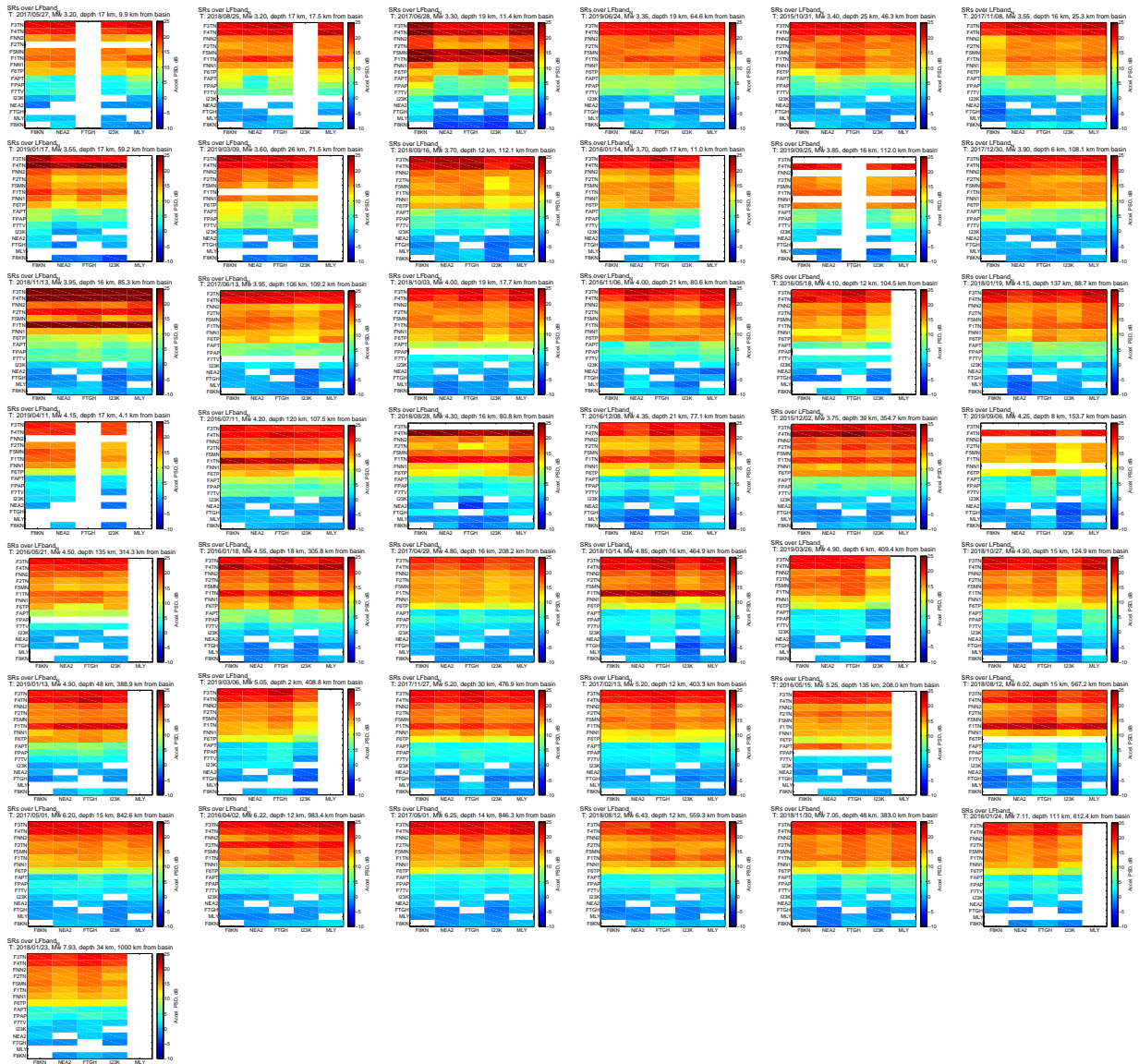


Figure SR14: T: Pre-EQ Noise LFband. Events sorted by Table 1 of *Smith and Tape (2020)*.

## References

Smith, K., and C. Tape (2020), Seismic response of Nenana sedimentary basin, central Alaska, *Bull. Seismol. Soc. Am.* (in prep.).