

PROGRESS REPORT:
ALASKA PLEA BARGAINING/
PRESUMPTIVE SENTENCING STUDY

Prepared For:
The Alaska Judicial Council

by

Jack Kruse
Professor of Public Policy
Institute of Social and Economic Research

Institute of Social and Economic Research
University of Alaska, Anchorage
June 15, 1989

PROGRESS REPORT:
ALASKA PLEA BARGAINING/
PRESUMPTIVE SENTENCING STUDY

The Promis raw data extract we received from the Department of Law consisted of 18,695 cases consisting of one or more felony charges received by the Department of Law between January 1, 1984 and December 31, 1989. I restricted the analysis file to cases meeting the following criteria:

- (1). Cases received before 1988 since the subset of 1988 cases that are closed cannot be assumed to be representative of all cases.
- (2). Cases that are either closed or on appeal.
- (3). Cases that fall within the general offense categories of murder/kidnapping, violent, property, drugs, sexual offenses, or "other" (including perjury, driving offenses, bribery, escape, promoting contraband, and misc. weapons charges)
- (4). Cases not solely involving probation revocation.
- (5). Cases in which the most serious arrest charge is at least a class "55" (offenses treated either as felonies or misdemeanors).

After applying the above criteria we are left with 14,080 cases. Each case consists of histories of up to seven separate charges, defendant characteristics, case characteristics, and the characteristics of the most serious arrest charge and the most serious convicted charge (both of the latter selected by us from the seven coded charges).

Most Serious Arrest Charge

The most serious arrest charge is selected from up to seven charges on the basis of being the charge with the highest offense class. There are eight offense classes:

55	Felony or misdemeanor
60	Felony- unspecified
65	Class C Felony
70	Class B Felony
75	Class A Felony
80	Uncl. Felony/0-30
90	Uncl. Felony/5-99
95	Uncl. Felony/20-99

All characteristics of the charge selected as the most serious arrest charge were assigned as characteristics of that charge. I anticipate that most of our analysis will focus on the most serious arrest charge.

Most Serious Convicted Charge

The charge associated with the largest active sentence (i.e. total sentence minus suspended sentence) is the most serious convicted charge. Again, all characteristics of the selected charge are assigned to this computed charge.

Dependent Variables Associated with PROMIS File

In preparation for the analysis, I have computed the following dependent variables and attached them to the PROMIS file (the percents shown pertain to the 14,080 cases in the PROMIS file):

<u>Variable Name/ Percent</u>	<u>Label and Possible Values</u>
CASESUM	<u>Case history summary for most serious arrest charge</u>
23%	1 Def. arrested, charged, and convicted on same offense. ["Acptd * Conv. as Charged"]
11%	2 Def. arrested and charged on same offense, but convicted on lesser offense. ["Chg. Stands, Conv. Lssr. Chg."]
2%	3 Def. arrested and charged on same offense, but entered plea as part of charge, sentence, or other bargain. ["Chge. Stands, Bargain"]
.2%	4 Def. arrested and charged on same offense, was found not guilty of most serious charge, but was convicted on one or more other charges. ["Chg. Stands, Not Guilty Main Chg., Guilty 1+ Other Chgs."]
1%	5 Def. arrested and charged on same offense, was found not guilty of most serious charge, and was not convicted on any other charges. ["Chg. Stands, not Guilty Main Chg., Not Guilty Any Other Chgs."]
4%	6 Def. arrested and charged on same offense; charge was later dismissed by prosecutor, but def. was convicted on one or more other charges. ["Chg. Stands, Dism. by Pros. Guilty 1+ Other Chgs."],
12%	7 Def. arrested and charged on same offense; charge was later dismissed by prosecutor, Def. was not convicted on any other charges. ["Chg. Stands, Dism. by Pros., Not Guilty Any Other Chgs."]

Variable Name/ Percent		Label and Possible Values
3%	8	Def. arrested and charged on same offense, charge later dismissed by court or failed to obtain an indictment. ["Chg. Stands, Other Outcome"]
6%	9	Charge filed reduced from arrest charge; convicted as filed. ["chg.Red, Convicted of Chg."]
1%	10	Charge filed reduced from arrest charge; convicted of further reduced charge. ["Chg.Red, Convicted of Lesser Chg."]
.1%	11	Charge filed reduced from arrest charge; later entered plea as part of a charge, sentence, or other bargain. ["Chg. Red, Bargain"]
.001%	12	Charge filed reduced from arrest charge; found not guilty on most serious charge, but convicted on one or more other charges. ["Chg. Red, Not Guilty, Convicted 1+ Chgs."]
.2%	13	Charge filed reduced from arrest charge; found not guilty on most serious charge and all other charges. ["Chg. Red, Not Guilty, Not Convicted on Any Chgs."]
.4%	14	Charged filed reduced from arrest charge; case later dismissed by prosecutor, but def. convicted on one or more other charges. ["Chg. Red, Dism. by Pros., Guilty 1+ Other Chgs."]
3%	15	Charge filed reduced from arrest charge; case later dismissed by prosecutor and def. was not convicted on any other charges. ["Chg. Red, Dism. by Pros., Not Guilty Any Other Chgs."]
1%	16	Charge filed reduced from arrest charge; case subsequently dismissed by court or no indictment returned. ["Chg. Red., Other Outcome"]
2%	17	No complaint filed, def. convicted on one more other charges. ["Charge Declined, Guilty 1+ Other Chgs."]
32%	18	No complaint filed, def. not convicted on any other charges. ["Charge Declined, Not Guilty Any Other Chgs."]

<u>Variable Name/ Percent</u>	<u>Label and Possible Values</u>
ARCONVR	<u>Arrest Conviction Rate</u>
42%	1 Sentenced with prison time, fine, probation (any of sentences may be suspended, all or in part).
58%	0 Arrested, not sentenced.
FLCONVR	<u>Filed Conviction Rate</u>
62%	1 Sentenced with prison time, fine, probation (any of sentences may be suspended, all or in part).
38%	0 Charges filed, not sentenced.
FLTRIALR	<u>Filed Trial Rate</u>
9%	1 Case went to trial (judge or jury).
91%	0 Charges filed, case did not go to trial.
TRCONVR	<u>Trial Conviction Rate</u>
72%	1 Sentenced with prison time, fine, probation (any of sentences may be suspended, all or in part).
28%	0 Case went to trial, no sentence received.
CONVAPR	<u>Active prison sentence (time to serve)</u>
66%	1 Sentenced with time to serve.
34%	0 Convicted, no time to serve.
ARRSENT	<u>Term of active prison sentence</u> (Convicted on most serious arrest charge)
SCREEN	<u>Screening summary</u>
55%	1 Charge accepted as referred.
11%	2 Reduced charge accepted.
34%	3 Prosecution declined (court action may or may not be necessary).

<u>Variable Name/ Percent</u>	<u>Label and Possible Values</u>
DISPOS	<u>Final disposition summary for cases accepted for prosecution (most serious arrest charge)</u>
44%	1 Convicted as charged on arrest.
16%	2 Convicted on lesser charge.
3%	3 Convicted with charge, sentence, or other bargain.
4%	4 Not guilty.
29%	5 Prosecutor dismissed charge.
6%	6 Dismissed by court, no indictment, other.
TRIALTYP	<u>Method by which final disposition determined (for those convicted on charge stemming from most serious arrest charge)</u>
13%	1 Jury trial
1%	2 Court trial
87%	3 Plea, nolo
ARRDSUM	<u>Case summary for most serious arrest charge</u>
34%	1 No complaint filed
21%	2 Prosecutor dismissed case
20%	5 Pled to arrest charge
19%	4 Pled to lesser charge
5%	7 Convicted in trial
2%	8 Acquitted, not guilty in trial
ARRCSUM	<u>Case summary for most serious arrest charge</u>
55%	1 No complaint filed or prosecutor dismissed case
39%	2 Pled
5%	3 Convicted
1%	4 Acquitted, other

Variable Name/ Percent	Label and Possible Values	
ARRFDISP	<u>Promis variable: final disposition for charge selected as most serious arrest charge</u>	
5%	401	Jury trial, guilty as charged
.1%	402	Jury trial, guilty as amended
1%	403	Jury trial, guilty of lesser offense including elements of initial charge
.4%	406	Court trial, guilty as charged
0%	407	Court trial, guilty as amended
.1%	408	Court trial, guilty of lesser offense including elements of initial charge
1.7%	411	Jury trial, not guilty
.2%	412	Jury trial, acquitted
.1%	413	Court trial, not guilty
0%	417	Court trial, not guilty due to insanity
1.2%	421	No true bill
.1%	422	Not held to answer
1.3%	440	Completed
3.1%	451	Pled as charged
2.2%	452	Pled to amended charge
.2%	455	Plea, charge bargain
.1%	456	Plea, sentence bargain
.1%	457	Plea, charge and sentence bargain
0%	459	Plea, other bargain
35%	461	Nolo, plea as charged
13.2%	462	Nolo, plea to amended charge
1%	465	Nolo, charge bargain
.7%	466	Nolo, sentence bargain
.3%	467	Nolo, charge and sentence bargain
.1%	469	Nolo, other bargain
29.2%	471	Dismissed by prosecutor
2.4%	475	Dismissed by court
0%	479	Transferred to another agency
.8%	480	Transferred to another office
.3%	490	Probation SIS revocation
ARRDSP	<u>Promis variable: screening disposition of charge selected as most serious arrest charge</u>	
53.8%	390	Charge accepted as referred
.6%	391	Charge accepted in same class
1%	392	Higher charge accepted
2.5%	393	Lower felony charge accepted
8.2%	394	Misdemeanor charge accepted
0%	395	Lesser misd. accepted
3%	398	Prosecution declined, dismissal required
30.8%	399	Prosecution declined, no dismissal required

Variable Name/ Percent	Label and Possible Values	
ARRAMD	<u>Reason for amending most serious arrest charge at time of screening</u>	
16%	226	Insufficient evidence or other essential element
10%	229	Inadequate corroboration
9%	257	Other charge more accurate
6%	289	Other discretionary reasons
6%	220	Insufficient evidence of intent
5%	259	Other evidentiary reasons
3%	227	Inadequate identification
3%	203	Essential witness not credible
3%	201	Victim declined to prosecute
3%	265	Civil matter
3%	249	Affirmative defense available
3%	225	Insufficient evidence of proof of value
2%	300	Disproportionate to resources
1%	288	Interest of justice
2%	260	Required investigation not completed
2%	204	Essential witness uncooperative
2%	209	Other witness problem
2%	221	Insufficient evidence- knowledge
2%	280	Def convicted in a different case
1%	222	Insufficient evidence- recklessness
1%	294	Pre-charge delay problems
1%	269	Stale case- defendant missing
1%	206	Essential witness unavailable
1%	240	Inadmissible search and seizure
1%	299	Other misc. reasons
1%	202	Can't locate witness
1%	278	Charges consolidated
1%	292	Referred to juvenile authority
1%	207	Essential witness unfit
1%	281	Pled to essence of the offense
1%	279	Defendant in another case
1%	283	Probation, parole revoked
1%	232	Unavailable physical evidence
1%	250	Exculpatory physical evidence discovered
5%		Other reasons, each of which accounts for less than .5% of all reasons given.

Variable Name/ Percent	Label and Possible Values	
---------------------------	---------------------------	--

CONFCHG Most Serious Convicted Charge
(Charges involving at least 40 cases)

11%	41.230	Assault- 4th
7%	41.220	Assault- 3rd
6%	46.310	Burglary- 2nd
5%	71.030	Drugs- 3rd
5%	41.436	Sexual abuse of a minor
5%	46.130	Theft- 2nd
5%	46.300	Burglary- 1st
4%	46.140	Theft- 3rd
3%	46.484	Criminal mischief- 3rd
3%	46.505	Forgery- 2nd
3%	46.320	Criminal Trespass- 1st
3%	71.040	Drugs- 4th
2%	41.210	Assault- 2nd
2%	41.434	Sexual abuse- 1st
2%	41.500	Robbery- 1st
2%	28.35.03	Driving while intoxicated
2%	41.410	Sexual assault
2%	46.482	Criminal mischief- 2nd

ARRCHG Most serious arrest charge

5%	46.130	Theft- 2nd
7%	41.220	Assault- 3rd
6%	46.310	Burglary- 2nd
5%	46.300	Burglary- 1st
5%	71.030	Drugs- 3rd
3%	71.040	Drugs- 4th
2%	41.410	Sexual assault
5%	41.436	Sexual abuse of a minor
2%	46.482	Criminal mischief- 2nd
2%	41.434	Sexual abuse- 1st
2%	41.210	Assault- 2nd
3%	46.505	Forgery- 2nd
2%	41.500	Robbery- 1st
1%	41.200	Assault- 1st
1%	61.200	Misc involving a weapon- 1st
1%	41.420	Sexual assault- 2nd
1%	46.280	Issuing bad checks
1%	56.375	Promoting contraband- 1st
1%	41.300	Kidnapping
1%	41.510	Robbery- 2nd
1%	41.100	Murder- 1st
1%	46.120	Theft- 1st
1%	41.438	Sexual abuse of a minor- 3rd

Variable Name/ Percent	Label and Possible Values	
ARRFAMD	<u>Reason for amendment of final charge</u>	
14%	281	Pled to essence of offense
10%	285	Pretrial diversion completed
9%	289	Other discretionary reasons
7%	280	Defendant convicted in another case
6%	288	Interest of justice
4%	226	Insufficient evidence or other essential element
4%	257	Other charge more accurate
3%	278	Charges consolidated
3%	201	Victim declines prosecution
2%	209	Other witness problem
2%	269	Stale case- defendant missing
2%	259	Other evidentiary reasons
2%	206	Essential witness unavailable
2%	299	Other misc. reasons
2%	202	Can't locate witness
2%	220	Insufficient evidence of intent
2%	204	Essential witness uncooperative
2%	284	Restitution made or in progress
2%	203	Essential witness not credible
2%	229	Inadequate corroboration
1%	227	Inadequate identification
1%	295	4 month rule problem
1%	300	Disproportionate to resources
1%	249	Affirmative defense available
1%	275	To facilitate prosecution of another def.
1%	240	Inadmissible search and seizure
1%	250	Exculpatory evidence discovered
1%	286	Deferred prosecution completed
1%	225	Insufficient evidence of proof of value
1%	283	Probation, parole revocation
1%	219	Other court action
1%	207	Essential witness unfit
1%	221	Insufficient evidence- knowledge
5%		Other reasons, each less than 5% of all reasons given.

Independent Variables Associated with the PROMIS File

As you know, the PROMIS file itself contains little data on the characteristics of the defendant. Aside from individual identifiers, only the age of the defendant is present and reliable. Data from the Department of Corrections (OBSCIS) and Department of Public Safety (APSIN) will provide us with the following additional data on the characteristics of the defendant (for those cases we are able to match):

- o Sex
- o Race
- o Marital Status
- o Employment Status (weak variable)
- o Number of prior felony convictions
- o Number of prior misdemeanor convictions
- o Flag indicating some time spent in jail prior to sentencing

The PROMIS file contains data on the characteristics of the case. These variables include:

- o Judge at sentencing (or assigned to case)
- o Prosecutor at sentencing (or assigned to case)
- o Location of case
- o Type of trial, if applicable

PROMIS File Data Processing

Most of the PROMIS analysis variables required computation. In addition, it is possible to reduce the incidence of missing data by allocating values from other data fields. The computer code used to accomplish these tasks appears as Attachment 1 under the title "PROMIS3.SPC". The entire PROMIS file exists as an SPSSx file (PROMIS3.SPS).

The data dictionary describing the contents of the current PROMIS analysis file appears as Attachment 2 under the title "UNIV89.AJC".

Progress on Matching PROMIS, OBSCIS, and APSIN Files

The computer files maintained by the Departments of Law, Corrections, and Public Safety are not designed with common match keys. However, each file shares some individual identifiers with one or more of the other files. These shared identifiers are not necessarily required fields, nor are the field entries always correct.

The Department of Corrections provided us with a tape file containing the names, birth date, social security number (partial data), and FBI number (partial data) for all persons ever booked (53,213 records).

They also attached their own key identifier, an OBSCIS code. I performed a series of matches, first with the APSIN file (described below), and then with the PROMIS file. In each match sequence, the first match required simultaneous matches on several identifiers (e.g. social security number, last name, first name, defendant year born). Later matches used fewer variables; however, I checked matched cases on other variables (e.g. first name). Research assistants attempted to perform a final match by comparing computer printouts of files sorted by name and date of birth.

We were successful in matching 13,520 of our 18,695 PROMIS records with the OBSCIS data base (72 percent). Since not all defendants appearing in the PROMIS database are booked, it is not possible to establish a firm match standard. Based on conversations with the Department of Corrections, however, I think we matched well over 80 percent of the PROMIS cases involving individuals who appear in the OBSCIS file.

I sent the Department of Corrections a disk containing the OBSCIS number and our own PROMIS file identifier (SORTNO). While they have encountered some problems in generating the data extract we want, they have apparently run a successful test and we just received the OBSCIS file. The file contains defendant characteristics including: sex, race, marital status, occupation (flaky), age, and total length of sentence associated with last case. Unfortunately, they were unable to provide a flag indicating jail time prior to sentencing. Since the file will contain our own case identifier, the final stage of concatenating the two files will be easy.

The Department of Public Safety met our initial request by providing a tape file containing individual identifiers sex, race, and up to 20 occurrences of prior convictions, listing offense code (UCR), conviction date, and disposition (i.e. nolo, plea, trial conv., SIS/DIS). Records included in this file extract had to meet an initial selection criterion of containing one or more felony arrests between January 1, 1984 and December 31, 1987 (i.e., the definition of our study population). Using the same match strategy described above, we first were successful in matching 92 percent of the APSIN records with OBSCIS records. Surprisingly, however, we were able to match only 42 percent of these matched records with the PROMIS file.

The Department of Public Safety agreed to try to obtain matches with a file extract containing the 10,458 PROMIS cases which did not match any records in the first APSIN file extract. They were successful in matching 96 percent of these cases. Thus, we were able to match 98 percent of all PROMIS records with the APSIN database. It is important to note, however, that the reason the initial APSIN file extract did not contain more records (and hence a higher successful match rate) is that a substantial number of felony convictions have not been recorded in APSIN. For us, this means that most of the APSIN record data on prior convictions will be incomplete at best and entirely missing at worst. It will thus be important to compare analysis results for PROMIS records initially matched with APSIN with analysis results for all PROMIS records.

I have not performed the final concatenation of APSIN and PROMIS records although this step itself is now a straightforward match of our own study identifier (SORTNO). Before doing so we will need to assign each APSIN offense code to an offense class code (i.e., felony or misdemeanor). I will then calculate the number of prior convictions and attach these variables to the master PROMIS database.

Sample of Felony Cases

As you know, the lack of defendant characteristics, case characteristics, and specifically charge reduction data in the computer databases made it necessary to select a sample of felony cases and to collect additional data from prosecutor and court files. I will not attempt to document this entire process now (you and Rosyland are certainly more knowledgeable about this phase of the project than I), but the advisory committee might benefit from a description of the sampling method employed and an opportunity to look at the training manual and data collection form we used.

We designed the sample so that we could report results separately for the major court locations (Anchorage, Fairbanks, Juneau, Barrow, Nome, Kotzebue, and Bethel) while still reporting results representative of the state as a whole. Furthermore, we designed the sample to optimize the reliability of charge reduction estimates by varying the probability of selection according to the observed rate of charge reduction by type of offense and location.

Tables S-1 through S-6 summarize the sample design. We made the principal locations self-representing. Table S-1 shows both the desired sample size and the sample actually achieved. Note that I deliberately oversampled Anchorage when I discovered that a quarter or more of all cases are screened out.

I used a disproportionate stratified design to select cases for each court location. I compared the offense class of the first and final charge for each record in the PROMIS file to calculate the proportion of charges reduced by location and type of offense. These proportions are shown in the third column of Tables S-2 through S-6. I then varied the probability of selection according to the standard deviation of the observed proportion of reduced charges. This technique is described in Leslie Kish's book Survey Sampling (John Wiley & Sons, 1965, Section 3.5, "Disproportionate Sampling or Optimal Allocation", see formulas 3.5.1 and 4.6.9).

The training manual appears as Attachment 3. The data collection form appears as pages 12-15. As you know, we exported data from the PROMIS file to the Q&A database before printing the forms for each sample case so that the coders could check the PROMIS data. Note also that we added disposition fields for each stage of the case as an additional page (this page is not included in the training manual and I can't put my hands on it immediately).

1989 ALASKA PLEA BARGAINING STUDY
 SAMPLE DESIGN
 TABLE S-1

I. STRATIFICATION BY LOCATION

SELF-REPRESENTING:	PERCENT OF TOTAL	INITIAL SAMPLE SIZE	FINAL SAMPLE SIZE
Anchorage	36	800	985
Fairbanks	16	400	381
Juneau	4	100	104
Bethel	6	100	104
Barrow	3	100	98
Nome/Kotzebue (50 each)	7	100	105
	----	----	----
Subtotal:	72	1,600	1,777
 REPRESENTATIVE SAMPLE:			
Rmdr. 3rd Jud. Dist.	9	50	53
Kenai 143			
Kodiak 99			
Palmer 227		(50)	(53)
Valdez 24			
Rmdr. 1st Jud. Dist.	19	60	60
Ketchikan 133			
Sitka 50		(60)	(56)
Petersburg 45			
	----	----	----
Subtotal:	28	110	113
 Total:	 100	 1,710	 1,890

Source: Alaska Judicial Council/ISER

1989 ALASKA PLEA BARGAINING STUDY
 SAMPLE DESIGN
 TABLE S-2

Anchorage (1986)

TYPE OF OFFENSE	NUMBER OF CASES IN 1986	PROP. OF TOTAL	PROP. OF CHGS REDUCED ALL AVAIL.		STANDARD DEVIATION	CONSTANT OF PROPORTIONALITY	CONSTANT OPTIMAL ALLOCATION		PROP. FOR DECLINED PROS. & DISMISSALS		n
			DATA	OF			SF	n	OR	SF	
Property	408	0.39	0.25	0.43	0.87	0.38	154	0.35	0.51	208	
Violent	270	0.26	0.44	0.50	0.87	0.43	117	0.43	0.62	167	
Drugs	163	0.16	0.20	0.40	0.87	0.35	57	0.30	0.45	74	
Sexual	99	0.09	0.18	0.38	0.87	0.34	33	0.37	0.46	45	
Other	91	0.09	0.21	0.41	0.87	0.36	32	0.28	0.45	41	
Murder	16	0.01	0.31	0.46	0.87	0.40	6	0.06	1.00	16	
	1047	1.00					400			552	

Anchorage (1987)

TYPE OF OFFENSE	NUMBER OF CASES IN 1987	PROP. OF TOTAL	PROP. OF CHGS REDUCED ALL AVAIL.		STANDARD DEVIATION	CONSTANT OF PROPORTIONALITY	CONSTANT OPTIMAL ALLOCATION		PROP. FOR DECLINED PROS. & DISMISSALS		n
			DATA	OF			SF	n	OR	SF	
Property	449	0.395594	0.25	0.43	0.81	0.35	157	0.35	0.47	211	
Violent	267	0.235242	0.44	0.50	0.81	0.40	107	0.43	0.57	153	
Drugs	168	0.148017	0.20	0.40	0.81	0.32	54	0.30	0.42	71	
Sexual	142	0.125110	0.18	0.39	0.81	0.31	44	0.37	0.43	61	
Other	82	0.072246	0.21	0.41	0.81	0.33	27	0.28	0.42	35	
Murder	27	0.023788	0.31	0.46	0.81	0.37	10	0.06	0.40	11	
	1135	1.00					400			542	

Source: Alaska Judicial Council/ISER

1989 ALASKA PLEA BARGAINING STUDY
SAMPLE DESIGN
TABLE S-3

Fairbanks (1986-87)

OFFENSE	NUMBER OF CASES IN 1986-87	PROP. OF TOTAL	PROP. OF CHGS REDUCED		CONSTANT OPTIMAL ALLOCATION		
			ALL AVAIL. DATA	STANDARD DEVIATION	PROPORTIONALITY	SF	n
Property	486	0.48	0.11	0.32	1.16	0.36	177
Violent	192	0.19	0.21	0.40	1.16	0.47	90
Drugs	112	0.11	0.15	0.36	1.16	0.41	46
Sexual	122	0.12	0.16	0.37	1.16	0.42	52
Other	89	0.09	0.06	0.24	1.16	0.28	25
Murder	21	0.02	0.22	0.41	1.16	0.48	10
	-----	----					-----
	1022	1.00					400

Juneau (1986-87)

OFFENSE	NUMBER OF CASES IN 1986-87	PROP. OF TOTAL	PROP. OF CHGS REDUCED		CONSTANT OPTIMAL ALLOCATION		
			ALL AVAIL. DATA	STANDARD DEVIATION	PROPORTIONALITY	SF	n
Property	153	0.33	0.21	0.41	0.53	0.22	33
Violent	77	0.17	0.45	0.50	0.53	0.26	20
Drugs	93	0.20	0.18	0.39	0.53	0.20	19
Sexual	77	0.17	0.16	0.36	0.53	0.19	15
Other	54	0.12	0.21	0.41	0.53	0.22	12
Murder	5	0.01	0.30	0.46	0.53	0.24	1
	-----	----					-----
	459	1.00					100

Source: Alaska Judicial Council/ISER

1989 ALASKA PLEA BARGAINING STUDY
SAMPLE DESIGN
TABLE S-4

Bethel (1986-87)

OFFENSE	NUMBER OF CASES IN 1986-87	PROP. OF TOTAL	PROP. OF CHGS REDUCED		CONSTANT OPTIMAL ALLOCATION		
			ALL AVAIL. DATA	STANDARD DEVIATION	PROPORTIONALITY	SF	n
Property	144	0.30	0.25	0.43	0.48	0.21	30
Violent	120	0.25	0.41	0.49	0.48	0.24	29
Drugs	24	0.05	0.23	0.42	0.48	0.20	5
Sexual	136	0.29	0.21	0.41	0.48	0.20	27
Other	37	0.08	0.18	0.38	0.48	0.19	7
Murder	12	0.03	0.36	0.48	0.48	0.23	3
	473	1.00					100

Barrow (1986-87)

OFFENSE	NUMBER OF CASES IN 1986-87	PROP. OF TOTAL	PROP. OF CHGS REDUCED		CONSTANT OPTIMAL ALLOCATION		
			ALL AVAIL. DATA	STANDARD DEVIATION	PROPORTIONALITY	SF	n
Property	60	0.30	0.19	0.39	1.18	0.46	28
Violent	56	0.28	0.41	0.49	1.18	0.58	33
Drugs	26	0.13	0.13	0.34	1.18	0.40	10
Sexual	37	0.18	0.22	0.42	1.18	0.49	18
Other	18	0.09	0.21	0.41	1.18	0.48	9
Murder	4	0.02	0.33	0.47	1.18	0.56	2
	201	1.00					100

Source: Alaska Judicial Council/ISER

1989 ALASKA PLEA BARGAINING STUDY
SAMPLE DESIGN
TABLE S-5

Nome (1986-87)

OFFENSE	NUMBER OF CASES IN 1986-87	PROP. OF CHGS REDUCED			CONSTANT OPTIMAL ALLOCATION		
		PROP. OF TOTAL	ALL AVAIL. DATA	STANDARD DEVIATION	PROPORTIONALITY	SF	n
Property	80	0.31	0.29	0.45	0.42	0.19	15
Violent	45	0.17	0.43	0.50	0.42	0.21	9
Drugs	30	0.12	0.15	0.35	0.42	0.15	4
Sexual	95	0.37	0.35	0.48	0.42	0.20	19
Other	5	0.02	0.39	0.49	0.42	0.20	1
Murder	4	0.02	0.58	0.49	0.42	0.21	1
	-----	----					-----
	259	1.00					50

Kotzebue (1986-87)

OFFENSE	NUMBER OF CASES IN 1986-87	PROP. OF CHGS REDUCED			CONSTANT OPTIMAL ALLOCATION		
		PROP. OF TOTAL	ALL AVAIL. DATA	STANDARD DEVIATION	PROPORTIONALITY	SF	n
Property	71	0.43	0.37	0.48	0.64	0.31	22
Violent	34	0.20	0.60	0.49	0.64	0.31	11
Drugs	12	0.07	0.33	0.47	0.64	0.30	4
Sexual	32	0.19	0.31	0.46	0.64	0.29	9
Other	10	0.06	0.23	0.42	0.64	0.27	3
Murder	7	0.04	0.25	0.43	0.64	0.28	2
	-----	----					-----
	166	1.00					50

Source: Alaska Judicial Council/ISER

1989 ALASKA PLEA BARGAINING STUDY
SAMPLE DESIGN
TABLE S-6

Sitka (1986-87)

OFFENSE	NUMBER OF CASES IN 1986-87	PROP. OF TOTAL	PROP. OF CHGS REDUCED		CONSTANT OPTIMAL ALLOCATION		
			ALL AVAIL. DATA	STANDARD DEVIATION	PROPORTIONALITY	SF	n
Property	42	0.32	0.30	0.46	1.05	0.48	20
Violent	30	0.23	0.40	0.49	1.05	0.52	15
Drugs	40	0.31	0.17	0.38	1.05	0.40	16
Sexual	15	0.11	0.21	0.41	1.05	0.43	6
Other	3	0.02	0.27	0.44	1.05	0.47	1
Murder	1	0.01	0.68	0.46	1.05	0.49	0
	-----	----					-----
	131	1.00					60

Palmer (1986-87)

OFFENSE	NUMBER OF CASES IN 1986-87	PROP. OF TOTAL	PROP. OF CHGS REDUCED		CONSTANT OPTIMAL ALLOCATION		
			ALL AVAIL. DATA	STANDARD DEVIATION	PROPORTIONALITY	SF	n
Property	211	0.36	0.28	0.45	0.20	0.09	19
Violent	126	0.22	0.39	0.49	0.20	0.10	12
Drugs	80	0.14	0.20	0.40	0.20	0.08	6
Sexual	85	0.15	0.20	0.40	0.20	0.08	7
Other	74	0.13	0.17	0.38	0.20	0.07	6
Murder	7	0.01	0.33	0.47	0.20	0.09	1
	-----	----					-----
	583	1.00					50

Source: Alaska Judicial Council/ISER

Sample Data Processing

As I mentioned above, we transferred selected data from the master PROMIS file to the data collection forms for use in the field. I decided that we should be able to compare this data with data for the same record coming in from the field. In this way we will be able to evaluate the accuracy of the PROMIS data and the accuracy of my attempt to match the arrest and prosecutor charge records within a given case (a long story I won't go into here). I therefore saved the initially exported PROMIS data along with a match key (SORTNO) and a sample weight as one SPSSx file (ORIGSAMP.SPS).

After entering the field data (including corrections to the PROMIS data), we exported the data from Q&A to ASCII files and uploaded these files to the VAX for processing in SPSSx. The master file for these data is SAMPLE.SPS. The original data and field data SPSSx files exist as a combined master file, AJC88PLB.SPS.

The program code used to generate the original sample file is contained in Attachment 4. Note that I treated the Anchorage 1986 sample differently from the other files (AN87SAM.SPS is an example of how the rest of the files were treated). As you will recall, we thought we had a good PROMIS tape and found that at best it could be used to draw the Anchorage '86 sample. To maintain our field schedule, we used that tape to generate the '86 sample. We received a corrected tape for the remaining samples. The code used to generate the field data file is contained in Attachment 5 (AJCSAMPL.SPC and SAMPLE.SPC). The final page of Attachment 5 contains the code for joining the original sample data and field data files (AJC88PLB.SPC).

Attachment 6 contains the data dictionary for all variables in the combined original sample and field data file (SAMP89.AJC). As a general rule, computed variables ending in "S" or starting with "ARS" pertain to field data. The word "FIELD" in the variable title is another cue to data collected or verified in the field. Note that I have tried to duplicate the variables computed in the PROMIS master file as well as creating additional variables. Of principal interest are the charge reduction variables. In the case of the most serious arrest charge, these computed variables are CHGRED1A, CHGRED2A, CHGRED3A, CHGRED4A, CHGRED5A, CHGRED6A. They are derived from changes in the class of offense codes at different stages of the prosecution.

Analysis of 1978 Plea Bargaining Study Data

Given the changes in computer hardware and software we were lucky to find a machine readable tape file containing the raw data (now saved on the VAX as PLEA_456.DAT) and final set of computed variables for the 1978 Plea Bargaining Study. The tape was archived at the Justice Center at the University of Alaska Anchorage. Our measure of good fortune is actually much greater: the Justice Center also located complete documentation on the SPSS code and analysis memos for the study prepared by Stevens Clarke in 1979. This documentation

enabled me to quickly recreate the final SPSS file, complete with all variable and value labels and missing data specifications (PLBG78.SPC). The code used to recreate the file is contained in Attachment 7 (PLBG78.SPC).

Since the unit of analysis in the 1978 plea bargaining study was the charge rather than the case, it was necessary to restructure the file. To do this, I selected records with the same charge number (e.g. charge number 1) and saved these records to a separate file. I then concatenated these files so that each resulting case consisted of up to seven separate charges plus case-level data. I then attempted to compute analysis variables that mean the same thing as the analysis variables computed in the PROMIS master file and the sample data file. The computer code for these tasks is contained in Attachment 8 (PLBGCASE.SPC) and the corresponding data dictionary is contained as Attachment 9 (SAMP8.AJC).

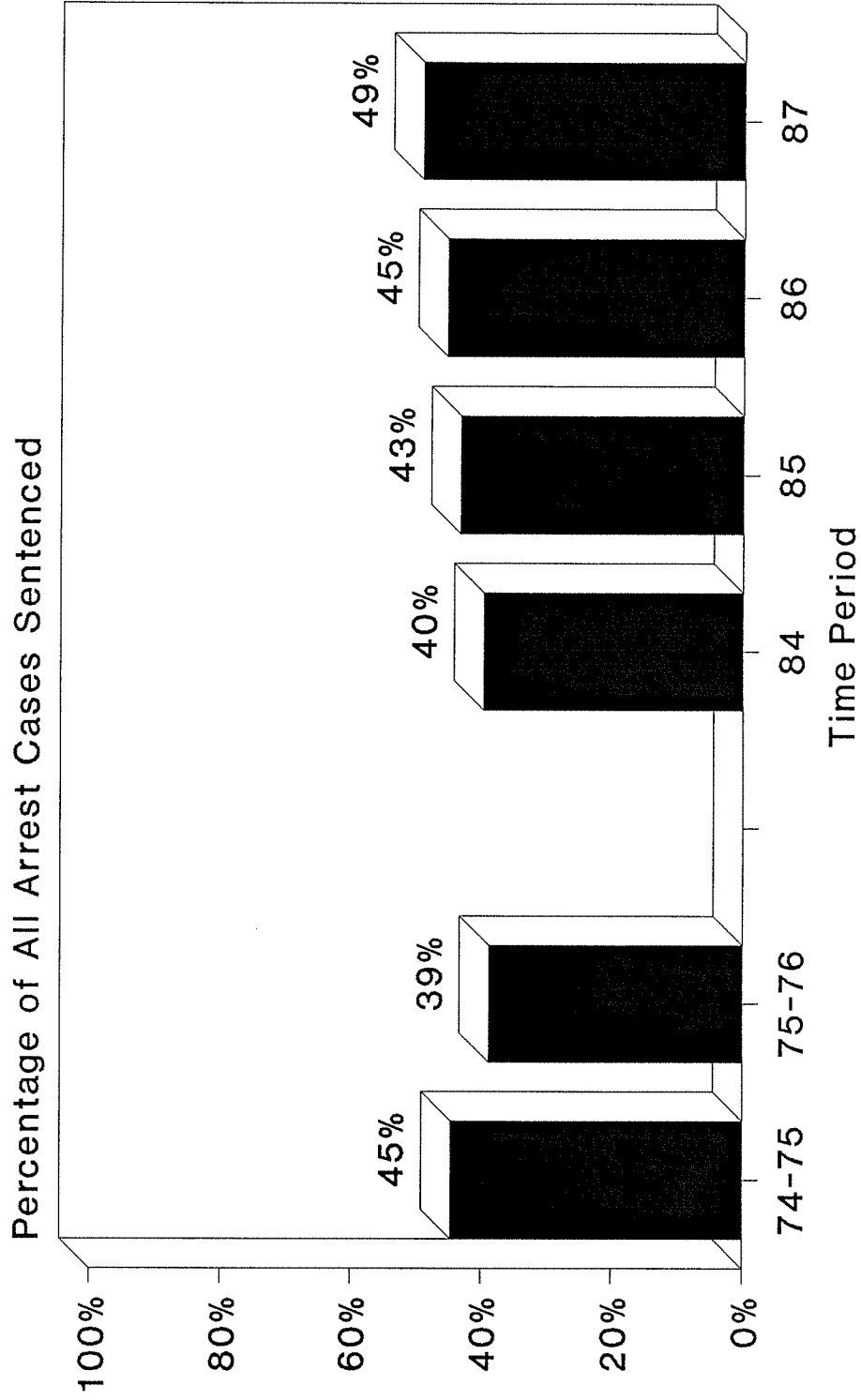
Initial Comparative Analysis

The remainder of this memorandum contains six figures and 23 tables comparing results for up to seven time periods: 1974-75 (before the ban on plea bargaining was announced); 1975-76 (immediately after the ban was announced); 1984, 1985, 1986, and 1987. I also have separately reported sample data for 1986-87 where possible so that it is possible to have some measure of the validity of the sample data and some indication of possible inaccuracies in the PROMIS database.

In preparing these tables, I have tried to first provide summary comparisons and then to display detailed results by location and offense type combinations (e.g. Kotzebue violent offenses). Note that figures reported in brackets are based on fewer than ten cases.

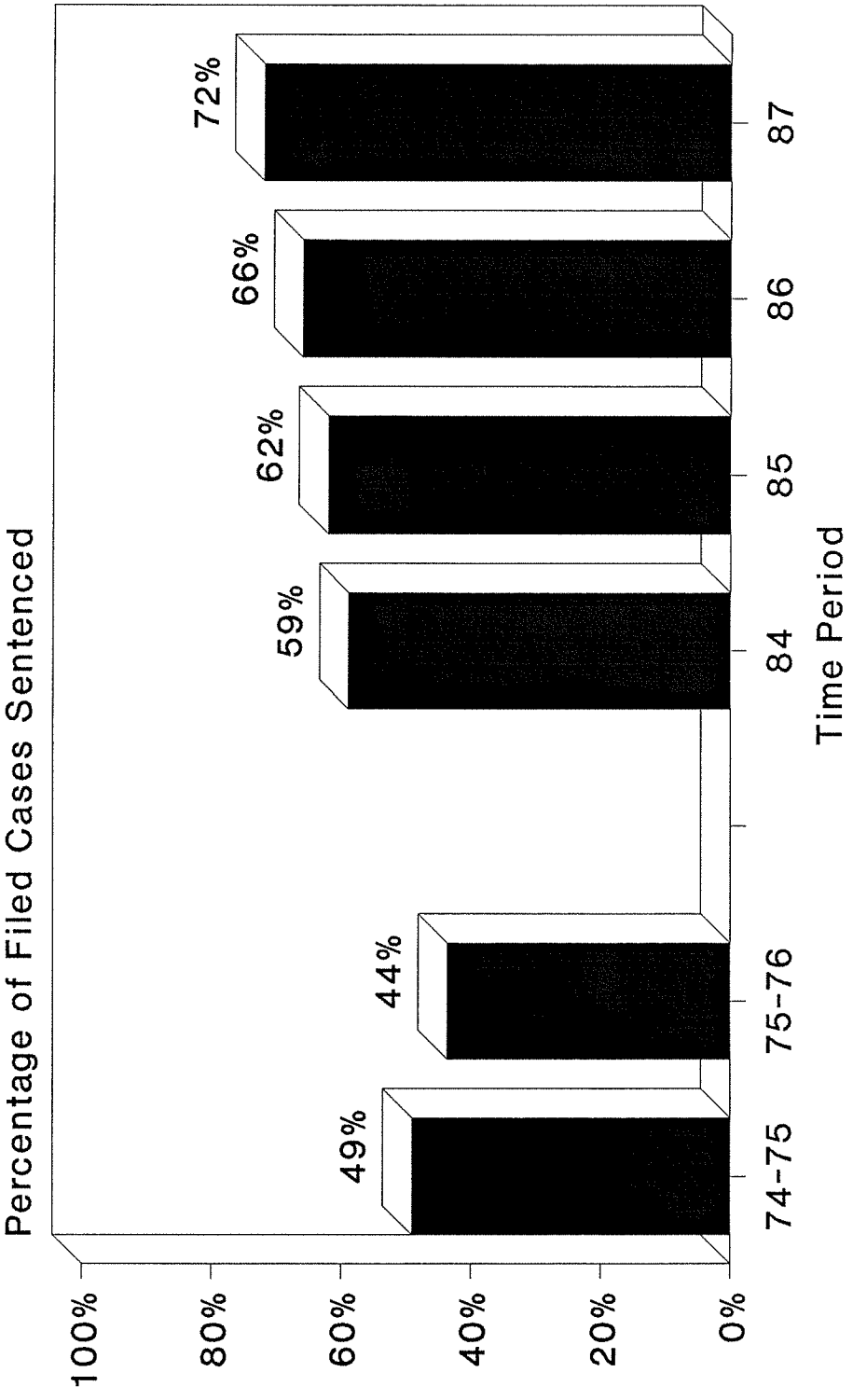
While I have attempted to unearth my mistakes, doubtless some are still lurking in the data. I trust you, the committee, and time will find them. I look forward to our meeting with the committee.

Figure 1
Arrest Conviction Rate
(Anchorage, Fairbanks, Juneau)



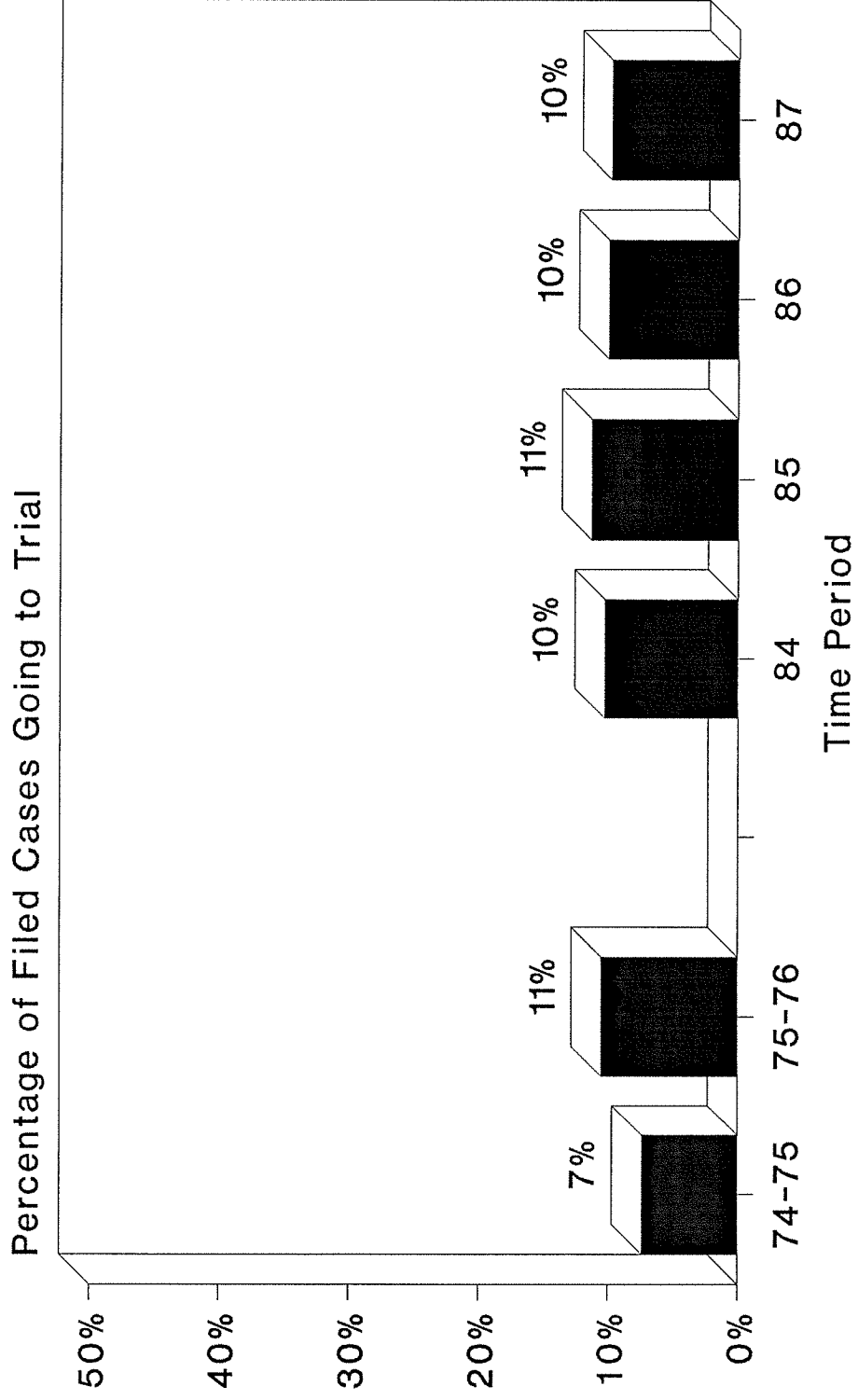
Source: Alaska Judicial Council/ISER

Figure 2
Filed Conviction Rate
(Anchorage, Fairbanks, Juneau)



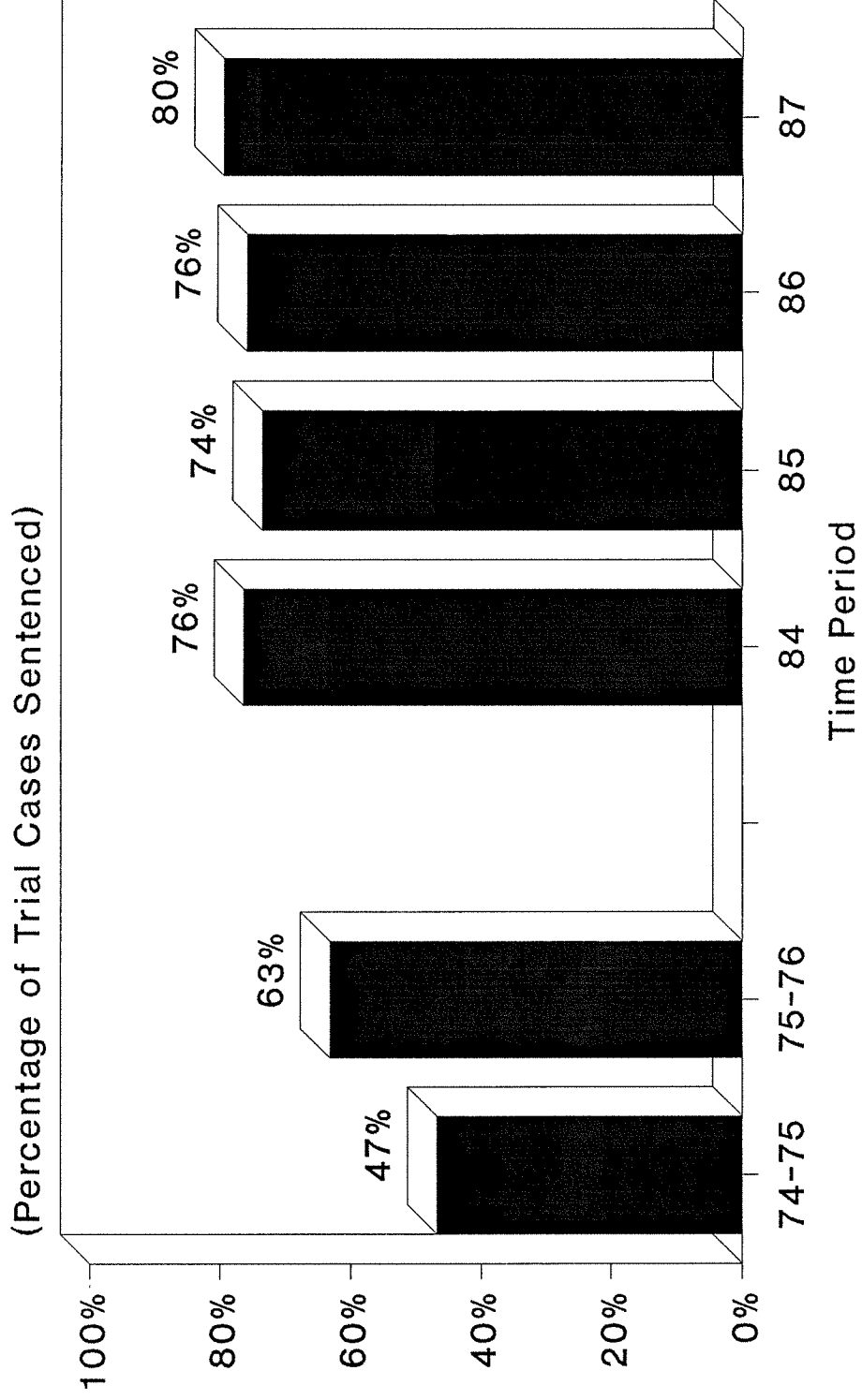
Source: Alaska Judicial Council/ISER

Figure 3
Filed Trial Rate
(Anchorage, Fairbanks, Juneau)



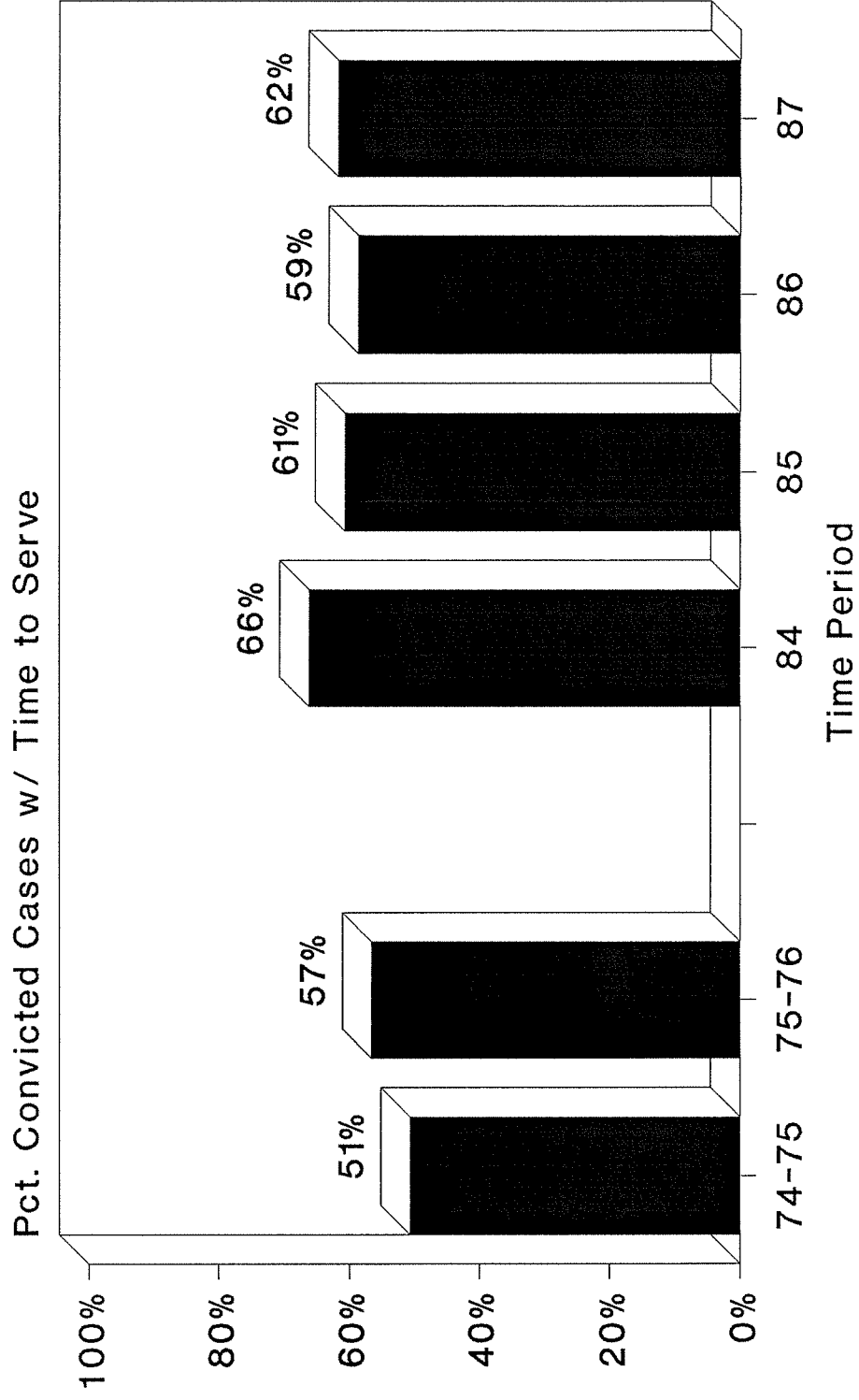
Source: Alaska Judicial Council/ISER

Figure 4
Trial Conviction Rate
(Anchorage, Fairbanks, Juneau)



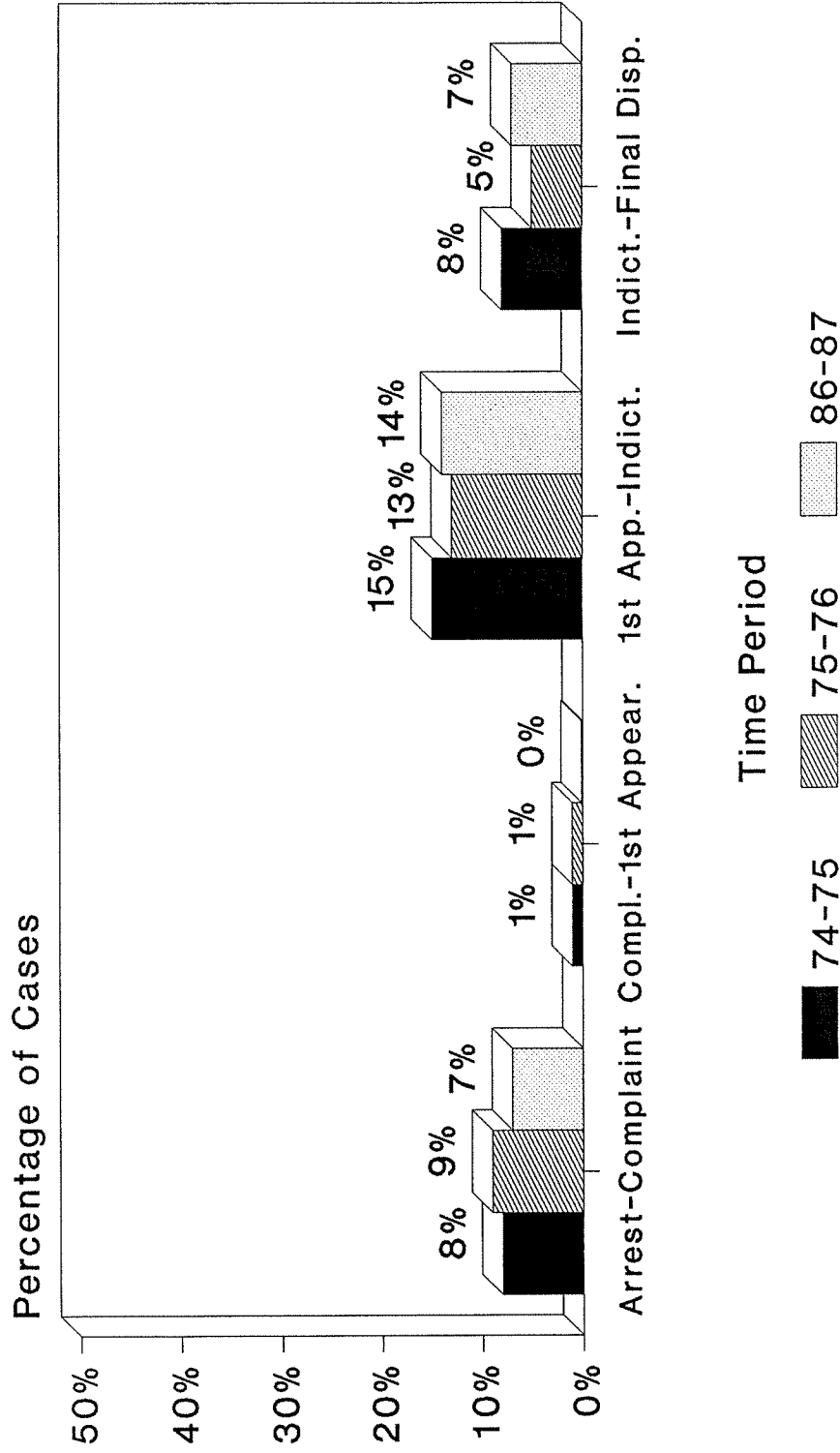
Source: Alaska Judicial Council/ISER

Figure 5
Convicted Sentencing Rate
(Anchorage, Fairbanks, Juneau)



Source: Alaska Judicial Council/ISER

Figure 6
 Charge Reductions
 (Percentage of All Cases Sentenced)



Source: Alaska Judicial Council/ISER

Plea Bargaining/Presumptive Sentencing Study

Table 1
Arrest Conviction Rate
(Percentage Distributions)

Anchorage, Fairbanks, Juneau	8/15/74-	8/15/75-	1984	1985	1986	1987	WEIGHTED
	8/14/75	8/14/76					SAMPLE
	-----	-----	-----	-----	-----	-----	(86,87)
Sentenced	45	39	40	43	45	49	49
Not Sentenced	55	61	60	57	55	51	52
	-----	-----	-----	-----	-----	-----	-----
	100	100	100	100	100	100	100
Number of Cases:	1,143	1,140	2,095	1,905	1,834	1,703	1,470

Table 2
Filed Conviction Rate
(Percentage Distributions)

Anchorage, Fairbanks, Juneau	8/15/74-	8/15/75-	1984	1985	1986	1987	WEIGHTED
	8/14/75	8/14/76					SAMPLE
	-----	-----	-----	-----	-----	-----	(86,87)
Sentenced	49	44	59	62	66	72	71
Not Sentenced	51	56	41	38	34	28	30
	-----	-----	-----	-----	-----	-----	-----
	100	100	100	100	100	100	100
Number of Cases:	1,040	1,014	1,412	1,327	1,263	1,164	1,033

Source: Alaska Judicial Council/ISER

*** Draft: Do Not Cite or Quote ***

Plea Bargaining/Presumptive Sentencing Study

Table 1a
Arrest Conviction Rate
(Percentage Distributions)

	All Locations				WEIGHTED SAMPLE (86,87)
	1984	1985	1986	1987	
Sentenced	39	40	43	45	46
Not Sentenced	61	60	57	55	55
	100	100	100	100	100
Number of Cases:	3,788	3,634	3,417	3,241	1,886

Table 2a
Filed Conviction Rate
(Percentage Distributions)

	All Locations				WEIGHTED SAMPLE (86,87)
	1984	1985	1986	1987	
Sentenced	58	60	65	68	70
Not Sentenced	42	40	35	32	30
	100	100	100	100	100
Number of Cases:	2,516	2,359	2,212	2,118	1,286

Source: Alaska Judicial Council/ISER

*** Draft: Do Not Cite or Quote ***

Plea Bargaining/Presumptive Sentencing Study

Table 3
Filed Trial Rate
(Percentage Distributions)

Anchorage, Fairbanks, Juneau	8/15/74- 8/14/75	8/15/75- 8/14/76	1984	1985	1986	1987	WEIGHTED SAMPLE (86,87)
	-----	-----	-----	-----	-----	-----	-----
No Trial	93	90	90	89	90	90	90
Trial	7	11	10	11	10	10	10
	-----	-----	-----	-----	-----	-----	-----
	100	100	100	100	100	100	100
Number of Cases:	1,040	1,014	1,397	1,309	1,250	1,151	1,028

Table 4
Trial Conviction Rate
(Percentage Distributions)

Anchorage, Fairbanks, Juneau	8/15/74- 8/14/75	8/15/75- 8/14/76	1984	1985	1986	1987	WEIGHTED SAMPLE (86,87)
	-----	-----	-----	-----	-----	-----	-----
Sentenced	47	63	76	74	76	80	83
Not Sentenced	53	37	24	26	24	20	17
	-----	-----	-----	-----	-----	-----	-----
	100	100	100	100	100	100	100
Number of Cases:	77	106	144	148	125	113	69

Source: Alaska Judicial Council/ISER

*** Draft: Do Not Cite or Quote ***

Plea Bargaining/Presumptive Sentencing Study

Table 3a
Filed Trial Rate
(Percentage Distributions)

	All Locations				WEIGHTED SAMPLE
	1984	1985	1986	1987	(86,87)
No Trial	90	90	92	92	91
Trial	10	10	8	8	9
	100	100	100	100	100
Number of Cases:	2,516	2,359	2,212	2,118	1,281

Table 4a
Trial Conviction Rate
(Percentage Distributions)

	All Locations				WEIGHTED SAMPLE
	1984	1985	1986	1987	(86,87)
Sentenced	72	69	75	75	85
Not Sentenced	28	31	25	25	15
	100	100	100	100	100
Number of Cases:	261	234	182	171	122

Source: Alaska Judicial Council/ISER

*** Draft: Do Not Cite or Quote ***

Plea Bargaining/Presumptive Sentencing Study

Table 5
Convicted Sentencing Rate
(Percentage Distributions)

Anchorage, Fairbanks, Juneau	8/15/74-	8/15/75-	1984	1985	1986	1987	WEIGHTED
	8/14/75	8/14/76					SAMPLE
	-----						(86,87)
No Active Sentence	49	43	34	39	41	38	30
Time to Serve	51	57	66	61	59	62	70
	-----						-----
	100	100	100	100	100	100	100
Number of Cases:	511	445	885	860	864	863	475

Table 6
Charge Reductions
(Percentage Distributions)

Anchorage, Fairbanks, Juneau	8/15/74-	8/15/75-	WEIGHTED
	8/14/75	8/14/76	SAMPLE
Stage Reduced	-----		(86,87)
Arrest-Complaint	8	9	7
Compl.-1st Appearance	1	1	0.1
1st App.-Indictment	15	13	14
1st App.-Before Indict.	NA	NA	13
Before Indict.-Indict.	NA	NA	1
Indict.-Final Disp.	8	5	7
Indict.-After Ind.	NA	NA	4
After Indict.-Final D.	NA	NA	3

Source: Alaska Judicial Council/ISER

*** Draft: Do Not Cite or Quote ***

Plea Bargaining/Presumptive Sentencing Study

Table 5a
Convicted Sentencing Rate
(Percentage Distributions)

All Locations					WEIGHTED
	1984	1985	1986	1987	SAMPLE (86,87)
No Active Sentence	31	34	35	35	28
Time to Serve	69	66	65	65	72
	100	100	100	100	100
Number of Cases:	1,564	1,503	1,517	1,518	907

Table 6a
Charge Reductions
(Percentage Distributions)

All Locations	WEIGHTED
Stage Reduced	SAMPLE (86,87)
Arrest-Complaint	8
Compl.-1st Appearance	0.1
1st App.-Indictment	11
1st App.-Before Indict.	10
Before Indict.-Indict.	1
Indict.-Final Disp.	10
Indict.-After Ind.	7
After Indict.-Final D.	3

Source: Alaska Judicial Council/ISER

*** Draft: Do Not Cite or Quote ***

Plea Bargaining/Presumptive Sentencing Study

Table 7
 Profile of Felony Case Sample
 (Weighted Percentage Distributions)

Sex	Entire Sample	Convicted Only	Marital Status	Entire Sample	Convicted Only
Male	89	91	Married	14	15
Female	11	9	Single	32	52
			Unknown	54	33
	100	100		100	100
Age			Race		
Under 25	39	44	White	56	56
25-34	37	38	Native	28	29
35-44	16	13	Black	9	10
45-54	6	4	Other	2	3
55 plus	2	1	Don't Know	5	3
	100	100		100	100
Education			Employment Status		
Less than HS	14	24	Unemployed	27	32
HS	14	26	Sporadic Jobs	10	16
Vocational Educ.	3	4	Multiple Jobs	1	2
Some College	5	8	Steady Job	19	21
College D.	1	1	Student	1	1
Post College	0	0	Homemaker	0	0
Don't Know	64	37	Retired	0	0
	100	100	Don't Know	41	27
				100	100

Source: Alaska Judicial Council/ISER

*** Draft: Do Not Cite or Quote ***

Plea Bargaining/Presumptive Sentencing Study

Table 7, continued
 Profile of Felony Case Sample
 (Weighted Percentage Distributions)

	Entire Sample	Convicted Only		Entire Sample	Convicted Only
Household Income			Prior Felonies		
-----	-----	-----	-----	-----	-----
Under 15,000	14	24	None	58	65
15-35,000	5	8	One	14	16
Over 35,000	1	2	Two or more	8	11
			Unknown	21	7
Low Income	16	22		-----	-----
Moderate Income	2	2		100	100
High Income	0	0			
Don't Know	62	43			
	-----	-----			
	100	100	Prior Misdemeanors	Entire Sample	Convicted Only
			-----	-----	-----
Notice of Aggravating Factors			None	34	36
-----			One	14	16
Yes	7	13	Two or more	32	42
No	8	16	Unknown	21	6
Not Applicable	84	70		-----	-----
Unknown	1	1		100	100
	-----	-----			
	100	100	Prior Offenses- Unknown Type		

Notice of Mitigating Factors			None	69	82
-----			One	6	6
Yes	6	12	Two or more	5	5
No	9	17	Unknown	21	6
Not Applicable	84	70		-----	-----
Unknown	1	1		100	100
	-----	-----			
	100	100	Was Victim a Relative		

			Yes	12	10
			No	73	75
			Not Applicable	14	15
			Unknown	2	0
				-----	-----
				100	100

Source: Alaska Judicial Council/ISER

*** Draft: Do Not Cite or Quote ***

Plea Bargaining/Presumptive Sentencing Study

Table 7, continued
 Profile of Felony Case Sample
 (Weighted Percentage Distributions)

Evidence of Chronic Substance Abuse	Entire Sample	Convicted Only	Evidence of Substance During Offense	Entire Sample	Convicted Only
Yes	40	57	Yes	36	41
No	36	33	No	50	51
Unknown	24	10	Unknown	15	9
	-----	-----		-----	-----
	100	100		100	100
Presentence Report Recommendation			Unweighted Sample Size By Strata		
	-----	-----		-----	-----
Short Sentence	4	8	Anchorage	985	546
Moderate Sentence	5	9	Fairbanks	381	145
Long Sentence	5	9	Juneau	104	44
Time to Serve	13	24	Barrow	98	39
Probation	4	9	Bethel	104	40
Prob.w/ Rehab.	1	2	Nome	52	22
No Recomm.	4	7	Kotzebue	53	26
Don't Know	1	2	Sitka	56	27
Not Applicable	64	30	Palmer	53	20
	-----	-----		-----	-----
	100	100		1,886	909

Source: Alaska Judicial Council/ISER

*** Draft: Do Not Cite or Quote ***

Table 8
 Arrest Conviction Rate by Type of Offense and Court Location
 (Percentage Distributions)

	8/15/74- 8/14/75	8/15/75- 8/14/76	1984	1985	1986	1987	WEIGHTED SAMPLE (86,87)
Anchorage, Fairbanks, Juneau							
All Offenses	45	39	40	43	45	49	49
By Type of Offense							
Murder,Kidnapping	59	67	57	54	68	48	59
Violent	43	38	44	46	43	52	51
Property	46	43	39	46	48	53	48
Drugs	43	46	39	43	47	52	51
Sexual	41	29	38	34	35	34	41
Other	44	32	28	32	46	40	44
By Court Location							
Anchorage	43	34	45	49	52	54	55
Fairbanks	49	49	29	33	37	40	38
Juneau	44	40	42	38	30	44	42
Barrow	*	*	41	43	45	37	41
Nome	*	*	42	34	47	49	41
Kotzebue	*	*	51	45	51	52	53
Bethel	*	*	39	35	34	34	37
Remainder 1st	*	*	35	33	43	49	49
Remainder 3rd	*	*	38	34	38	38	35
All Locations							
All Offenses			39	40	43	45	41
By Type of Offense							
Murder,Kidnapping			49	49	57	45	48
Violent			45	46	45	51	50
Property			37	42	41	47	44
Drugs			38	35	48	49	52
Sexual			38	32	38	33	36
Other			34	31	43	37	44

Source: Alaska Judicial Council/ISER

*** Draft: Do Not Cite or Quote ***

Table 8, Continued
 Arrest Conviction Rate by Type of Offense and Court Location
 (Percentage Distributions)

	8/15/74- 8/14/75	8/15/75- 8/14/76	1984	1985	1986	1987	WEIGHTED SAMPLE (86,87)
Anchorage							
Murder,Kidnapping	54	64	57	52	80	52	72
Violent	42	35	49	52	48	57	53
Property	44	37	47	54	55	59	58
Drugs	40	40	41	47	55	57	59
Sexual	38	19	40	33	42	37	44
Other	40	28	34	45	59	43	51
Fairbanks							
Murder,Kidnapping	67	71	[54]	[58]	[46]	[50]	[29]
Violent	47	46	32	31	35	47	44
Property	51	52	27	37	40	43	37
Drugs	46	53	27	33	40	37	39
Sexual	46	40	34	32	26	31	36
Other	48	429	[9]	[10]	37	29	[32]
Juneau							
Murder,Kidnapping	-	-	[100]	[50]	-	[20]	[20]
Violent	37	25	52	47	33	34	53
Property	40	53	41	32	34	55	34
Drugs	[50]	[50]	43	32	30	52	[42]
Sexual	[43]	[75]	36	43	25	29	[40]
Other	61	[24]	39	[40]	[23]	52	[45]
Barrow							
Murder,Kidnapping	*	*	-	[67]	-	[33]	-
Violent	*	*	47	43	54	61	50
Property	*	*	35	37	19	37	36
Drugs	*	*	[29]	[39]	[93]	[18]	[71]
Sexual	*	*	48	53	41	13	[28]
Other	*	*	[5]	[46]	[46]	-	[43]
Nome							
Murder,Kidnapping	*	*	[84]	-	[0]	[100]	[75]
Violent	*	*	43	37	61	38	[33]
Property	*	*	40	35	48	36	[47]
Drugs	*	*	[18]	[19]	[42]	[57]	[50]
Sexual	*	*	43	36	42	62	[32]
Other	*	*	-	[50]	[100]	-	[100]

* - Court Locations Not Included in 1978 Study

[] - Less Than 10 Observations

Source: Alaska Judicial Council/ISER

*** Draft: Do Not Cite or Quote ***

Table 8, Continued
 Arrest Conviction Rate by Type of Offense and Court Location
 (Percentage Distributions)

	8/15/74- 8/14/75	8/15/75- 8/14/76	1984	1985	1986	1987	WEIGHTED SAMPLE (86,87)
Kotzebue							
Murder,Kidnapping	*	*	[50]	[50]	-	[40]	[29]
Violent	*	*	59	70	77	68	[73]
Property	*	*	42	49	46	54	52
Drugs	*	*	[38]	[33]	[20]	[60]	[25]
Sexual	*	*	61	[23]	[63]	[40]	[45]
Other	*	*	[50]	[25]	-	[29]	[100]
Bethel							
Murder,Kidnapping	*	*	[56]	[55]	[60]	[25]	[16]
Violent	*	*	50	49	43	54	56
Property	*	*	26	42	29	28	[27]
Drugs	*	*	80	[16]	[25]	[35]	[25]
Sexual	*	*	29	24	33	22	[35]
Other	*	*	[44]	[11]	[33]	[19]	[59]
Remainder 1st Jud.D.							
Murder,Kidnapping	*	*	[25]	[25]	[100]	[20]	[0]
Violent	*	*	42	46	51	47	[46]
Property	*	*	35	37	40	48	59
Drugs	*	*	26	30	45	56	[50]
Sexual	*	*	35	[17]	43	55	[42]
Other	*	*	[42]	[29]	[22]	[22]	-
Remainder 3rd Jud.D.							
Murder,Kidnapping	*	*	[27]	[41]	[44]	[57]	[67]
Violent	*	*	44	44	42	48	[42]
Property	*	*	35	34	30	35	[25]
Drugs	*	*	40	20	50	42	[67]
Sexual	*	*	38	34	42	23	[14]
Other	*	*	39	33	48	40	[33]

* - Court Locations Not Included in 1978 Study
 [] - Less Than 10 Observations

Source: Alaska Judicial Council/ISER

*** Draft: Do Not Cite or Quote ***

Table 9
 Filed Conviction Rate by Type of Offense and Court Location
 (Percentage Distributions)

Anchorage, Fairbanks, Juneau	8/15/74- 8/14/75	8/15/75- 8/14/76	1984	1985	1986	1987	WEIGHTED SAMPLE (86,87)
All Offenses	49	44	59	62	66	72	71
By Type of Offense							
Murder,Kidnapping	62	67	77	69	78	57	72
Violent	48	42	63	64	60	73	69
Property	50	47	58	63	69	78	73
Drugs	47	50	52	55	63	65	67
Sexual	46	35	67	64	69	64	70
Other	50	38	38	56	69	68	66
By Court Location							
Anchorage	48	39	64	67	69	73	72
Fairbanks	51	53	50	55	64	72	68
Juneau	49	46	55	52	55	68	67
Barrow	*	*	68	68	83	57	79
Nome	*	*	67	62	71	68	68
Kotzebue	*	*	56	59	58	60	60
Bethel	*	*	74	78	70	64	71
Remainder 1st	*	*	47	45	57	67	72
Remainder 3rd	*	*	56	54	61	61	67
All Locations							
All Offenses			49	44	58	60	65
By Type of Offense							
Murder,Kidnapping			72	62	66	59	62
Violent			64	65	64	73	71
Property			55	60	63	70	70
Drugs			51	48	62	61	67
Sexual			66	62	71	66	71
Other			49	59	70	63	73

Source: Alaska Judicial Council/ISER

*** Draft: Do Not Cite or Quote ***

Table 9, Continued
 Filed Conviction Rate by Type of Offense and Court Location
 (Percentage Distributions)

	8/15/74- 8/14/75	8/15/75- 8/14/76	1984	1985	1986	1987	WEIGHTED SAMPLE (86,87)
Anchorage							
Murder,Kidnapping	58	64	76	67	84	60	81
Violent	47	39	66	69	61	74	69
Property	49	42	63	69	70	80	76
Drugs	46	46	56	57	71	65	72
Sexual	47	24	70	67	72	66	66
Other	48	34	46	63	71	60	63
Fairbanks							
Murder,Kidnapping	67	71	[78]	[78]	[63]	[57]	[42]
Violent	50	51	55	52	58	78	69
Property	53	56	48	55	70	75	69
Drugs	46	56	44	51	55	65	57
Sexual	46	50	63	61	62	69	75
Other	49	49	17	33	63	63	70
Juneau							
Murder,Kidnapping	-	-	[100]	[50]	-	[33]	[33]
Violent	44	33	72	61	52	54	74
Property	44	55	56	47	55	77	61
Drugs	[50]	[50]	50	44	47	68	62
Sexual	[43]	[75]	62	54	64	50	[75]
Other	65	31	44	55	[71]	100	[71]
Barrow							
Murder,Kidnapping	*	*	[0]	[100]	-	[33]	[0]
Violent	*	*	65	63	88	77	89
Property	*	*	64	68	50	55	63
Drugs	*	*	[67]	56	100	[25]	[100]
Sexual	*	*	80	[89]	82	[50]	[83]
Other	*	*	[71]	[66]	[86]	[0]	[100]
Nome							
Murder,Kidnapping	*	*	[83]	-	[0]	[100]	[75]
Violent	*	*	81	58	70	57	[50]
Property	*	*	56	67	78	60	70
Drugs	*	*	[50]	[50]	[53]	[67]	[67]
Sexual	*	*	68	61	75	81	[75]
Other	*	*	-	[100]	[100]	[0]	[100]

 * - Court Locations Not Included in 1978 Study
 [] - Less Than 10 Observations

Source: Alaska Judicial Council/ISER

*** Draft: Do Not Cite or Quote ***

Table 9, Continued
 Filed Conviction Rate by Type of Offense and Court Location
 (Percentage Distributions)

	8/15/74- 8/14/75	8/15/75- 8/14/76	1984	1985	1986	1987	WEIGHTED SAMPLE (86,87)
Kotzebue							
Murder,Kidnapping	*	*	[50]	[50]	[0]	[50]	[33]
Violent	*	*	64	78	83	77	73
Property	*	*	45	62	50	61	61
Drugs	*	*	[43]	[50]	[20]	[60]	[25]
Sexual	*	*	69	39	[100]	50	[58]
Other	*	*	[50]	[33]	[0]	[40]	[100]
Bethel							
Murder,Kidnapping	*	*	[63]	[86]	[75]	[67]	[35]
Violent	*	*	81	79	75	75	83
Property	*	*	67	85	63	58	55
Drugs	*	*	92	[50]	[50]	[60]	[58]
Sexual	*	*	69	70	78	65	82
Other	*	*	[67]	[100]	[63]	[33]	[74]
Remainder 1st Jud.D.							
Murder,Kidnapping	*	*	[33]	[25]	[100]	[33]	[0]
Violent	*	*	54	58	64	68	[67]
Property	*	*	52	51	54	70	91
Drugs	*	*	30	30	51	63	67
Sexual	*	*	50	31	60	76	[71]
Other	*	*	[63]	[50]	[57]	[67]	-
Remainder 3rd Jud.D.							
Murder,Kidnapping	*	*	[80]	50	50	[67]	[67]
Violent	*	*	66	67	64	74	[71]
Property	*	*	48	50	51	55	[57]
Drugs	*	*	51	31	65	54	[67]
Sexual	*	*	65	68	71	61	[50]
Other	*	*	61	70	79	70	[100]

* - Court Locations Not Included in 1978 Study
 [] - Less Than 10 Observations

Source: Alaska Judicial Council/ISER

*** Draft: Do Not Cite or Quote ***

Plea Bargaining/Presumptive Sentencing Study

Table 10
 Filed Trial Rate by Type of Offense and Court Location
 (Percentage Distributions)

Anchorage, Fairbanks, Juneau	8/15/74- 8/14/75	8/15/75- 8/14/76	1984	1985	1986	1987	WEIGHTED SAMPLE (86,87)
All Offenses	7	11	10	11	10	10	10
By Type of Offense							
Murder,Kidnapping	29	56	52	54	52	34	46
Violent	10	15	13	15	13	12	13
Property	5	6	4	6	5	6	6
Drugs	7	21	9	7	7	8	5
Sexual	3	3	17	17	15	18	15
Other	6	7	14	19	14	8	10
By Court Location							
Anchorage	5	8	11	11	9	10	11
Fairbanks	14	16	11	14	15	12	10
Juneau	5	4	6	7	6	4	7
Barrow	*	*	30	27	11	10	7
Nome	*	*	7	3	3	9	-
Kotzebue	*	*	3	3	7	2	1
Bethel	*	*	19	9	4	7	5
Remainder 1st	*	*	11	4	6	5	5
Remainder 3rd	*	*	8	8	5	6	13
All Locations							
All Offenses			10	10	8	8	9
By Type of Offense							
Murder,Kidnapping			48	37	40	28	36
Violent			14	12	12	11	11
Property			4	5	4	4	6
Drugs			7	7	6	6	3
Sexual			18	16	11	13	10
Other			14	19	10	10	15

Source: Alaska Judicial Council/ISER

*** Draft: Do Not Cite or Quote ***

Table 10, Continued
 Filed Trial Rate by Type of Offense and Court Location
 (Percentage Distributions)

	8/15/74- 8/14/75	8/15/75- 8/14/76	1984	1985	1986	1987	WEIGHTED SAMPLE (86,87)
Anchorage							
Murder,Kidnapping	8	55	48	47	53	36	48
Violent	7	11	13	13	11	10	13
Property	3	4	4	5	4	6	5
Drugs	4	27	13	8	7	5	5
Sexual	6	5	19	21	15	25	24
Other	3	6	14	25	9	12	12
Fairbanks							
Murder,Kidnapping	[56]	[57]	[67]	[78]	[50]	[29]	[42]
Violent	16	26	17	21	22	24	18
Property	11	10	5	9	9	6	8
Drugs	15	22	8	3	11	27	7
Sexual	[0]	[0]	15	16	21	12	4
Other	12	11	16	15	21	0	0
Juneau							
Murder,Kidnapping	-	-	[0]	[0]	-	[33]	[33]
Violent	[12]	[0]	6	17	5	8	7
Property	4	7	3	4	6	2	11
Drugs	[0]	[0]	2	6	0	4	0
Sexual	[0]	[0]	14	5	8	0	[0]
Other	-	6	13	0	[29]	8	[14]
Barrow							
Murder,Kidnapping	*	*	[0]	[50]	-	[33]	[0]
Violent	*	*	47	28	20	13	17
Property	*	*	14	17	10	5	6
Drugs	*	*	[0]	27	0	[0]	[0]
Sexual	*	*	47	56	9	[25]	[0]
Other	*	*	[14]	[11]	[17]	[0]	[0]
Nome							
Murder,Kidnapping	*	*	[50]	-	[0]	[0]	[0]
Violent	*	*	0	4	5	0	[0]
Property	*	*	0	0	4	10	0
Drugs	*	*	[0]	[0]	0	[0]	[0]
Sexual	*	*	9	4	4	16	[0]
Other	*	*	[0]	[0]	[0]	[0]	[0]

* - Court Locations Not Included in 1978 Study

[] - Less Than 10 Observations

Source: Alaska Judicial Council/ISER

*** Draft: Do Not Cite or Quote ***

Table 10, Continued
 Filed Trial Rate by Type of Offense and Court Location
 (Percentage Distributions)

	8/15/74- 8/14/75	8/15/75- 8/14/76	1984	1985	1986	1987	WEIGHTED SAMPLE (86,87)
Kotzebue							
Murder,Kidnapping	*	*	[50]	[0]	[50]	[0]	[17]
Violent	*	*	0	6	8	0	0
Property	*	*	0	4	0	0	0
Drugs	*	*	[0]	[0]	[0]	[0]	[0]
Sexual	*	*	7	0	[20]	13	[0]
Other	*	*	[0]	[0]	[0]	[0]	[0]
Bethel							
Murder,Kidnapping	*	*	[56]	[25]	[0]	[33]	[9]
Violent	*	*	9	3	0	2	0
Property	*	*	8	4	0	4	0
Drugs	*	*	23	[0]	[25]	[22]	[0]
Sexual	*	*	32	17	3	6	9
Other	*	*	[0]	[100]	[25]	[11]	[26]
Remainder 1st Jud.D.							
Murder,Kidnapping	*	*	[50]	[13]	[0]	[0]	[0]
Violent	*	*	15	5	15	8	[22]
Property	*	*	4	2	2	4	0
Drugs	*	*	5	0	2	3	0
Sexual	*	*	20	3	20	10	[0]
Other	*	*	[25]	[29]	[0]	[33]	-
Remainder 3rd Jud.D.							
Murder,Kidnapping	*	*	[20]	29	31	[33]	[33]
Violent	*	*	15	10	7	12	[14]
Property	*	*	4	3	1	1	[14]
Drugs	*	*	2	7	6	4	[0]
Sexual	*	*	14	18	7	3	[0]
Other	*	*	13	17	0	17	[50]

* - Court Locations Not Included in 1978 Study

[] - Less Than 10 Observations

Source: Alaska Judicial Council/ISER

*** Draft: Do Not Cite or Quote ***

Plea Bargaining/Presumptive Sentencing Study

Table 11
 Trial Conviction Rate by Type of Offense and Court Location
 (Percentage Distributions)

	8/15/74- 8/14/75	8/15/75- 8/14/76	1984	1985	1986	1987	WEIGHTED SAMPLE (86,87)
All Offenses	47	63	76	74	76	80	83
By Type of Offense							
Murder,Kidnapping	[83]	80	81	80	86	83	82
Violent	52	67	80	84	73	88	92
Property	42	46	74	82	64	74	69
Drugs	[67]	55	89	54	86	73	100
Sexual	[0]	[0]	73	52	82	81	83
Other	20	78	46	67	83	67	[100]
By Court Location							
Anchorage	48	60	82	79	78	81	90
Fairbanks	48	67	64	67	75	77	77
Juneau	[25]	[67]	80	[56]	[57]	[83]	70
Barrow	*	*	90	74	[83]	[67]	[100]
Nome	*	*	[67]	[100]	[67]	[71]	-
Kotzebue	*	*	[100]	[100]	[67]	[100]	[0]
Bethel	*	*	67	[50]	[75]	[57]	[100]
Remainder 1st	*	*	65	[43]	75	[33]	[0]
Remainder 3rd	*	*	51	55	67	71	[100]
All Locations							
All Offenses			72	69	75	75	85
By Type of Offense							
Murder,Kidnapping			75	74	68	81	90
Violent			68	77	79	76	80
Property			78	75	65	71	76
Drugs			81	55	84	74	100
Sexual			73	58	74	76	88
Other			56	64	80	75	100

Source: Alaska Judicial Council/ISER

*** Draft: Do Not Cite or Quote ***

Table 11, Continued
 Trial Conviction Rate by Type of Offense and Court Location
 (Percentage Distributions)

	8/15/74- 8/14/75	8/15/75- 8/14/76	1984	1985	1986	1987	WEIGHTED SAMPLE (86,87)
Anchorage							
Murder,Kidnapping	[100]	[100]	80	[88]	100	[89]	100
Violent	69	58	87	93	72	90	92
Property	[40]	[40]	83	90	71	79	89
Drugs	[0]	[71]	93	55	[78]	[71]	[100]
Sexual	[0]	[0]	70	61	73	78	82
Other	[0]	[56]	[60]	70	[100]	[60]	[100]
Fairbanks							
Murder,Kidnapping	[80]	[50]	[83]	[71]	[50]	[100]	[67]
Violent	41	74	64	81	79	82	90
Property	46	50	[56]	69	64	[57]	57
Drugs	[100]	[25]	[67]	[0]	[100]	[71]	[100]
Sexual	-	-	[86]	[33]	[100]	[100]	[100]
Other	[29]	[100]	[0]	[50]	[60]	-	-
Juneau							
Murder,Kidnapping	-	-	-	-	-	[100]	[0]
Violent	[33]	-	[100]	[40]	[0]	[100]	[100]
Property	[0]	[50]	[100]	[100]	[33]	[100]	[50]
Drugs	-	-	[100]	[100]	-	[100]	-
Sexual	-	-	[67]	[0]	[100]	-	-
Other	-	[100]	[67]	-	[100]	[100]	[100]
Barrow							
Murder,Kidnapping	*	*	-	[100]	-	[100]	-
Violent	*	*	[78]	[60]	[100]	[67]	[100]
Property	*	*	[100]	[67]	[100]	[100]	[100]
Drugs	*	*	-	[75]	-	-	-
Sexual	*	*	[100]	[80]	[0]	[0]	-
Other	*	*	[100]	[100]	[100]	-	-
Nome							
Murder,Kidnapping	*	*	[67]	-	-	-	-
Violent	*	*	-	[100]	[100]	-	-
Property	*	*	-	-	[100]	[50]	-
Drugs	*	*	-	-	-	-	-
Sexual	*	*	[67]	[100]	[0]	[80]	-
Other	*	*	-	-	-	-	-

* - Court Locations Not Included in 1978 Study
 [] - Less Than 10 Observations

Table 11, Continued
 Trial Conviction Rate by Type of Offense and Court Location
 (Percentage Distributions)

	8/15/74- 8/14/75	8/15/75- 8/14/76	1984	1985	1986	1987	WEIGHTED SAMPLE (86,87)
Kotzebue							
Murder,Kidnapping	*	*	[100]	-	[0]	-	[100]
Violent	*	*	-	[100]	[100]	-	-
Property	*	*	-	[100]	-	-	-
Drugs	*	*	-	-	-	-	-
Sexual	*	*	[100]	-	[100]	[100]	-
Other	*	*	-	-	-	-	-
Bethel							
Murder,Kidnapping	*	*	[60]	[50]	-	[100]	[100]
Violent	*	*	[33]	[100]	-	[0]	-
Property	*	*	[100]	[0]	-	[0]	-
Drugs	*	*	[67]	-	[100]	[50]	-
Sexual	*	*	[75]	[40]	[100]	[100]	[100]
Other	*	*	[100]	[50]	-	[100]	[100]
Remainder 1st Jud.D.							
Murder,Kidnapping	*	*	[50]	[0]	-	-	-
Violent	*	*	[50]	[50]	[83]	[0]	[100]
Property	*	*	[100]	[100]	[100]	[50]	-
Drugs	*	*	[50]	-	[0]	[50]	-
Sexual	*	*	[60]	[0]	[75]	[50]	-
Other	*	*	[100]	[50]	-	[0]	-
Remainder 3rd Jud.D.							
Murder,Kidnapping	*	*	[100]	[75]	[40]	[50]	[100]
Violent	*	*	33	[44]	[86]	58	[100]
Property	*	*	[63]	[50]	[0]	[100]	[100]
Drugs	*	*	[50]	[40]	[100]	[100]	-
Sexual	*	*	64	64	[60]	[0]	-
Other	*	*	[50]	[60]	-	[100]	[100]

* - Court Locations Not Included in 1978 Study
 [] - Less Than 10 Observations

Source: Alaska Judicial Council/ISER

*** Draft: Do Not Cite or Quote ***

Plea Bargaining/Presumptive Sentencing Study

Table 12
 Convicted Active Prison Rate by Type of Offense and Court Location
 (Percentage Distributions)

	8/15/74- 8/14/75	8/15/75- 8/14/76	1984	1985	1986	1987	WEIGHTED SAMPLE (86,87)
All Offenses	51	57	66	61	59	62	70
By Type of Arrest Offense							
Murder,Kidnapping	92	83	91	85	86	75	91
Violent	62	65	70	68	73	78	79
Property	49	53	63	56	53	52	59
Drugs	50	77	60	50	46	59	71
Sexual	44	50	76	77	74	75	89
Other	31	45	46	49	48	60	66
By Court Location							
Anchorage	52	58	73	65	65	64	69
Fairbanks	48	57	52	43	43	54	67
Juneau	51	44	60	71	55	65	78
Barrow	*	*	85	71	71	86	83
Nome	*	*	79	80	76	82	83
Kotzebue	*	*	72	72	77	81	80
Bethel	*	*	89	85	85	70	75
Remainder 1st	*	*	62	60	64	68	85
Remainder 3rd	*	*	72	70	75	63	61
All Locations							
All Offenses			69	66	65	65	72
By Type of Offense							
Murder,Kidnapping			88	73	83	80	97
Violent			73	72	74	78	79
Property			63	61	59	56	65
Drugs			65	51	53	55	58
Sexual			81	81	82	79	86
Other			58	58	53	57	74

Source: Alaska Judicial Council/ISER

*** Draft: Do Not Cite or Quote ***

Table 12, Continued
 Convicted Active Prison Rate by Type of Offense and Court Location
 (Percentage Distributions)

	8/15/74- 8/14/75	8/15/75- 8/14/76	1984	1985	1986	1987	WEIGHTED SAMPLE (86,87)
Anchorage							
Murder,Kidnapping	[86]	[86]	93	92	94	72	87
Violent	59	66	78	70	80	78	76
Property	53	53	67	62	59	52	55
Drugs	50	75	68	53	48	66	80
Sexual	[75]	[60]	83	80	79	77	96
Other	29	51	58	62	54	64	67
Fairbanks							
Murder,Kidnapping	[100]	[80]	[86]	[71]	[67]	[100]	[100]
Violent	65	63	49	56	60	78	77
Property	45	55	51	37	37	46	58
Drugs	[50]	[90]	43	30	27	47	71
Sexual	[0]	[100]	59	63	53	63	73
Other	21	39	[33]	[15]	45	29	[71]
Juneau							
Murder,Kidnapping	-	-	[100]	[100]	-	[100]	[100]
Violent	[64]	[80]	62	78	46	73	91
Property	33	44	68	64	52	63	82
Drugs	[50]	[50]	55	63	65	35	[50]
Sexual	[33]	-	71	86	80	90	[100]
Other	[64]	[33]	36	[57]	[25]	85	[60]
Barrow							
Murder,Kidnapping	*	*	-	[50]	-	[100]	-
Violent	*	*	93	54	86	94	94
Property	*	*	79	86	[100]	91	90
Drugs	*	*	[100]	[56]	54	[0]	[40]
Sexual	*	*	92	[100]	[67]	[100]	[100]
Other	*	*	[60]	[67]	[57]	-	[67]
Nome							
Murder,Kidnapping	*	*	[80]	-	-	[100]	[100]
Violent	*	*	85	79	69	[89]	[100]
Property	*	*	67	83	80	75	[86]
Drugs	*	*	[50]	[100]	[38]	[50]	[50]
Sexual	*	*	88	73	91	85	[83]
Other	*	*	[0]	[100]	[100]	-	[100]

* - Court Locations Not Included in 1978 Study

[] - Less Than 10 Observations

Source: Alaska Judicial Council/ISER

*** Draft: Do Not Cite or Quote ***

Table 12, Continued
 Convicted Active Prison Rate by Type of Offense and Court Location
 (Percentage Distributions)

	8/15/74- 8/14/75	8/15/75- 8/14/76	1984	1985	1986	1987	WEIGHTED SAMPLE (86,87)
Kotzebue							
Murder,Kidnapping	*	*	[100]	[100]	-	[100]	[100]
Violent	*	*	77	93	90	77	[63]
Property	*	*	77	73	60	83	80
Drugs	*	*	[0]	[0]	[100]	[67]	[100]
Sexual	*	*	82	[50]	[80]	[78]	[100]
Other	*	*	[100]	[0]	-	[100]	[100]
Bethel							
Murder,Kidnapping	*	*	[100]	[75]	[75]	[50]	[100]
Violent	*	*	93	81	74	75	[67]
Property	*	*	81	83	83	63	[86]
Drugs	*	*	82	[100]	[100]	[43]	[0]
Sexual	*	*	94	96	100	92	[100]
Other	*	*	[75]	[100]	[67]	[50]	[31]
Remainder 1st Jud.D.							
Murder,Kidnapping	*	*	[0]	[50]	[100]	[100]	-
Violent	*	*	54	63	69	88	[100]
Property	*	*	53	59	61	58	[80]
Drugs	*	*	86	[25]	61	59	[88]
Sexual	*	*	77	90	75	100	[67]
Other	*	*	[80]	[50]	[40]	[40]	-
Remainder 3rd Jud.D.							
Murder,Kidnapping	*	*	[100]	[50]	[78]	[100]	[100]
Violent	*	*	73	75	75	75	[80]
Property	*	*	66	66	72	64	[75]
Drugs	*	*	71	58	70	49	[25]
Sexual	*	*	84	83	87	60	[0]
Other	*	*	68	75	64	50	[100]

* - Court Locations Not Included in 1978 Study

[] - Less Than 10 Observations

Source: Alaska Judicial Council/ISER

*** Draft: Do Not Cite or Quote ***

Plea Bargaining/Presumptive Sentencing Study

Table 13
 Charge Reduction: Arrest-Complaint
 By Type of Offense and Court Location
 (Percentage Distributions)

Anchorage, Fairbanks, Juneau

	8/15/74- 8/14/75	8/15/75- 8/14/76	WEIGHTED SAMPLE (86,87)
	-----	-----	-----
All Offenses	8	9	7
By Type of Offense			
Murder,Kidnapping	0	17	0
Violent	7	10	13
Property	11	14	7
Drugs	11	7	3
Sexual	8	11	7
Other	2	2	1
By Court Location			
Anchorage	10	10	7
Fairbanks	5	9	5
Juneau	2	8	10
Barrow	*	*	13
Nome	*	*	14
Kotzebue	*	*	17
Bethel	*	*	11
Remainder 1st	*	*	15
Remainder 3rd	*	*	2
All Locations			9
By Type of Offense			
Murder,Kidnapping			2
Violent			14
Property			8
Drugs			3
Sexual			7
Other			1

Source: Alaska Judicial Council/ISER

*** Draft: Do Not Cite or Quote ***

Table 13, continued
 Charge Reduction: Arrest-Complaint
 By Type of Offense and Court Location
 (Percentage Distributions)

	8/15/74- 8/14/75	8/15/75- 8/14/76	WEIGHTED SAMPLE (86,87)
	-----	-----	-----
Anchorage			
Murder,Kidnapping	0	27	0
Violent	10	11	14
Property	14	13	7
Drugs	10	7	3
Sexual	5	12	3
Other	2	2	2
Fairbanks			
Murder,Kidnapping	[0]	[0]	0
Violent	5	5	6
Property	5	16	6
Drugs	15	11	2
Sexual	[9]	[0]	12
Other	2	4	0
Juneau			
Murder,Kidnapping	-	-	[0]
Violent	[0]	15	19
Property	3	10	9
Drugs	[0]	[0]	5
Sexual	14	25	13
Other	0	0	0
Barrow			
Murder,Kidnapping	*	*	[0]
Violent	*	*	22
Property	*	*	21
Drugs	*	*	[0]
Sexual	*	*	0
Other	*	*	[0]
Nome			
Murder,Kidnapping	*	*	[0]
Violent	*	*	[22]
Property	*	*	20
Drugs	*	*	[0]
Sexual	*	*	11
Other	*	*	[0]

 * - Court Locations Not Included in 1978 Study
 [] - Less Than 10 Observations

Plea Bargaining/Presumptive Sentencing Study

Table 13, continued
 Charge Reduction: Arrest-Complaint
 By Type of Offense and Court Location
 (Percentage Distributions)

	8/15/74- 8/14/75	8/15/75- 8/14/76	WEIGHTED SAMPLE (86,87)
Kotzebue			
Murder,Kidnapping	*	*	[14]
Violent	*	*	46
Property	*	*	10
Drugs	*	*	[0]
Sexual	*	*	[11]
Other	*	*	[0]
Bethel			
Murder,Kidnapping	*	*	8
Violent	*	*	15
Property	*	*	11
Drugs	*	*	[0]
Sexual	*	*	12
Other	*	*	[0]
Remainder 1st Jud.D.			
Murder,Kidnapping	*	*	[0]
Violent	*	*	[0]
Property	*	*	23
Drugs	*	*	29
Sexual	*	*	6
Other	*	*	[0]
Remainder 3rd Jud.D.			
Murder,Kidnapping	*	*	[0]
Violent	*	*	8
Property	*	*	0
Drugs	*	*	[0]
Sexual	*	*	[0]
Other	*	*	[0]

 * - Court Locations Not Included in 1978 Study
 [] - Less Than 10 Observations

Source: Alaska Judicial Council/ISER

*** Draft: Do Not Cite or Quote ***

Plea Bargaining/Presumptive Sentencing Study

Table 14
 Charge Reduction: Complaint-First Appearance
 By Type of Offense and Court Location
 (Percentage Distributions)

	8/15/74-	8/15/75-	WEIGHTED
	8/14/75	8/14/76	SAMPLE (86,87)
	-----	-----	-----
All Offenses	1	1	0
By Type of Offense			
Murder,Kidnapping	0	6	0
Violent	2	1	0
Property	1	2	0
Drugs	2	0	0
Sexual	0	0	0
Other	0	0	0
By Court Location			
Anchorage	0	1	0
Fairbanks	2	2	0
Juneau	1	0	0
Barrow	*	*	0
Nome	*	*	0
Kotzebue	*	*	0
Bethel	*	*	0
Remainder 1st	*	*	0
Remainder 3rd	*	*	0
All Locations			0
By Type of Offense			
Murder,Kidnapping			0
Violent			0
Property			0
Drugs			0
Sexual			0
Other			0

Source: Alaska Judicial Council/ISER

*** Draft: Do Not Cite or Quote ***

Table 14, continued
 Charge Reduction: Complaint-First Appearance
 By Type of Offense and Court Location
 (Percentage Distributions)

	8/15/74- 8/14/75	8/15/75- 8/14/76	WEIGHTED SAMPLE (86,87)
Anchorage			
Murder,Kidnapping	0	9	0
Violent	1	0	0
Property	0	1	0
Drugs	4	0	0
Sexual	0	0	0
Other	0	0	0
Fairbanks			
Murder,Kidnapping	[0]	[0]	[0]
Violent	4	3	0
Property	3	3	0
Drugs	0	0	0
Sexual	0	[0]	0
Other	0	0	0
Juneau			
Murder,Kidnapping	-	-	[0]
Violent	4	0	0
Property	0	0	0
Drugs	[0]	[0]	0
Sexual	[0]	[0]	[0]
Other	0	0	[0]
Barrow			
Murder,Kidnapping	*	*	[0]
Violent	*	*	0
Property	*	*	0
Drugs	*	*	[0]
Sexual	*	*	[0]
Other	*	*	[0]
Nome			
Murder,Kidnapping	*	*	[0]
Violent	*	*	[0]
Property	*	*	[0]
Drugs	*	*	[0]
Sexual	*	*	[0]
Other	*	*	[0]

* - Court Locations Not Included in 1978 Study
 [] - Less Than 10 Observations

Table 14, continued
 Charge Reduction: Complaint-First Appearance
 By Type of Offense and Court Location
 (Percentage Distributions)

	8/15/74- 8/14/75	8/15/75- 8/14/76	WEIGHTED SAMPLE (86,87)
Kotzebue			
Murder,Kidnapping	*	*	[0]
Violent	*	*	[0]
Property	*	*	0
Drugs	*	*	[0]
Sexual	*	*	[0]
Other	*	*	[0]
Bethel			
Murder,Kidnapping	*	*	[0]
Violent	*	*	0
Property	*	*	0
Drugs	*	*	[0]
Sexual	*	*	[0]
Other	*	*	[0]
Remainder 1st Jud.D.			
Murder,Kidnapping	*	*	[0]
Violent	*	*	0
Property	*	*	0
Drugs	*	*	0
Sexual	*	*	0
Other	*	*	[0]
Remainder 3rd Jud.D.			
Murder,Kidnapping	*	*	[0]
Violent	*	*	[0]
Property	*	*	[0]
Drugs	*	*	[0]
Sexual	*	*	[0]
Other	*	*	[0]

 * - Court Locations Not Included in 1978 Study
 [] - Less Than 10 Observations

Source: Alaska Judicial Council/ISER

*** Draft: Do Not Cite or Quote ***

Plea Bargaining/Presumptive Sentencing Study

Table 15
 Charge Reduction: First Appearance-Indictment
 By Type of Offense and Court Location
 (Percentage Distributions)

Anchorage, Fairbanks, Juneau

	8/15/74- 8/14/75	8/15/75- 8/14/76	WEIGHTED SAMPLE (86,87)
	-----	-----	-----
All Offenses	15	13	14
By Type of Offense			
Murder,Kidnapping	5	6	20
Violent	16	15	29
Property	18	16	9
Drugs	14	4	8
Sexual	11	7	7
Other	10	9	8
By Court Location			
Anchorage	18	16	19
Fairbanks	11	8	2
Juneau	5	7	8
Barrow	*	*	11
Nome	*	*	0
Kotzebue	*	*	0
Bethel	*	*	12
Remainder 1st	*	*	7
Remainder 3rd	*	*	0
All Locations			14
By Type of Offense			
Murder,Kidnapping			15
Violent			23
Property			8
Drugs			6
Sexual			7
Other			6

Source: Alaska Judicial Council/ISER

*** Draft: Do Not Cite or Quote ***

Plea Bargaining/Presumptive Sentencing Study

Table 15, continued
 Charge Reduction: First Appearance-Indictment
 By Type of Offense and Court Location
 (Percentage Distributions)

	8/15/74- 8/14/75	8/15/75- 8/14/76	WEIGHTED SAMPLE (86,87)
Anchorage			
Murder,Kidnapping	8	0	19
Violent	19	18	37
Property	20	20	13
Drugs	15	8	13
Sexual	18	10	11
Other	14	12	10
Fairbanks			
Murder,Kidnapping	[0]	[14]	[28]
Violent	11	11	2
Property	16	9	0
Drugs	8	0	0
Sexual	9	[0]	0
Other	6	4	9
Juneau			
Murder,Kidnapping	-	-	[0]
Violent	4	6.7	34
Property	7	14	6
Drugs	[25]	[0]	0
Sexual	[0]	[0]	[0]
Other	0	0	[0]
Barrow			
Murder,Kidnapping	*	*	[0]
Violent	*	*	24
Property	*	*	0
Drugs	*	*	[0]
Sexual	*	*	33
Other	*	*	[0]
Nome			
Murder,Kidnapping	*	*	[0]
Violent	*	*	[0]
Property	*	*	[0]
Drugs	*	*	[0]
Sexual	*	*	[0]
Other	*	*	[0]

* - Court Locations Not Included in 1978 Study
 [] - Less Than 10 Observations

Source: Alaska Judicial Council/ISER

*** Draft: Do Not Cite or Quote ***

Plea Bargaining/Presumptive Sentencing Study

Table 16
 Charge Reduction: Indictment-Final Disposition
 By Type of Offense and Court Location
 (Percentage Distributions)

Anchorage, Fairbanks, Juneau	8/15/74-	8/15/75-	WEIGHTED
	8/14/75	8/14/76	SAMPLE (86,87)
	-----	-----	-----
All Offenses	8	5	7
By Type of Offense			
Murder,Kidnapping	29	11	24
Violent	10	8	12
Property	9	4	2
Drugs	2	12	5
Sexual	6	4	12
Other	4	2	6
By Court Location			
Anchorage	6	3	6
Fairbanks	10	8	9
Juneau	18	13	9
Barrow	*	*	13
Nome	*	*	24
Kotzebue	*	*	28
Bethel	*	*	16
Remainder 1st	*	*	27
Remainder 3rd	*	*	13
All Locations			10
By Type of Offense			
Murder,Kidnapping			26
Violent			17
Property			5
Drugs			5
Sexual			17
Other			6

Source: Alaska Judicial Council/ISER

*** Draft: Do Not Cite or Quote ***

Table 16, continued
 Charge Reduction: Indictment-Final Disposition
 By Type of Offense and Court Location
 (Percentage Distributions)

	8/15/74- 8/14/75	8/15/75- 8/14/76	WEIGHTED SAMPLE (86,87)
	-----	-----	-----
Anchorage			
Murder,Kidnapping	[25]	[0]	26
Violent	6	6	8
Property	8	1	3
Drugs	4	12	4
Sexual	6	0	10
Other	2	1	6
Fairbanks			
Murder,Kidnapping	[33]	[29]	[14]
Violent	11	10	20
Property	8	9	2
Drugs	0	11	3
Sexual	9	[0]	18
Other	7	1	[0]
Juneau			
Murder,Kidnapping	-	-	[33]
Violent	28	20	20
Property	22	10	0
Drugs	[0]	[13]	7
Sexual	[0]	[33]	11
Other	6	7	14
Barrow			
Murder,Kidnapping	*	*	[0]
Violent	*	*	29
Property	*	*	6
Drugs	*	*	[0]
Sexual	*	*	17
Other	*	*	[0]
Nome			
Murder,Kidnapping	*	*	[50]
Violent	*	*	[20]
Property	*	*	[38]
Drugs	*	*	[0]
Sexual	*	*	[25]
Other	*	*	[0]

* - Court Locations Not Included in 1978 Study

[] - Less Than 10 Observations

Source: Alaska Judicial Council/ISER

*** Draft: Do Not Cite or Quote ***

Table 16, continued
 Charge Reduction: Indictment-Final Disposition
 By Type of Offense and Court Location
 (Percentage Distributions)

	8/15/74- 8/14/75	8/15/75- 8/14/76	WEIGHTED SAMPLE (86,87)
Kotzebue			
Murder,Kidnapping	*	*	[20]
Violent	*	*	[56]
Property	*	*	19
Drugs	*	*	[0]
Sexual	*	*	[25]
Other	*	*	[100]
Bethel			
Murder,Kidnapping	*	*	[44]
Violent	*	*	25
Property	*	*	8
Drugs	*	*	[0]
Sexual	*	*	[17]
Other	*	*	[0]
Remainder 1st Jud.D.			
Murder,Kidnapping	*	*	[0]
Violent	*	*	23
Property	*	*	6
Drugs	*	*	25
Sexual	*	*	[16]
Other	*	*	-
Remainder 3rd Jud.D.			
Murder,Kidnapping	*	*	[33]
Violent	*	*	[29]
Property	*	*	[0]
Drugs	*	*	[0]
Sexual	*	*	[50]
Other	*	*	[0]

 * - Court Locations Not Included in 1978 Study
 [] - Less Than 10 Observations

Source: Alaska Judicial Council/ISER

*** Draft: Do Not Cite or Quote ***

Plea Bargaining/Presumptive Sentencing Study

Table 17
Case Summary: All Types of Offenses
(Percentage Distributions)

Anchorage, Fairbanks, Juneau

	8/15/74- 8/14/75	8/15/75- 8/14/76	1984	1985	1986	1987	WEIGHTED SAMPLE (86,87)
Accptd & Conv. as Charged	24	24	25	27	28	29	29
Chg. Stands, Conv. Lssr. Chg.	16	10	10	11	12	13	13
Chg. Stands, Bargain			1	1	2	3	3
Chg. Stands, Not Guilty Main Chg.							
Guilty 1+ Other Chgs.	0	1	0	0	0	0	0
Not Guilty of Any Charges	3	1	1	1	1	1	1
Chg. Stands, Dism. by Pros.							
Guilty 1+ Other Chgs.	1	12	3	3	4	4	5
Not Guilty of Any Charges	41	32	16	16	11	9	9
Chg. Stands, Other Outcome			3	3	3	3	2
Chg.Red, Convicted of Chg.	4	4	4	4	4	4	4
Chg.Red, Convicted of Lesser Chg.	1	0	1	1	0	1	1
Chg. Red, Bargain			0	0	0	0	0
Chgr. Red., Not Guilty				0			0
Chg.Red, Dism. by Pros.							
Guilty 1+ Other Chgs.	-	1	0	0	1	0	1
Not Guilty of Any Charges	3	3	2	3	3	2	1
Chg. Red, Other Outcome			1	0	1	1	0
Charge Declined							
Guilty 1+ Other Chgs.	0	3	2	1	2	1	2
Not Guilty of Any Charges	9	8	31	29	30	30	29
	-----	-----	-----	-----	-----	-----	-----
	100	100	100	100	100	100	100

Source: Alaska Judicial Council/ISER

*** Draft: Do Not Cite or Quote ***

Plea Bargaining/Presumptive Sentencing Study

Table 17a
Case Summary: All Locations, All Types of Offenses
(Percentage Distributions)

	1984	1985	1986	1987	WEIGHTED SAMPLE (86,87)
Accptd & Conv. as Charged	23	22	23	23	27
Chg. Stands, Conv. Lssr. Chg.	9	10	11	13	11
Chg. Stands, Bargain	1	1	2	3	2
Chg. Stands, Not Guilty Main Chg.					
Guilty 1+ Other Chgs.	0	0	0	0	0
Not Guilty of Any Charges	1	1	1	1	1
Chg. Stands, Dism. by Pros.					
Guilty 1+ Other Chgs.	4	3	4	5	5
Not Guilty of Any Charges	16	14	11	9	9
Chg. Stands, Other Outcome	3	4	4	3	3
Chg.Red, Convicted of Chg.	6	6	6	6	5
Chg.Red, Convicted of Lesser Chg.	1	1	0	1	1
Chg. Red, Bargain	0	0	0	0	0
Chgr. Red., Not Guilty	0	0	0	0	0
Chg.Red, Dism. by Pros.					
Guilty 1+ Other Chgs.	0	0	1	0	1
Not Guilty of Any Charges	3	3	2	2	2
Chg. Red, Other Outcome	1	1	1	1	0
Charge Declined					
Guilty 1+ Other Chgs.	2	2	2	2	2
Not Guilty of Any Charges	31	32	33	32	33
	-----	-----	-----	-----	-----
	100	100	100	100	100

Source: Alaska Judicial Council/ISER

*** Draft: Do Not Cite or Quote ***

Plea Bargaining/Presumptive Sentencing Study

Table 18
Case Summary: Murder & Kidnapping
(Percentage Distributions)

Anchorage, Fairbanks, Juneau

	8/15/74- 8/14/75	8/15/75- 8/14/76	1984	1985	1986	1987	WEIGHTED SAMPLE (86,87)
Accptd & Conv. as Charged	32	44	34	39	43	34	32
Chg. Stands, Conv. Lssr. Chg.	27	11	13	11	23	10	27
Chg. Stands, Bargain			11	3		5	1
Chg. Stands, Not Guilty Main Chg.							
Guilty 1+ Other Chgs.		6		6			
Not Guilty of Any Charges	5	6	11	3	3	2	4
Chg. Stands, Dism. by Pros.							
Guilty 1+ Other Chgs.			3	8		27	14
Not Guilty of Any Charges	32	17	5	6	10	2	2
Chg. Stands, Other Outcome			3	3	3	2	
Chg.Red, Convicted of Chg.		11			3		2
Chg.Red, Convicted of Lesser Chg.					3		
Chg. Red, Bargain							
Chgr. Red., Not Guilty							
Chg.Red, Dism. by Pros.							
Guilty 1+ Other Chgs.		6					
Not Guilty of Any Charges							
Chg. Red, Other Outcome							
Charge Declined							
Guilty 1+ Other Chgs.	5			3		7	4
Not Guilty of Any Charges			21	19	10	10	14
	-----	-----	-----	-----	-----	-----	-----
	100	100	100	100	100	100	100

Source: Alaska Judicial Council/ISER

*** Draft: Do Not Cite or Quote ***

Plea Bargaining/Presumptive Sentencing Study

Table 18a
Case Summary: All Locations, Murder & Kidnapping
(Percentage Distributions)

	1984	1985	1986	1987	WEIGHTED SAMPLE (86,87)
Accptd & Conv. as Charged	22	30	27	24	21
Chg. Stands, Conv. Lssr. Chg.	16	7	26	14	22
Chg. Stands, Bargain	9	5	2	6	3
Chg. Stands, Not Guilty Main Chg.					
Guilty 1+ Other Chgs.		4		1	
Not Guilty of Any Charges	8	1	8	1	3
Chg. Stands, Dism. by Pros.					
Guilty 1+ Other Chgs.	8	13	7	22	19
Not Guilty of Any Charges	3	5	5	1	2
Chg. Stands, Other Outcome	4	5	8	4	3
Chg.Red, Convicted of Chg.	3	9	2	1	2
Chg.Red, Convicted of Lesser Chg.	1		3	1	2
Chg. Red, Bargain			2		
Chgr. Red., Not Guilty					
Chg.Red, Dism. by Pros.					
Guilty 1+ Other Chgs.					
Not Guilty of Any Charges		1			
Chg. Red, Other Outcome					
Charge Declined					
Guilty 1+ Other Chgs.		4	3	7	5
Not Guilty of Any Charges	27	15	8	17	19
	-----	-----	-----	-----	-----
	100	100	100	100	100

Source: Alaska Judicial Council/ISER

*** Draft: Do Not Cite or Quote ***

Plea Bargaining/Presumptive Sentencing Study

Table 19
Case Summary: Other Violent Offenses
(Percentage Distributions)

Anchorage, Fairbanks, Juneau

	8/15/74- 8/14/75	8/15/75- 8/14/76	1984	1985	1986	1987	WEIGHTED SAMPLE (86,87)
Acptd & Conv. as Charged	22	20	17	21	16	15	15
Chg. Stands, Conv. Lssr. Chg.	16	14	19	18	20	28	25
Chg. Stands, Bargain			1		1	2	2
Chg. Stands, Not Guilty Main Chg.							
Guilty 1+ Other Chgs.	0	1	0		0		0
Not Guilty of Any Charges	3	2	1	1	1	1	1
Chg. Stands, Dism. by Pros.							
Guilty 1+ Other Chgs.	1	10	4	2	4	2	6
Not Guilty of Any Charges	41	34	12	10	13	8	8
Chg. Stands, Other Outcome			3	5	3	4	3
Chg.Red, Convicted of Chg.	2	4	7	6	5	5	5
Chg.Red, Convicted of Lesser Chg.	2	1	2	2	1	2	3
Chg. Red, Bargain					0	0	1
Chgr. Red., Not Guilty					1		0
Chg.Red, Dism. by Pros.							
Guilty 1+ Other Chgs.		1	1	1	2	1	1
Not Guilty of Any Charges	3	4	4	5	5	3	3
Chg. Red, Other Outcome			1	1	1	1	1
Charge Declined							
Guilty 1+ Other Chgs.		1	0	2	2	1	3
Not Guilty of Any Charges	9	10	29	28	25	27	24
	-----	-----	-----	-----	-----	-----	-----
	100	100	100	100	100	100	100

Source: Alaska Judicial Council/ISER

*** Draft: Do Not Cite or Quote ***

Plea Bargaining/Presumptive Sentencing Study

Table 19a
Case Summary: All Locations, Other Violent Offenses
(Percentage Distributions)

	1984	1985	1986	1987	WEIGHTED SAMPLE (86,87)
	-----	-----	-----	-----	-----
Accptd & Conv. as Charged	16	17	15	14	17
Chg. Stands, Conv. Lssr. Chg.	17	16	18	23	22
Chg. Stands, Bargain	1		1	2	2
Chg. Stands, Not Guilty Main Chg.					
Guilty 1+ Other Chgs.	0		0	0	0
Not Guilty of Any Charges	1	1	1	1	1
Chg. Stands, Dism. by Pros.					
Guilty 1+ Other Chgs.	3	2	4	3	4
Not Guilty of Any Charges	10	8	9	6	8
Chg. Stands, Other Outcome	3	4	3	3	2
Chg.Red, Convicted of Chg.	9	10	9	9	7
Chg.Red, Convicted of Lesser Chg.	2	2	1	2	2
Chg. Red, Bargain	0		0	0	1
Chgr. Red., Not Guilty	1	0	0	0	1
Chg.Red, Dism. by Pros.					
Guilty 1+ Other Chgs.	1	1	1	1	1
Not Guilty of Any Charges	4	5	5	3	3
Chg. Red, Other Outcome	1	2	2	1	0
Charge Declined					
Guilty 1+ Other Chgs.	2	2	3	2	4
Not Guilty of Any Charges	30	29	28	29	26
	-----	-----	-----	-----	-----
	100	100	100	100	100

Source: Alaska Judicial Council/ISER

*** Draft: Do Not Cite or Quote ***

Plea Bargaining/Presumptive Sentencing Study

Table 20
Case Summary: Property Offenses
(Percentage Distributions)

Anchorage, Fairbanks, Juneau

	8/15/74- 8/14/75	8/15/75- 8/14/76	1984	1985	1986	1987	WEIGHTED SAMPLE (86,87)
	-----	-----	-----	-----	-----	-----	-----
Accptd & Conv. as Charged	19	23	25	31	32	38	35
Chg. Stands, Conv. Lssr. Chg.	19	13	9	10	9	9	7
Chg. Stands, Bargain			0	1	2	2	2
Chg. Stands, Not Guilty Main Chg.							
Guilty 1+ Other Chgs.	2	1		0	0	0	0
Not Guilty of Any Charges	1	8	0	0	1	0	1
Chg. Stands, Dism. by Pros.							
Guilty 1+ Other Chgs.			2	2	2	3	3
Not Guilty of Any Charges	41	33	19	20	12	7	10
Chg. Stands, Other Outcome			3	2	3	2	1
Chg.Red, Convicted of Chg.	5	7	4	4	4	4	4
Chg.Red, Convicted of Lesser Chg.	2	1	1	0		0	
Chg. Red, Bargain					0		0
Chgr. Red., Not Guilty			0		0	0	0
Chg.Red, Dism. by Pros.							
Guilty 1+ Other Chgs.		2	0		0	0	0
Not Guilty of Any Charges	4	5	3	2	3	2	1
Chg. Red, Other Outcome			1	0	0	1	1
Charge Declined							
Guilty 1+ Other Chgs.	0	3	2	1	1	1	3
Not Guilty of Any Charges	8	6	32	26	29	30	32
	-----	-----	-----	-----	-----	-----	-----
	100	100	100	100	100	100	100

Source: Alaska Judicial Council/ISER

*** Draft: Do Not Cite or Quote ***

Plea Bargaining/Presumptive Sentencing Study

Table 20a
Case Summary: All Locations, Property Offenses
(Percentage Distributions)

	1984	1985	1986	1987	WEIGHTED SAMPLE (86,87)
Accptd & Conv. as Charged	23	25	24	29	31
Chg. Stands, Conv. Lssr. Chg.	7	9	8	9	7
Chg. Stands, Bargain	0	1	2	2	2
Chg. Stands, Not Guilty Main Chg.					
Guilty 1+ Other Chgs.		0	0	0	0
Not Guilty of Any Charges	0	0	1	0	0
Chg. Stands, Dism. by Pros.					
Guilty 1+ Other Chgs.	3	3	3	4	4
Not Guilty of Any Charges	19	17	13	9	9
Chg. Stands, Other Outcome	3	3	3	3	2
Chg.Red, Convicted of Chg.	7	6	6	7	5
Chg.Red, Convicted of Lesser Chg.	1	0	0	0	0
Chg. Red, Bargain			0	0	0
Chgr. Red., Not Guilty	0	0	0	0	0
Chg.Red, Dism. by Pros.					
Guilty 1+ Other Chgs.	0	0	0	0	1
Not Guilty of Any Charges	4	4	3	3	2
Chg. Red, Other Outcome	1	1	1	1	1
Charge Declined					
Guilty 1+ Other Chgs.	2	2	2	2	2
Not Guilty of Any Charges	31	30	34	32	35
	-----	-----	-----	-----	-----
	100	100	100	100	100

Source: Alaska Judicial Council/ISER

*** Draft: Do Not Cite or Quote ***

Plea Bargaining/Presumptive Sentencing Study

Table 21
Case Summary: Drug Offenses
(Percentage Distributions)

Anchorage, Fairbanks, Juneau

	8/15/74- 8/14/75	8/15/75- 8/14/76	1984	1985	1986	1987	WEIGHTED SAMPLE (86,87)
	-----	-----	-----	-----	-----	-----	-----
Accptd & Conv. as Charged	23	33	34	30	36	34	37
Chg. Stands, Conv. Lssr. Chg.	13	9	4	8	7	11	9
Chg. Stands, Bargain			0	1	2	6	5
Chg. Stands, Not Guilty Main Chg.							
Guilty 1+ Other Chgs.		4	0	1	0		
Not Guilty of Any Charges	2			1		2	
Chg. Stands, Dism. by Pros.							
Guilty 1+ Other Chgs.	2	7	6	5	9	8	9
Not Guilty of Any Charges	40	32	22	22	10	15	10
Chg. Stands, Other Outcome			5	2	5	2	3
Chg.Red, Convicted of Chg.	4	2		3	2	2	2
Chg.Red, Convicted of Lesser Chg.	2	2	1		0	1	
Chg. Red, Bargain					0		
Chgr. Red., Not Guilty				0			
Chg.Red, Dism. by Pros.							
Guilty 1+ Other Chgs.		2		0	0		
Not Guilty of Any Charges	4	2	1	3	1	1	3
Chg. Red, Other Outcome							
Charge Declined							
Guilty 1+ Other Chgs.		4	2	1	2		1
Not Guilty of Any Charges	9	5	24	22	25	19	23
	-----	-----	-----	-----	-----	-----	-----
	100	100	100	100	100	100	100

Source: Alaska Judicial Council/ISER

*** Draft: Do Not Cite or Quote ***

Plea Bargaining/Presumptive Sentencing Study

Table 21a
Case Summary: All Locations, Drug Offenses
(Percentage Distributions)

	1984	1985	1986	1987	WEIGHTED SAMPLE (86,87)
Accptd & Conv. as Charged	31	23	35	30	40
Chg. Stands, Conv. Lssr. Chg.	4	7	7	10	7
Chg. Stands, Bargain	0	1	3	7	4
Chg. Stands, Not Guilty Main Chg.					
Guilty 1+ Other Chgs.	0	0	0		
Not Guilty of Any Charges	1	2	0	1	
Chg. Stands, Dism. by Pros.					
Guilty 1+ Other Chgs.	7	6	9	10	9
Not Guilty of Any Charges	24	23	14	15	12
Chg. Stands, Other Outcome	4	3	5	3	3
Chg.Red, Convicted of Chg.	2	3	2	2	2
Chg.Red, Convicted of Lesser Chg.	0	0	0	1	0
Chg. Red, Bargain			0		
Chgr. Red., Not Guilty		0			
Chg.Red, Dism. by Pros.					
Guilty 1+ Other Chgs.		0	0	0	
Not Guilty of Any Charges	1	3	1	1	2
Chg. Red, Other Outcome	0	0			
Charge Declined					
Guilty 1+ Other Chgs.	4	2	1	1	1
Not Guilty of Any Charges	22	27	22	19	21
	-----	-----	-----	-----	-----
	100	100	100	100	100

Source: Alaska Judicial Council/ISER

*** Draft: Do Not Cite or Quote ***

Plea Bargaining/Presumptive Sentencing Study

Table 22
Case Summary: Sexual Offenses
(Percentage Distributions)

Anchorage, Fairbanks, Juneau

	8/15/74- 8/14/75	8/15/75- 8/14/76	1984	1985	1986	1987	WEIGHTED SAMPLE (86,87)
Accptd & Conv. as Charged	21	20	24	22	22	19	22
Chg. Stands, Conv. Lssr. Chg.	13	3	7	5	7	7	9
Chg. Stands, Bargain			2	2	4	5	5
Chg. Stands, Not Guilty Main Chg.							
Guilty 1+ Other Chgs.			1	1			
Not Guilty of Any Charges		3	1	3	1	1	1
Chg. Stands, Dism. by Pros.							
Guilty 1+ Other Chgs.			4	2	4	5	5
Not Guilty of Any Charges	49	46	8	8	7	8	6
Chg. Stands, Other Outcome			3	5	3	5	4
Chg.Red, Convicted of Chg.	8	6	4	4	2	3	5
Chg.Red, Convicted of Lesser Chg.			0	0			
Chg. Red, Bargain			0	0			
Chgr. Red., Not Guilty							
Chg.Red, Dism. by Pros.							
Guilty 1+ Other Chgs.			0		1		2
Not Guilty of Any Charges		6	1	1	0	1	
Chg. Red, Other Outcome						1	
Charge Declined							
Guilty 1+ Other Chgs.		3	1	2	2	1	
Not Guilty of Any Charges	10	14	43	45	48	46	41
	-----	-----	-----	-----	-----	-----	-----
	100	100	100	100	100	100	100

Source: Alaska Judicial Council/ISER

*** Draft: Do Not Cite or Quote ***

Plea Bargaining/Presumptive Sentencing Study

Table 22a
Case Summary: All Locations, Sexual Offenses
(Percentage Distributions)

	1984	1985	1986	1987	WEIGHTED SAMPLE (86,87)
Accptd & Conv. as Charged	22	18	18	16	17
Chg. Stands, Conv. Lssr. Chg.	10	7	11	9	8
Chg. Stands, Bargain	1	1	2	4	3
Chg. Stands, Not Guilty Main Chg.					
Guilty 1+ Other Chgs.	0	1			
Not Guilty of Any Charges	2	3	1	1	1
Chg. Stands, Dism. by Pros.					
Guilty 1+ Other Chgs.	4	3	3	5	2
Not Guilty of Any Charges	8	8	6	7	6
Chg. Stands, Other Outcome	3	5	3	4	5
Chg.Red, Convicted of Chg.	4	5	6	4	7
Chg.Red, Convicted of Lesser Chg.	0	1	0	0	1
Chg. Red, Bargain	0	0			
Chgr. Red., Not Guilty	1			0	
Chg.Red, Dism. by Pros.					
Guilty 1+ Other Chgs.	0		0		1
Not Guilty of Any Charges	1	1	1	1	
Chg. Red, Other Outcome		0	0	0	
Charge Declined					
Guilty 1+ Other Chgs.	2	1	2	1	1
Not Guilty of Any Charges	42	47	47	49	49
	-----	-----	-----	-----	-----
	100	100	100	100	100

Source: Alaska Judicial Council/ISER

*** Draft: Do Not Cite or Quote ***

Plea Bargaining/Presumptive Sentencing Study

Table 23
Case Summary: Other Offenses
(Percentage Distributions)

Anchorage, Fairbanks, Juneau

	8/15/74- 8/14/75	8/15/75- 8/14/76	1984	1985	1986	1987	WEIGHTED SAMPLE (86,87)
Accptd & Conv. as Charged	36	28	26	31	35	29	34
Chg. Stands, Conv. Lssr. Chg.	7	4	3	4	13	11	9
Chg. Stands, Bargain					3	2	
Chg. Stands, Not Guilty Main Chg.							
Guilty 1+ Other Chgs.			1			1	
Not Guilty of Any Charges	3	1	3	2	1	1	
Chg. Stands, Dism. by Pros.							
Guilty 1+ Other Chgs.	3	21	2	2	1	3	2
Not Guilty of Any Charges	39	28	26	20	14	11	15
Chg. Stands, Other Outcome			4	1	6	4	5
Chg.Red, Convicted of Chg.	1	0	6	3		2	1
Chg.Red, Convicted of Lesser Chg.							
Chg. Red, Bargain							
Chgr. Red., Not Guilty							
Chg.Red, Dism. by Pros.							
Guilty 1+ Other Chgs.		1				1	1
Not Guilty of Any Charges	1	1	4	4		1	
Chg. Red, Other Outcome			1				
Charge Declined							
Guilty 1+ Other Chgs.		7	3				
Not Guilty of Any Charges	11	8	22	31	27	36	33
	-----	-----	-----	-----	-----	-----	-----
	101	100	100	100	100	100	100

Source: Alaska Judicial Council/ISER

*** Draft: Do Not Cite or Quote ***

Plea Bargaining/Presumptive Sentencing Study

Table 23a
Case Summary: All Locations, Other Offenses
(Percentage Distributions)

	1984	1985	1986	1987	WEIGHTED SAMPLE (86,87)
Accptd & Conv. as Charged	26	24	33	23	34
Chg. Stands, Conv. Lssr. Chg.	5	5	8	11	7
Chg. Stands, Bargain	1		3	2	2
Chg. Stands, Not Guilty Main Chg.					
Guilty 1+ Other Chgs.	1			1	
Not Guilty of Any Charges	2	2	1	1	
Chg. Stands, Dism. by Pros.					
Guilty 1+ Other Chgs.	2	3	1	3	1
Not Guilty of Any Charges	20	14	12	14	12
Chg. Stands, Other Outcome	4	2	5	3	3
Chg.Red, Convicted of Chg.	6	4	3	3	1
Chg.Red, Convicted of Lesser Chg.	1				
Chg. Red, Bargain					
Chgr. Red., Not Guilty					
Chg.Red, Dism. by Pros.					
Guilty 1+ Other Chgs.		1		1	1
Not Guilty of Any Charges	3	3		2	
Chg. Red, Other Outcome	1		1		
Charge Declined					
Guilty 1+ Other Chgs.	3	2	1	3	4
Not Guilty of Any Charges	27	41	33	36	35
	-----	-----	-----	-----	-----
	100	100	100	100	100

Source: Alaska Judicial Council/ISER

*** Draft: Do Not Cite or Quote ***