

# FACT SHEET

Revised 09/09/2024



Alaska Justice Information Center  
UNIVERSITY of ALASKA ANCHORAGE

www.uaa.alaska.edu/ajic

August 2024 – AJIC 24-03

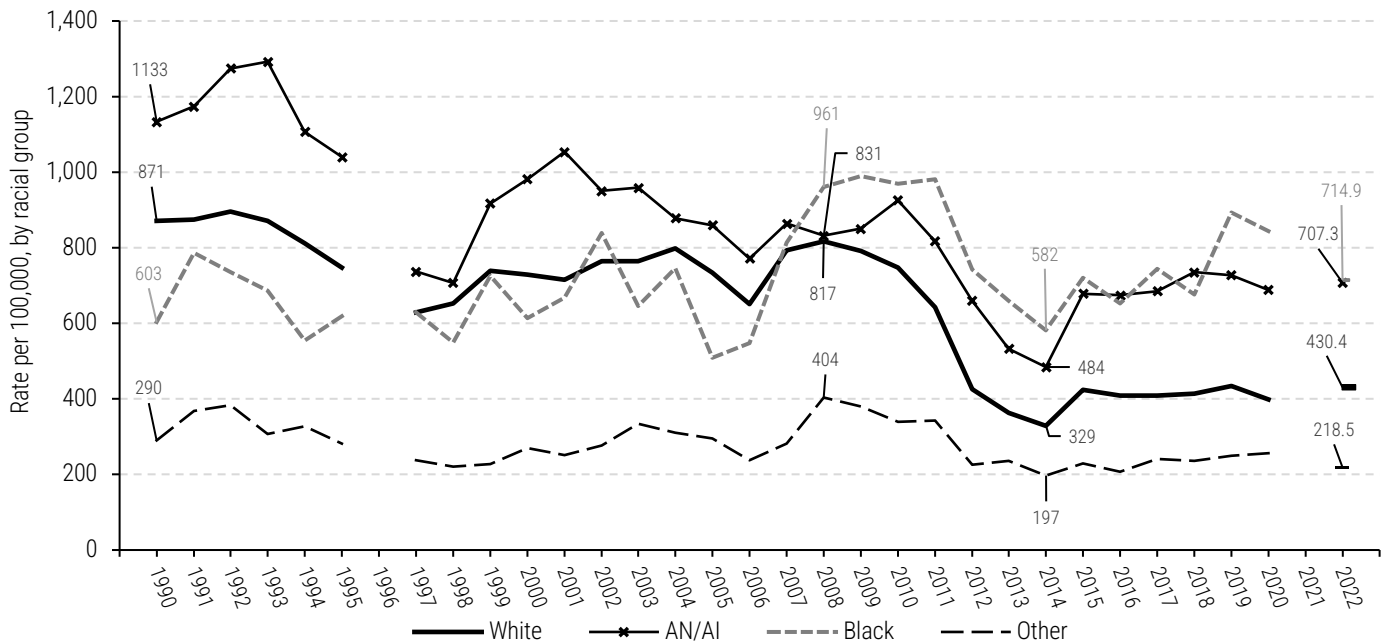
## Alaska DUI Arrest Rates, by Race: 1990-2022

Rus'sel Sampson, M.P.A., Research Professional | Andrew Gonzalez, B.A., Research Professional

This fact sheet explores Alaska Driving Under the Influence (DUI) (AS 28.35.030)<sup>1</sup> arrest rate trends by racial group for the period 1990 to 2022 (the most recent year for which DUI arrest data were available). Race-specific DUI arrest rates were calculated as the number of arrests of White, Alaska Native/American Indian (AN/AI), Black, and all other races,

per 100,000 population for each racial group for each year from 1990 to 2022. DUI arrest data were obtained from the Alaska Department of Public Safety's [Crime in Alaska](#) reports. Alaska population data were obtained from the [Alaska Department of Labor and Workforce Development](#).

Figure 1. Alaska DUI arrest rates, by race: 1990-2022.



### Notes

DUI Arrest data source: Alaska Department of Public Safety, *Crime in Alaska* (1990-2022).  
Population data source: Alaska Department of Labor and Workforce Development.  
DUI arrest data excluded for the year 1996 due to source data inaccuracies.  
DUI arrest data excluded for the year 2021 due to source data reporting inconsistency.

Figure 1 depicts annual DUI arrest rates, by race, for the period 1990 through 2022 (Note: DUI arrest data are excluded for the year 1996 due to source data inaccuracies and 2021 due to source data reporting inconsistency). Overall, the White DUI arrest rate decreased by -50.6%, the AN/AI DUI arrest rate decreased by -37.6%, and the "other" race arrest rate decreased by -24.6% between 1990 and 2022. However, the Black DUI arrest rate increased by 18.6% over the same period. On average, the AN/AI DUI

arrest rate (861.2 per 100,000) was highest among all racial groups between 1990 and 2022, followed by the Black arrest rate (722.6 per 100,000), the White arrest rate (647.6 per 100,000), and the “other” race arrest rate (279.4 per 100,000).

A marked decline in DUI arrest rates occurred between 2008 and 2014. The White DUI arrest rate was 816.9 per 100,000 in 2008 and decreased to 328.6 per 100,000 in 2014 (-59.8%). The AN/AI arrest rate was 831.3 per 100,000 in 2008 and decreased to 484.3 per 100,000 in 2014 (-41.7%). The Black arrest rate was 960.7 per 100,000 in 2008 and decreased to 581.8 per 100,000 in 2014 (-39.4%). The “other” race arrest rate was 403.6 per 100,000 in 2008 and decreased to 196.9 per 100,000 in 2014 (-51.2%). Following a moderate increase in 2015, DUI arrest rates leveled off through 2022, with a slight uptick in the Black arrest rate over time.

**Table 1.** Alaska DUI arrest rates, by race: 1990-2022

Year	Rate per 100,000 population, by racial group			
	White	AN/AI	Black	Other
1990	871.5	1133.4	602.7	289.7
1991	873.8	1174.2	786.2	368.5
1992	895.7	1274.1	735.9	382.5
1993	871.1	1292.3	685.7	307.8
1994	812.3	1107.3	555.0	328.0
1995	746.7	1039.9	619.3	281.5
1996				
1997	628.9	736.4	629.3	238.1
1998	652.2	707.2	549.3	220.1
1999	739.1	917.4	726.2	228.0
2000	728.2	981.2	613.3	269.8
2001	715.7	1053.2	667.3	251.6
2002	764.8	950.2	839.6	275.8
2003	764.9	958.5	645.3	333.9
2004	798.9	878.5	745.8	309.6
2005	733.0	859.6	508.8	294.4
2006	651.6	771.5	548.0	238.2
2007	793.7	863.8	813.8	282.4
2008	816.9	831.3	960.7	403.6
2009	790.9	850.2	989.5	380.4
2010	747.5	925.8	969.6	339.5
2011	642.4	817.6	980.7	343.1
2012	426.1	660.1	742.9	225.1
2013	362.3	533.1	659.3	235.6
2014	328.6	484.3	581.8	196.9
2015	423.8	678.1	720.3	229.0
2016	409.3	674.3	652.1	207.5
2017	408.1	685.3	744.3	240.7
2018	414.1	735.0	675.7	235.5
2019	434.8	727.3	892.4	249.5
2020	399.0	688.2	844.7	256.5
2021				
2022	430.4	707.3	714.9	218.5

**Notes**

DUI Arrest data source: Alaska Department of Public Safety, *Crime in Alaska* (1990-2022).

Population data source: Alaska Department of Labor and Workforce Development.

DUI arrest data excluded for the year 1996 due to source data inaccuracies.

DUI arrest data excluded for the year 2021 due to source data reporting inconsistency.



1 Under Alaska Statute 25.35.030, a person commits the crime of driving while under the influence of an alcoholic beverage, inhalant, or controlled substance if the person operates or drives a motor vehicle or operates an aircraft or a watercraft while under the influence of an alcoholic beverage, intoxicating liquor, inhalant, or any controlled substance, singly, or in combination.