

# FACT SHEET

Revised 09/09/2024



Alaska Justice  
Information Center  
UNIVERSITY of ALASKA ANCHORAGE

www.uaa.alaska.edu/ajic

August 2024 – AJIC 24-02

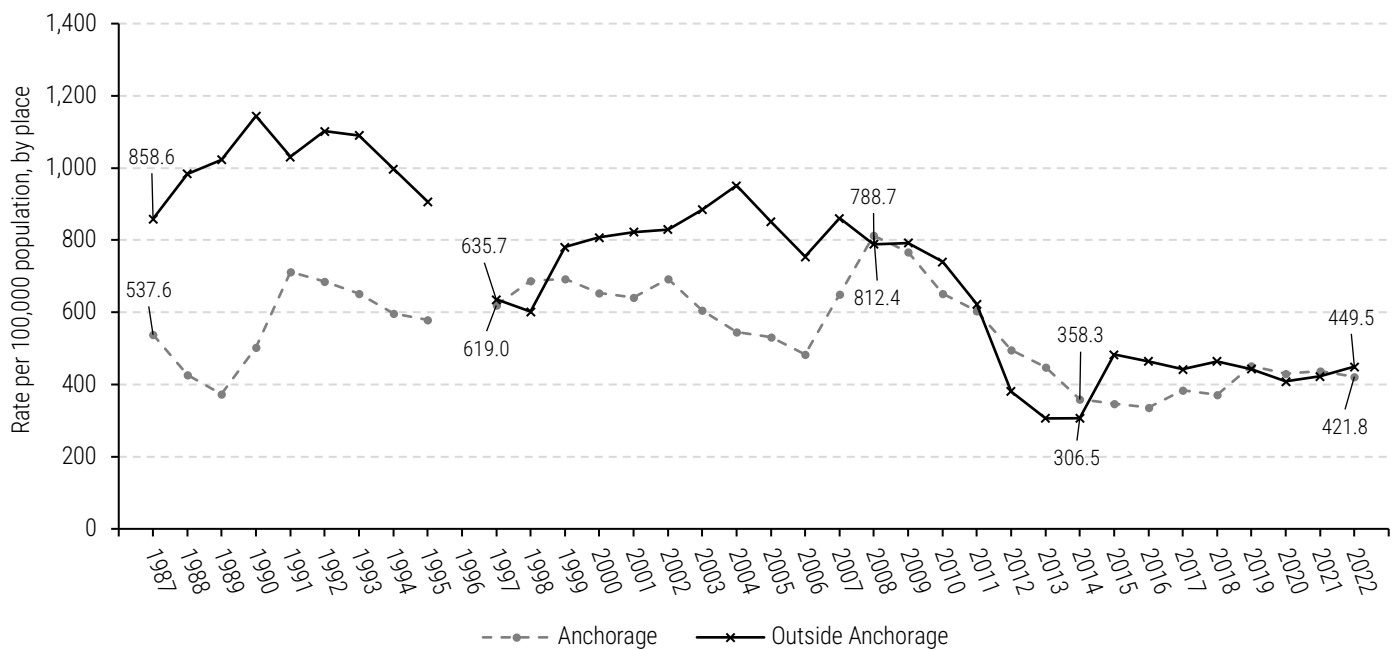
## Alaska DUI Arrest Rates, by Place: 1987-2022

Rus'sel Sampson, M.P.A., Research Professional | Andrew Gonzalez, B.A., Research Professional

This fact sheet explores Alaska Driving Under the Influence (DUI) (AS 28.35.030)<sup>1</sup> arrest rate trends, by place, for the period 1987 to 2022 (the most recent year for which DUI arrest data were available). Place-specific DUI arrest rates were calculated as the number of DUI arrests in Anchorage

and outside Anchorage per 100,000 place-defined population, for each year from 1987 to 2022. DUI arrest data were obtained from the Alaska Department of Public Safety's [Crime in Alaska](#) reports. Alaska population data were obtained from the Alaska [Department of Labor and Workforce Development](#).

Figure 1. Alaska DUI arrest rates, by place: 1987-2022.



### Notes

Arrest data source: Alaska Department of Public Safety, *Crime in Alaska* (1987-2022).  
Population data source: Alaska Department of Labor and Workforce Development.  
DUI arrest data excluded for the year 1996 due to source data inaccuracies.

Figure 1 depicts annual DUI arrest rates for Anchorage and outside Anchorage for the period 1987 to 2022 (Note: DUI arrest data for the year 1996 is excluded due to source data inaccuracies). Overall, both Anchorage and outside Anchorage DUI arrest rates declined between 1987 and 2022. However, the outside Anchorage DUI arrest rate reduction was much more pronounced than that of the Anchorage rate reduction. Whereas the outside Anchorage DUI arrest rate declined from 858.6 per 100,000 in 1987 to

449.5 per 100,000 in 2022 (-47.6%), the Anchorage DUI arrest rate declined from 537.6 per 100,000 to 421.8 per 100,000 (-21.5%) over the same period. As a result, in 1987, the outside Anchorage DUI arrest rate was 46.0% higher than the Anchorage arrest rate, but was only 6.4% higher than the Anchorage arrest rate by 2022.

Both Anchorage and outside Anchorage DUI arrest rates underwent sharp declines between 2008 and 2014. The outside Anchorage DUI arrest rate dropped by more than half, going from 788.7 per 100,000 in 2008 to 306.5 per 100,000 in 2014 (-61.1%). The Anchorage DUI arrest rate also decreased by more than half, going from 812.4 per 100,000 in 2008 to 358.3 per 100,000 in 2014 (-55.9%). After modest rebounds in 2015, both Anchorage and outside Anchorage DUI arrest rates leveled off through 2022, with the outside Anchorage DUI arrest rate (626.6 per 100,000) higher than that of the Anchorage DUI arrest rate (548.1 per 100,000), on average.

**Table 1.** Alaska DUI arrest rates, by place: 1987-2022

| Year | Rate per 100,000 defined place population |                   |
|------|---|-------------------|
|      | Anchorage                                 | Outside Anchorage |
| 1987 | 537.6                                     | 858.6             |
| 1988 | 427.1                                     | 984.0             |
| 1989 | 373.9                                     | 1,022.9           |
| 1990 | 503.7                                     | 1,143.9           |
| 1991 | 711.7                                     | 1,030.8           |
| 1992 | 685.3                                     | 1,102.1           |
| 1993 | 651.9                                     | 1,089.9           |
| 1994 | 596.8                                     | 997.1             |
| 1995 | 578.9                                     | 906.7             |
| 1996 |   |                   |
| 1997 | 619.0                                     | 635.7             |
| 1998 | 687.2                                     | 601.4             |
| 1999 | 692.8                                     | 780.5             |
| 2000 | 653.5                                     | 807.0             |
| 2001 | 640.6                                     | 822.8             |
| 2002 | 692.8                                     | 829.9             |
| 2003 | 606.3                                     | 884.5             |
| 2004 | 545.8                                     | 950.9             |
| 2005 | 530.7                                     | 850.5             |
| 2006 | 484.0                                     | 754.4             |
| 2007 | 650.2                                     | 860.4             |
| 2008 | 812.4                                     | 788.7             |
| 2009 | 766.2                                     | 792.0             |
| 2010 | 651.1                                     | 740.0             |
| 2011 | 603.6                                     | 622.7             |
| 2012 | 496.4                                     | 380.9             |
| 2013 | 447.2                                     | 306.7             |
| 2014 | 358.3                                     | 306.5             |
| 2015 | 346.6                                     | 482.6             |
| 2016 | 336.5                                     | 464.0             |
| 2017 | 383.5                                     | 442.0             |
| 2018 | 370.8                                     | 463.8             |
| 2019 | 451.6                                     | 443.3             |
| 2020 | 430.6                                     | 408.7             |
| 2021 | 436.9                                     | 422.7             |
| 2022 | 421.8                                     | 449.5             |

**Notes**

Arrest data source: Alaska Department of Public Safety, *Crime in Alaska* (1987-2022).

Population data source: Alaska Department of Labor and Workforce Development.

DUI arrest data excluded for the year 1996 due to source data inaccuracies.



1 Under Alaska Statute 25.35.030, a person commits the crime of driving while under the influence of an alcoholic beverage, inhalant, or controlled substance if the person operates or drives a motor vehicle or operates an aircraft or a watercraft while under the influence of an alcoholic beverage, intoxicating liquor, inhalant, or any controlled substance, singly, or in combination.