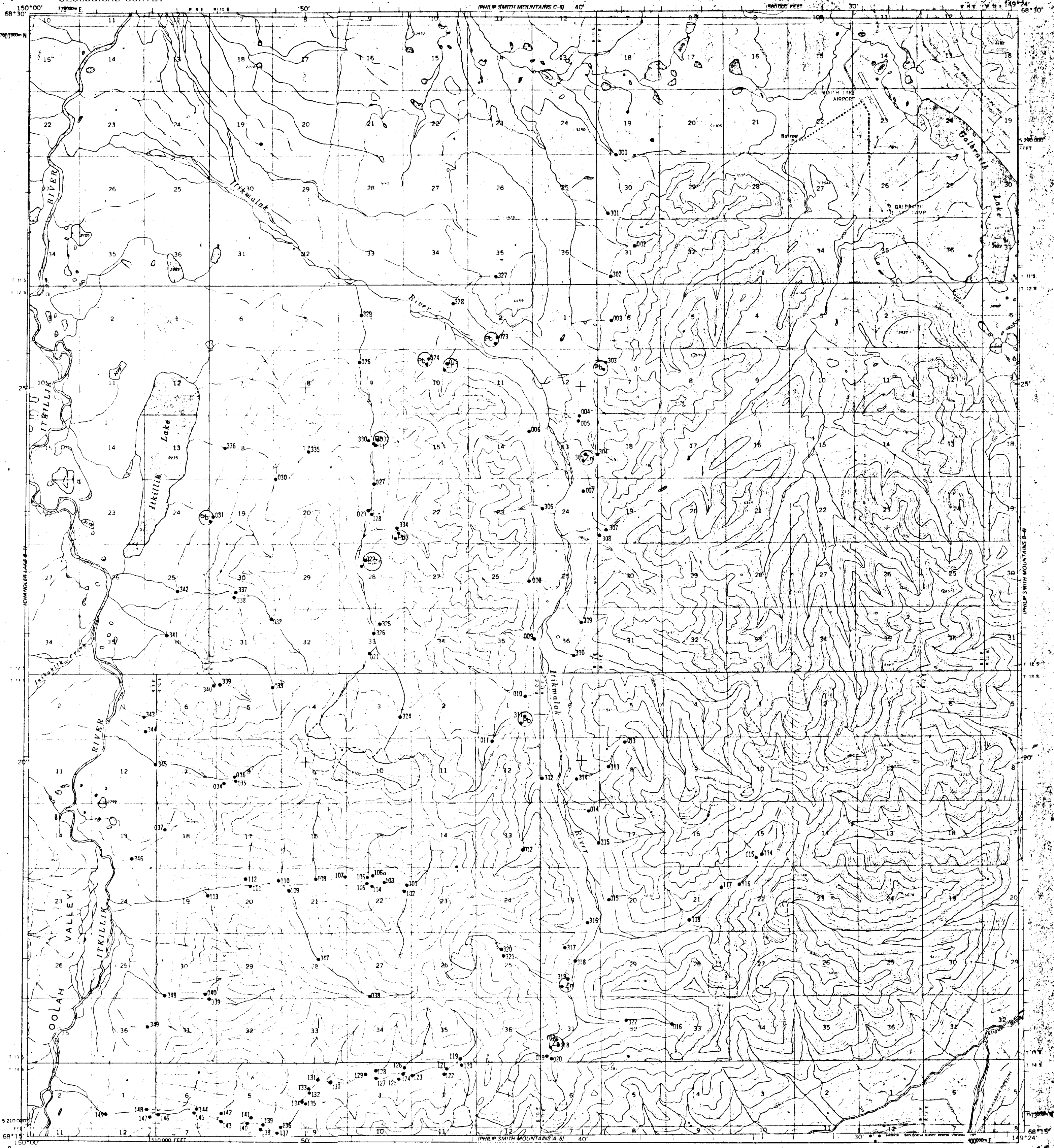


UNITED STATES
DEPARTMENT OF THE INTERIOR
GEOLOGICAL SURVEY

PHILIP SMITH MOUNTAINS (B-5) QUADRANGLE
ALASKA-NORTH SLOPE BOROUGH
1:63 360 SERIES (TOPOGRAPHIC)



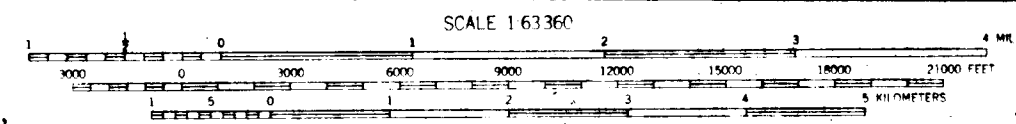
Mapped, edited, and published by the Geological Survey
Control by USGS and USC&GS

Topography by photogrammetric methods from aerial photographs
taken 1970, field annotated 1971. Map not field checked

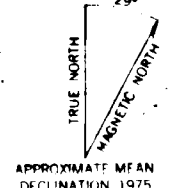
Projection and 1000-meter grid ticks: Universal
Transverse Mercator, zone 6
10,000-foot grid ticks based on Alaska coordinate
system, zone 4, 1927 North American datum

Land lines represent unsurveyed and unmarked locations
predetermined by the Bureau of Land Management
Folio U-11, Umat Meridian

Revision: none available, compiled from aerial photographs
taken, 1975. This information not field checked



CONTOUR INTERVAL 100 FEET
DOTTED LINES REPRESENT 50 FOOT CONTOURS
NATIONAL GEODETIC VERTICAL DATUM OF 1929



PHILIP SMITH MOUNTAINS (B-5), ALASKA
N6815-W14924/15 X 36

FOR SALE BY U.S. GEOLOGICAL SURVEY
FAIRBANKS, ALASKA 99701 DENVER, COLORADO 80225, OR RESTON, VIRGINIA 22092
A FOLDER DESCRIBING TOPOGRAPHIC MAPS AND SYMBOLS IS AVAILABLE ON REQUEST

1971
PHOTO REVISSED 1975