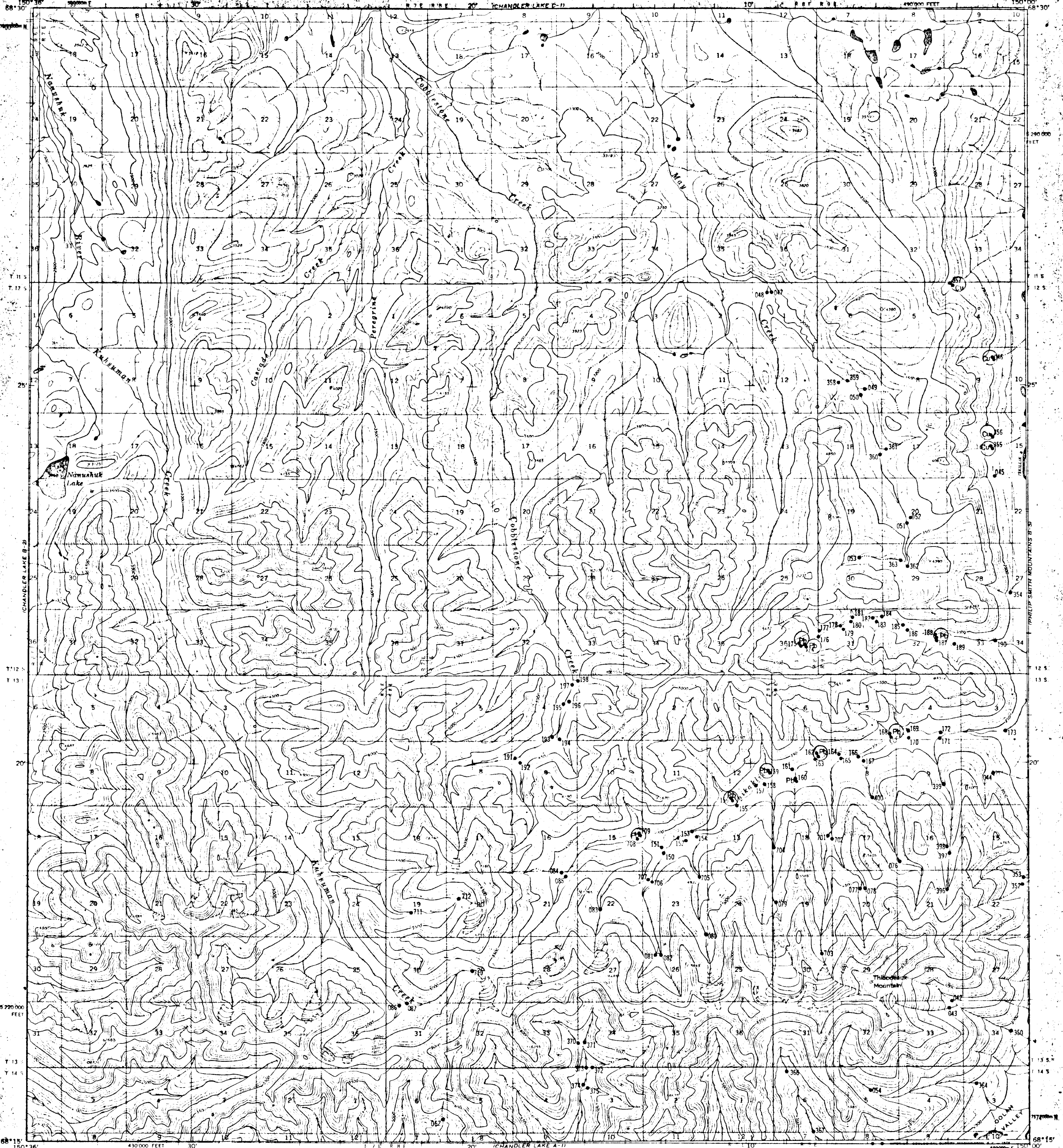
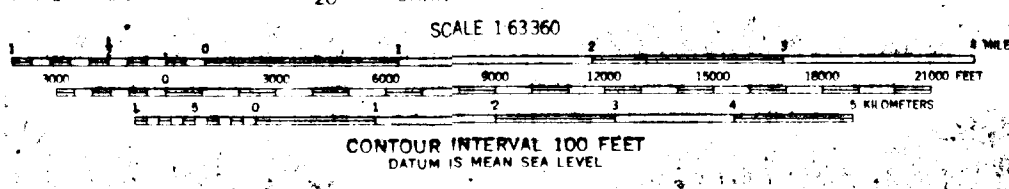
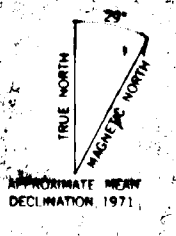


UNITED STATES
DEPARTMENT OF THE INTERIOR
GEOLOGICAL SURVEY

CHANDLER LAKE (B-1) QUADRANGLE
ALASKA
1:63 560 SERIES (TOPOGRAPHIC)



Mapped, edited, and published by the Geological Survey
Control by USGS and USC&GS
Topography by photogrammetric methods from aerial photographs
taken 1970, field annotated 1971. Map not field checked
Projection and 1000-meter grid ticks: Universal
Transverse Mercator, zone 5
10,000-foot grid ticks based on Alaska coordinate
system, zone 4, 1927 North American datum
Land lines represent unsurveyed and unmarked locations
pre-determined by the Bureau of Land Management
Folio U-11, Umiat Meridian



ROAD CLASSIFICATION
No roads or trails in this area

CHANDLER LAKE (B-1), ALASKA
N6815-W15000/15 X 36

FOR SALE BY U.S. GEOLOGICAL SURVEY
FAIRBANKS, ALASKA 99701, DENVER, COLORADO 80225, OR WASHINGTON, D.C. 20248
A FOLDER DESCRIBING TOPOGRAPHIC MAPS AND SYMBOLS IS AVAILABLE ON REQUEST

1971