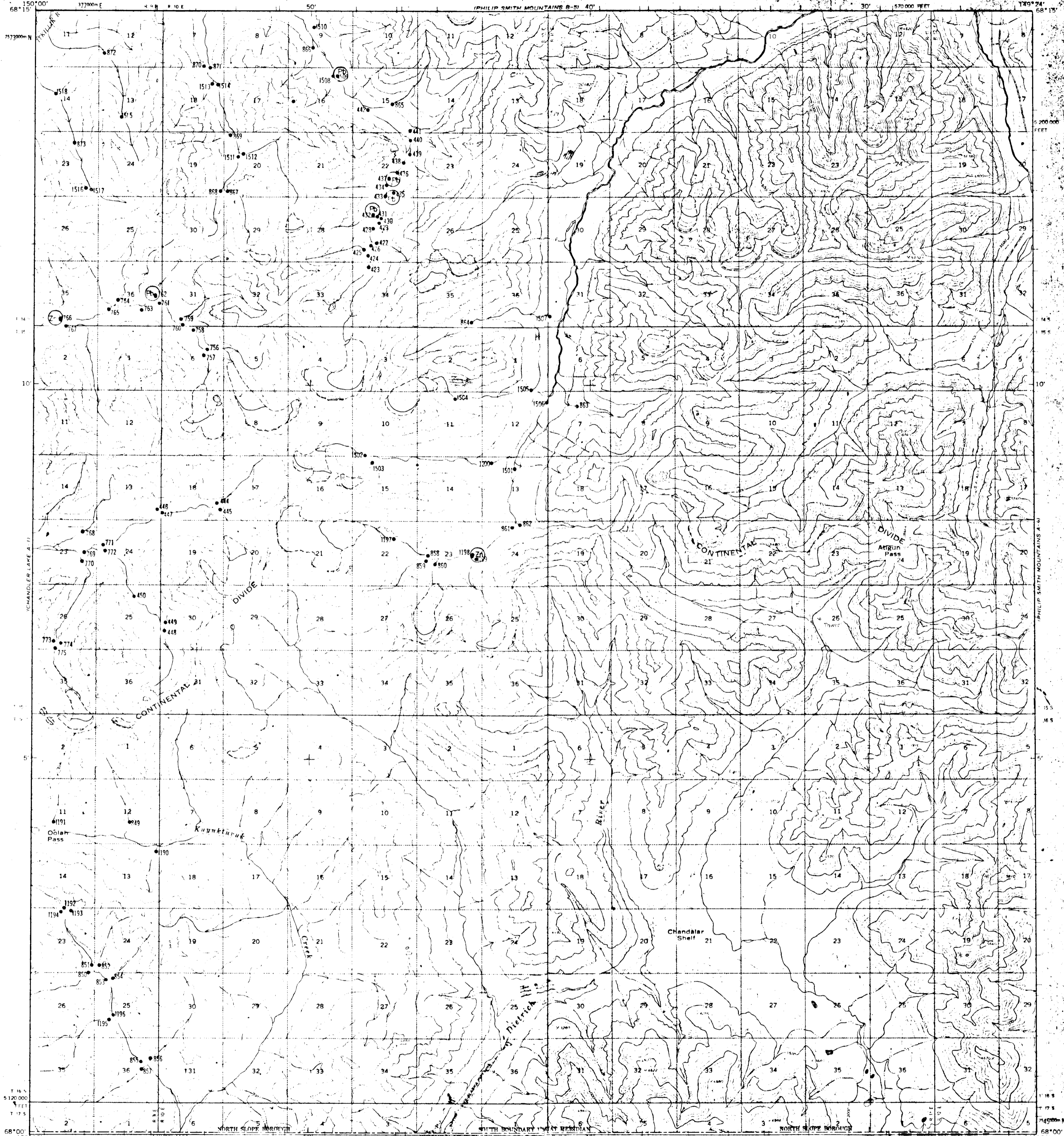
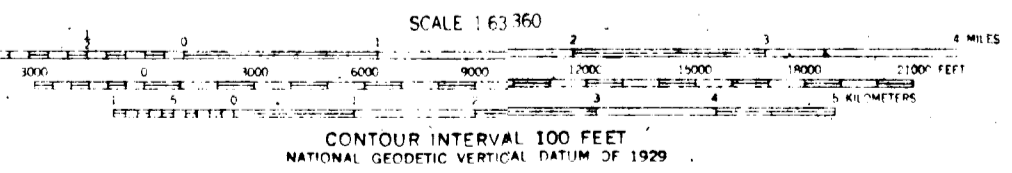
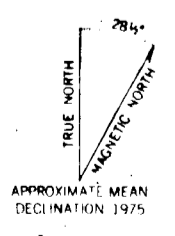


UNITED STATES  
DEPARTMENT OF THE INTERIOR  
GEOLOGICAL SURVEY

PHILIP SMITH MOUNTAINS (A-5) QUADRANGLE  
ALASKA—NORTH SLOPE BOROUGH  
1:63 360 SERIES (TOPOGRAPHIC)



Mapped, edited, and published by the Geological Survey  
Control by USGS and USC&GS  
Topography by photogrammetric methods from aerial photographs  
taken 1970, field annotated 1971. Map not field checked  
Projection and 1000 meter grid ticks: Universal  
Transverse Mercator, zone 6  
10,000-foot grid ticks based on Alaska coordinate  
system, zone 4 1927 North American datum  
I and lines represent unsurveyed and unmarked locations  
predetermined by the Bureau of Land Management  
Folio U-11, Umat Meridian



ROAD CLASSIFICATION  
Light duty ——— Unimproved dirt - - - - -



PHILIP SMITH MOUNTAINS (A-5), ALASKA  
N6800—W14924/15 X 36

FOR SALE BY U.S. GEOLOGICAL SURVEY  
FAIRBANKS, ALASKA 99701, DENVER, COLORADO 80225, OR RESTON, VIRGINIA 22092  
A FOLDER DESCRIBING TOPOGRAPHIC MAPS AND SYMBOLS IS AVAILABLE ON REQUEST

1971  
PHOTOREVISED 1975