

Anchorage Community Survey: Community Satisfaction with Schools

To measure public perceptions of schools, we asked how respondents would rate the schools.* As the map shows, the average response throughout most areas of the municipality fell in the middle of the range, but respondents in several community council areas (Mid-Hillside, Government Hill, Rogers Park, Birchwood, Eagle River Valley, and Bear Valley) gave the schools a higher average rating.

As with the other questions and responses, this mapping is only broadly descriptive, but it does suggest further questions that might yield important information about the school system. One approach might have questions focus on discerning why the residents of the areas who awarded higher average ratings are more satisfied. Is there a relationship between economic level of the respondents and their satisfaction with the schools? The general education level of adults in a household? Does the satisfaction reflect experience with particular schools? Degree of parental involvement? Test scores?

Conversely, the same questions might be used to probe for reasons in those areas in which dissatisfaction registered most strongly (Taku/Campbell, Tudor, Campbell Park, Northstar, Spenard, Fairview, Russian Jack, Northeast Anchorage, and Abbott Loop). Although the average response from these area fell in the middle of the scale for mapping purposes, the median response, as indicated in the table, was actually lower, indicating a greater dissatisfaction level on the part of half of the respondents.

These maps and the accompanying data will be available on the Justice Center website (www.uaa.alaska.edu/just) later this fall. Prior to the posting, additional technical information about the data can be obtained by phone at (907) 786-4885.

* During the survey, respondents were asked to rate schools using 1 to indicate poor and 5 to indicate excellent. For the analysis, the scale was reverse to insure these ratings are coded consistently with other maps (i.e., low score indicates excellence or very satisfied while the higher score indicates poor performance or dissatisfaction.)

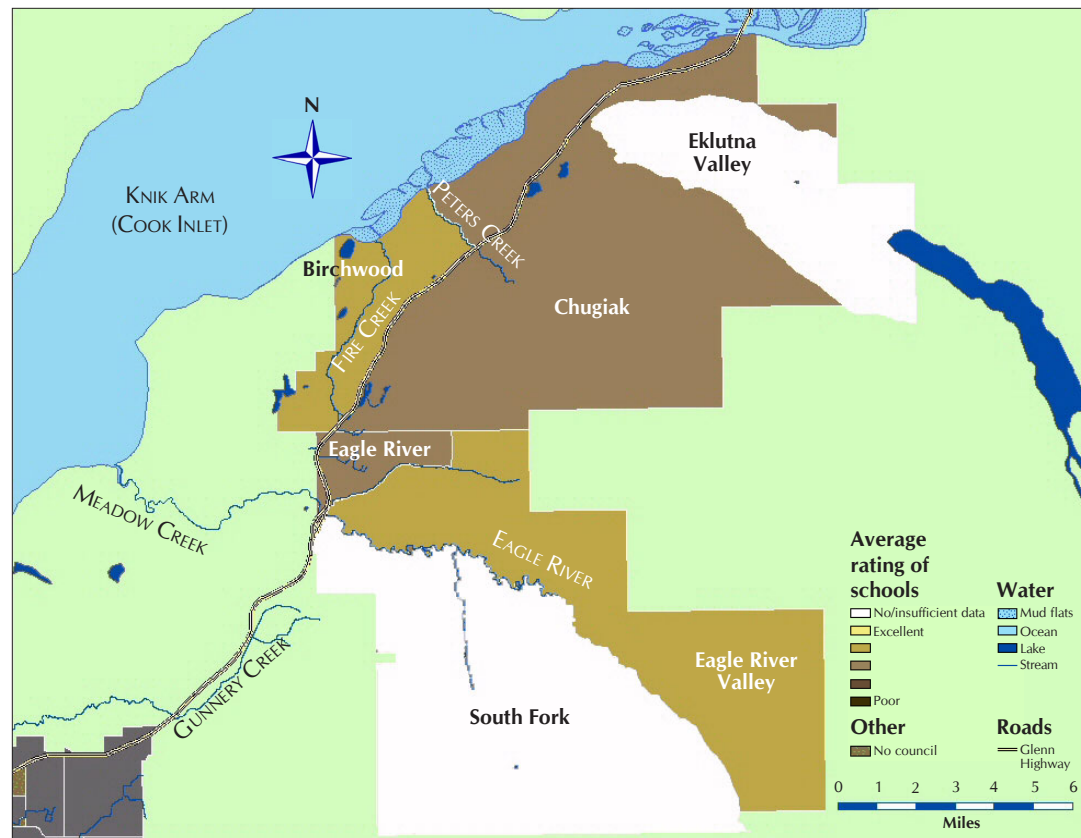


Figure 1. Chugiak/Eagle River



Figure 2. Anchorage

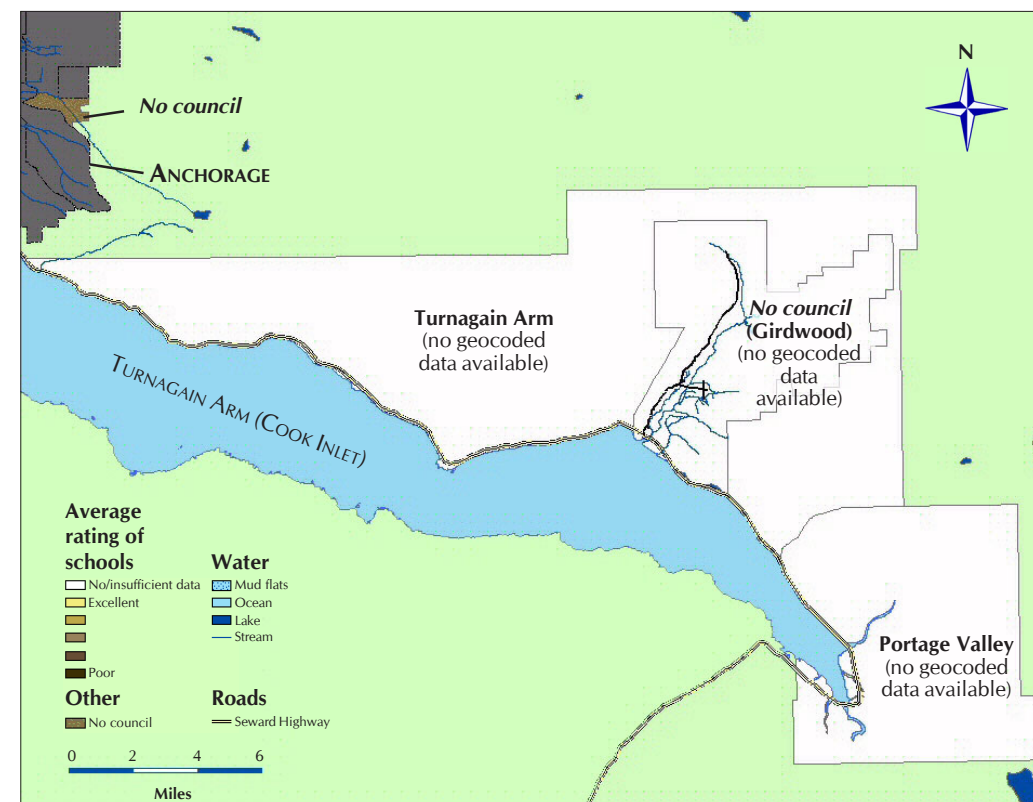


Figure 3. Turnagain Arm/Girdwood/Portage

Schools
Anchorage residents' evaluations of schools.
Higher rating indicates higher level of dissatisfaction.
Scale in this table ranges from 1 = excellent to 3 = poor.

Area	Respondents	Rating		
		Mean	Median	Standard deviation
City totals	1,917	2.26	2.0	0.97
Non-geocoded respondents	582	2.28	2.0	1.00
Community councils				
1 Chugiak	26	2.30	2.0	1.30
2 Eklutna Valley	0	---	---	---
3 Birchwood	10	2.00	2.0	0.93
4 Eagle River Valley	66	2.02	2.0	1.01
5 Eagle River	26	2.40	2.0	0.99
6 South Fork	4	2.25	2.5	0.96
7 Government Hill	7	1.50	1.5	0.55
8 Northeast Anchorage	132	2.66	3.0	1.02
9 Mountain View	28	2.46	2.0	1.22
10 Downtown	3	2.00	2.0	1.00
11 South Addition	44	2.09	2.0	1.08
12 Russian Jack Park	45	2.80	3.0	1.27
15 Fairview	50	2.57	3.0	0.97
16 Turnagain	54	2.46	2.0	0.84
17 Airport Heights	39	2.41	2.0	1.16
18 Spenard	81	2.74	3.0	1.08
19 North Star	6	2.67	3.0	1.03
22 Rogers Park	17	2.00	2.0	1.03
24 University Area	55	2.40	2.0	1.00
25 Scenic Foothills	58	2.27	2.0	0.87
27 Tudor Area	16	2.75	3.0	1.06
29 Campbell Park	38	2.71	3.0	0.94
30 Sand Lake	119	2.21	2.0	1.06
31 Taku/Campbell	68	2.65	3.0	1.10
32 Basher	2	2.00	2.0	1.41
33 Abbott Loop	101	2.65	3.0	1.11
34 Hillside East	24	2.38	2.0	1.09
35 Mid-Hillside	22	1.94	2.0	0.73
36 Bayshore/Klatt	68	2.29	2.0	0.87
37 Huffman/O'Malley	64	2.31	2.0	1.06
38 Glen Alps	1	1.00	1.0	---
39 Old Seward/Oceanview	32	2.46	2.0	1.11
40 Rabbit Creek	24	2.45	2.0	1.26
42 Bear Valley	5	2.00	2.0	1.00
43 Turnagain Arm	0	---	---	---
45 Portage Valley	0	---	---	---

Numerical breaking points for map colors:

