

# ANCHORAGE COMMUNITY INDICATORS

A PUBLICATION OF THE JUSTICE CENTER

September 2003

UNIVERSITY of ALASKA ANCHORAGE

Series 1, No. 3

## Anchorage Community Survey: Community Satisfaction with Public Transportation

To measure public satisfaction with public transportation, we asked the question “How satisfied are you with the availability of public transportation?” We elicited answers along a four-point scale—*very satisfied*, *somewhat satisfied*, *somewhat dissatisfied*, *very dissatisfied*. The average response in over half of the community council areas showed dissatisfaction. These areas included neighborhoods as diverse as Eagle River Valley, Mountain View, Sand Lake, and Mid-Hillside, which differ with regard to density of both residential and commercial development, income level, housing types, and various other demographics.

When the map is viewed in conjunction with the table, it can be seen that the level of dissatisfaction is most extreme in Rogers Park, Hillside East, Mid-Hillside, Huffman/O’Malley and Rabbit Creek. Only respondents from the Government Hill community council area approached being very satisfied with public transportation.

A further study might explore this issue more deeply by looking at respondent use of public transportation (did they use it, when, and for what purpose); proximity of residence to bus routes; proximity of bus routes to destinations; and dependence upon public transportation. It also might be instructive to look at these same issues in areas expressing a higher level of satisfaction (Northeast Anchorage, Government Hill, Chugiak, and Old Seward/Ocean View) and compare them to areas expressing a lesser degree of satisfaction.

*These maps and the accompanying data will be available on the Justice Center website ([www.uaa.alaska.edu/just](http://www.uaa.alaska.edu/just)) later this fall. Prior to the posting, additional technical information about the data can be obtained by phone at (907) 786-4885.*

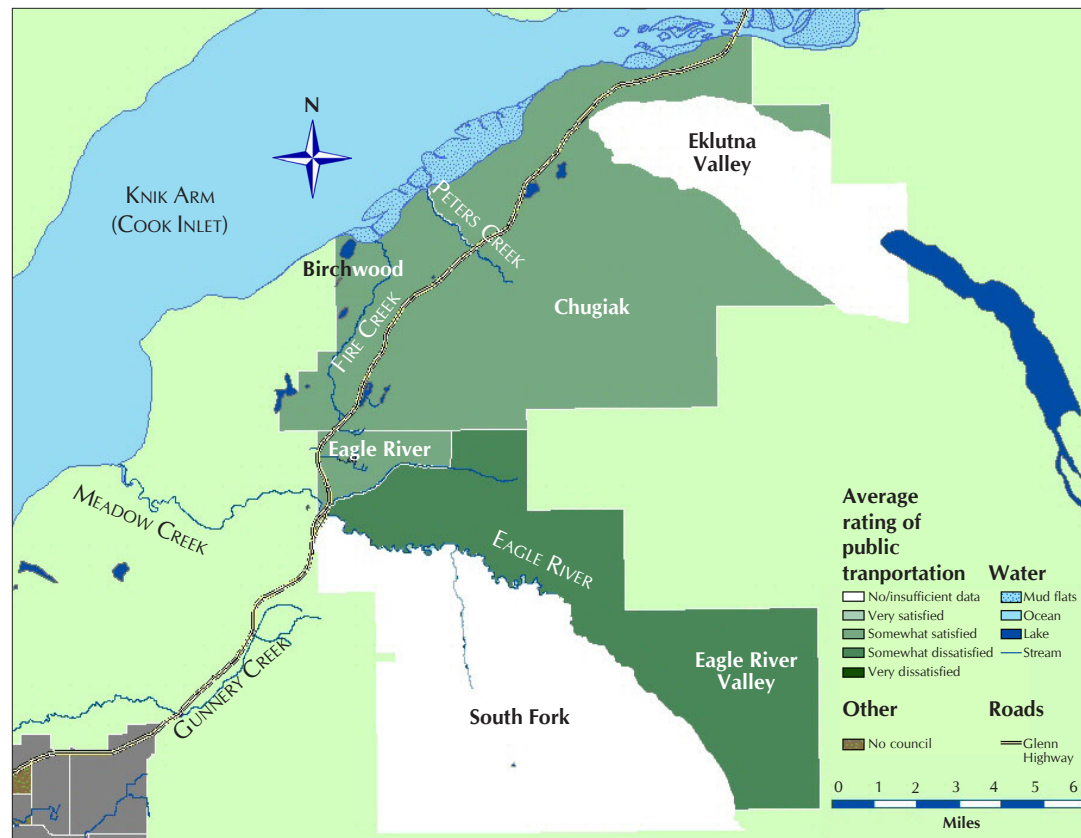


Figure 1. Chugiak/Eagle River



Figure 2. Anchorage

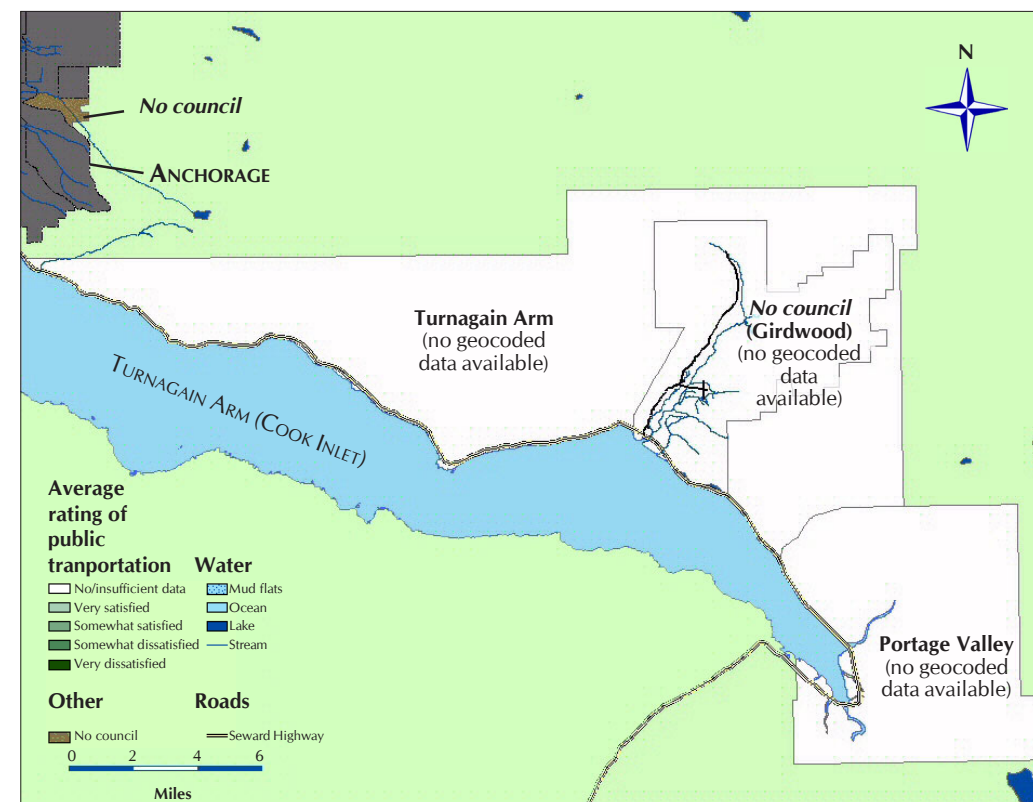


Figure 3. Turnagain Arm/Girdwood/Portage

### Public Transportation

“How satisfied are you with the availability of public transportation?”

Higher rating indicates higher level of dissatisfaction.

1 = Very satisfied; 2 = Somewhat satisfied; 3 = Somewhat dissatisfied; 4 = Very dissatisfied.

Area	Respondents	Rating		
		Mean	Median	Standard deviation
<b>City totals</b>	<b>1,917</b>	<b>2.08</b>	<b>2.0</b>	<b>0.99</b>
<b>Non-geocoded respondents</b>	582	2.09	2.0	1.01
<b>Community councils</b>				
1 Chugiak	26	2.00	2.0	1.10
2 Eklutna Valley	0	---	---	---
3 Birchwood	10	1.88	2.0	0.64
4 Eagle River Valley	66	2.10	2.0	0.93
5 Eagle River	26	1.80	2.0	0.71
6 South Fork	4	1.00	1.0	0.00
7 Government Hill	7	1.29	1.0	0.49
8 Northeast Anchorage	132	1.89	2.0	0.91
9 Mountain View	28	2.04	2.0	0.82
10 Downtown	3	3.00	3.0	1.41
11 South Addition	44	2.13	2.0	1.01
12 Russian Jack Park	45	1.92	2.0	1.01
15 Fairview	50	2.00	2.0	0.90
16 Turnagain	54	2.00	2.0	0.91
17 Airport Heights	39	1.92	2.0	1.05
18 Spenard	81	2.09	2.0	1.04
19 North Star	6	2.00	2.0	1.10
22 Rogers Park	17	2.83	3.0	1.03
24 University Area	55	2.00	2.0	0.92
25 Scenic Foothills	58	1.57	1.0	0.76
27 Tudor Area	16	2.23	2.0	1.24
29 Campbell Park	38	2.24	2.0	1.03
30 Sand Lake	119	2.35	2.0	1.12
31 Taku/Campbell	68	1.88	2.0	0.78
32 Basher	2	3.00	3.0	1.41
33 Abbott Loop	101	2.03	2.0	0.95
34 Hillside East	24	2.58	3.0	1.02
35 Mid-Hillside	22	2.65	3.0	1.11
36 Bayshore/Klatt	68	2.10	2.0	1.03
37 Huffman/O’Malley	64	2.52	2.0	0.99
38 Glen Alps	1	2.00	2.0	
39 Old Seward/Oceanview	32	1.87	2.0	0.86
40 Rabbit Creek	24	2.48	2.0	1.16
42 Bear Valley	5	2.00	2.0	0.71
43 Turnagain Arm	0	---	---	---
45 Portage Valley	0	---	---	---

#### Numerical breaking points for map colors:

No data or fewer than 5 respondents (white) Rating = 0	Very satisfied (light green) Rating = .00001-1.00000	Somewhat satisfied (medium green) Rating = 1.00001-2.00000	Somewhat dissatisfied (dark green) Rating = 2.00001-3.00000	Very dissatisfied (darkest green) Rating = 3.00001-4.00000
---	---	---	--	---