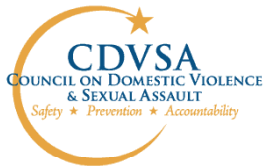


Alaska Victimization Survey (AVS): Intimate Partner and Sexual Violence in the Matanuska-Susitna Borough



Council on Domestic Violence and Sexual Assault
Lauree Morton



University of Alaska Anchorage Justice Center
André B. Rosay, Brad Myrstol, Marny Rivera

Fall 2013



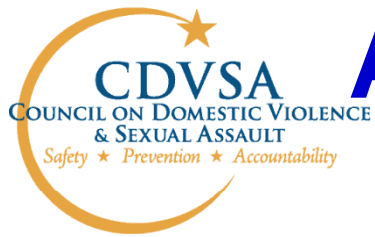
UNIVERSITY *of* ALASKA ANCHORAGE



AK Victimization Survey in the Mat-Su Borough



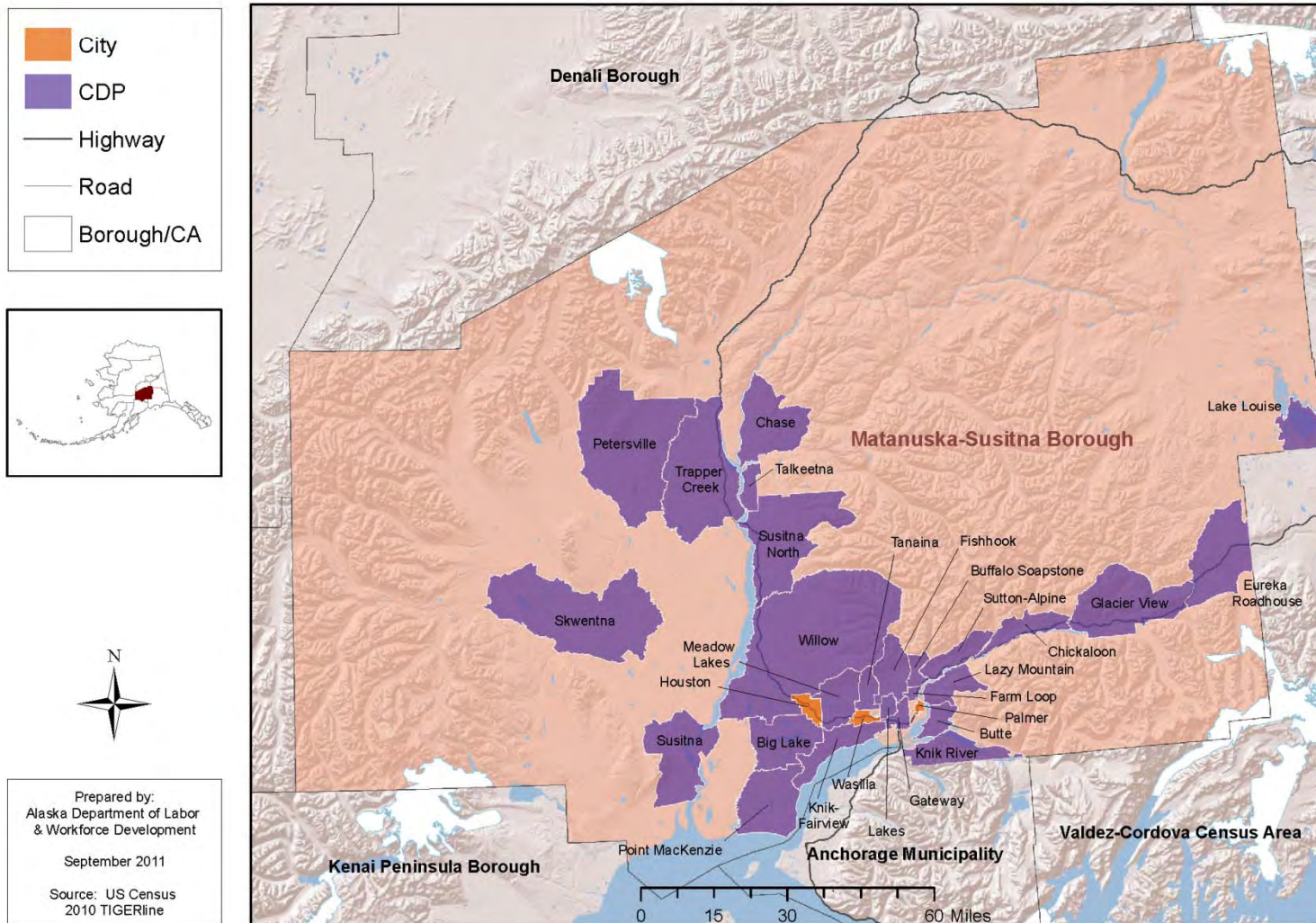
- Designed to establish a baseline for estimates of intimate partner & sexual violence in the Matanuska-Susitna Borough.
- Modeled after the National Intimate Partner and Sexual Violence Surveillance System (CDC) & the 2010 Alaska Victimization Survey (UAA).
- Surveys were administered by RTI International.
- Surveys were conducted by phone in the Mat-Su Borough (spring/summer 2013).



AK Victimization Survey in the Mat-Su Borough



Matanuska-Susitna Borough





AK Victimization Survey in the Mat-Su Borough



- Survey was approved by multiple institutional review boards and supported by Alaska Family Services and the Mat-Su Health Foundation.
- Survey procedures were designed to maximize the safety and confidentiality of all respondents.
- Respondents were randomly selected (only adult females were eligible to participate). Called both land lines and cell phones.
- Final sample includes 1,190 adult women surveyed from April to July 2013.



AK Victimization Survey in the Mat-Su Borough



- The sample provides a good representation of the population. Nonetheless, all results are weighted to control for selection, non-response, and coverage.
- There are some very important limitations to this survey. In particular, respondents were limited to English-speaking adult women residing in a household with at least one land or cell phone line. Surveys were only conducted from April to July 2013.



AK Victimization Survey in the Mat-Su Borough



- The questions in the survey are very graphic because they are “behaviorally specific.”
- For example, we ask: “How many of your romantic or sexual partners have ever slapped you?”
 - Avoid legal definitions (e.g., ‘assault’)
 - Avoid defining victims, survivors
 - Attribute blame to the perpetrators



Intimate Partner Violence Definitions



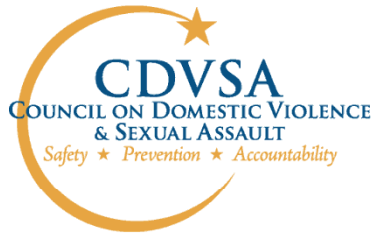
- Intimate partner violence includes two measures:
 - *A – Threats of physical violence.*
 - *B – Physical violence.*
 - *Both include intimate partners only, defined as romantic or sexual partners.*
 - *Measures are then combined into a single ‘intimate partner violence’ composite.*
- Threats of physical violence by intimate partners:
 - *Have your romantic or sexual partners made threats to physically harm you?*



Intimate Partner Violence Definitions



- **Physical violence by intimate partners:**
 - *Have your romantic or sexual partners...*
 - *Slapped you?*
 - *Pushed or shoved you?*
 - *Hit you with a fist or something hard?*
 - *Kicked you?*
 - *Hurt you by pulling your hair?*
 - *Slammed you against something?*
 - *Tried to hurt you by choking or suffocating you?*
 - *Beaten you?*
 - *Burned you on purpose?*
 - *Used a knife or gun on you?*



Intimate Partner Violence Estimates



Lifetime Estimates	Estimated %	Estimated N (out of 30,539)
Intimate Partner Violence ¹	45.5%	13,895
A. Threats	27.9%	8,520
B. Physical Violence	44.9%	13,712

1 – Includes both threats of physical violence and physical violence by intimate partners.

- *45.5% of adult women in the Mat-Su Borough (or 13,895) experienced intimate partner violence in their lifetime,*
 - *27.9% (or 8,520) experienced threats of physical violence,*
 - *44.9% (or 13,712) experienced physical violence.*



Intimate Partner Violence Estimates



Past Year Estimates	Estimated %	Estimated N (out of 30,539)
Intimate Partner Violence ¹	7.6%	2,321
A. Threats	3.7%	1,130
B. Physical Violence	7.2%	2,199

1 – Includes both threats of physical violence and physical violence by intimate partners.

- *7.6% of adult women in the Mat-Su Borough (or 2,321) experienced intimate partner violence in the past year,*
 - *3.7% (or 1,130) experienced threats of physical violence,*
 - *7.2% (or 2,199) experienced physical violence.*



Sexual Violence Definitions



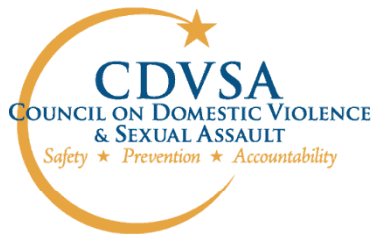
- **Sexual violence includes two measures:**
 - *A – Alcohol or drug involved sexual assault.*
 - *B – Forcible sexual assault.*
 - *Measures are not limited to intimate partners.*
 - *Measures are then combined into a single ‘sexual violence’ composite.*
- **Alcohol or drug involved sexual assault:**
 - *When you were alcohol or drug intoxicated and unable to consent, has anyone...*
 - *Had vaginal sex with you?*
 - *Made you receive anal sex?*
 - *Made you perform oral sex?*
 - *Made you receive oral sex?*



Sexual Violence Definitions



- **Forcible sexual assault:**
 - *Has anyone used physical force or threats to physically harm you to...*
 - *Make you have vaginal sex?*
 - *Make you receive anal sex?*
 - *Make you perform oral sex?*
 - *Make you receive oral sex?*
 - *Put their fingers or an object in your vagina or anus?*
 - *Try to have vaginal, oral, or anal sex with you?*



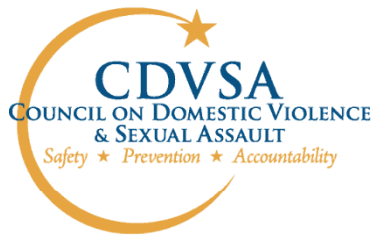
Sexual Violence Estimates



Lifetime Estimates	Estimated %	Estimated N (out of 30,539)
Sexual Violence ¹	33.7%	10,292
A. Alcohol or Drug Involved Sexual Assault	22.3%	6,810
B. Forcible Sexual Assault	26.1%	7,971

1 – Includes both alcohol or drug involved sexual assault and forcible sexual assault.

- *33.7% of adult women in the Mat-Su Borough (or 10,292) experienced sexual violence in their lifetime,*
 - *22.3% (or 6,810) experienced at least one alcohol or drug involved sexual assault,*
 - *26.1% (or 7,971) experienced at least one forcible sexual assault.*



Sexual Violence Estimates

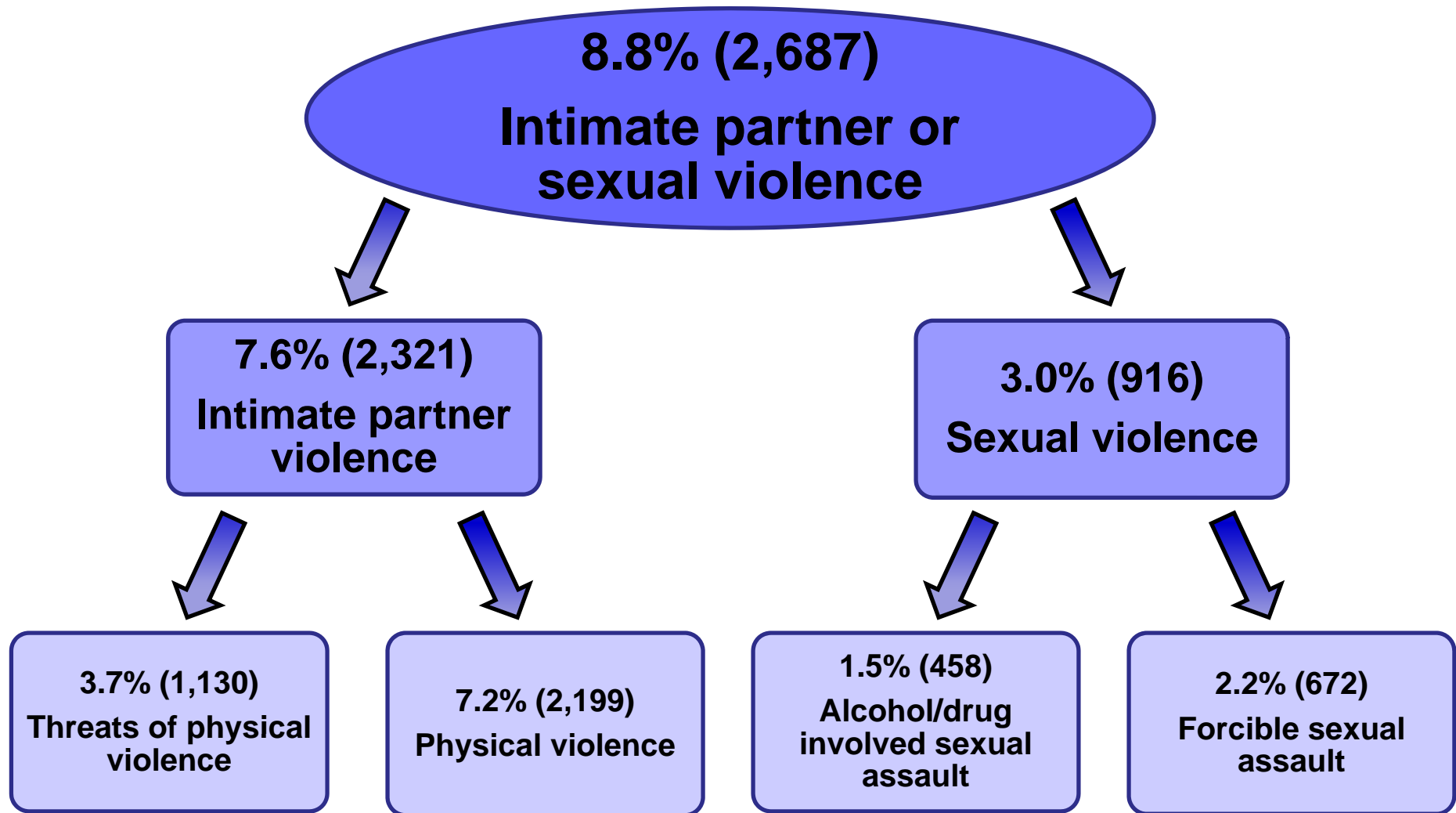


Past Year Estimates	Estimated %	Estimated N (out of 30,539)
Sexual Violence ¹	3.0%	916
A. Alcohol or Drug Involved Sexual Assault	1.5%	458
B. Forcible Sexual Assault	2.2%	672

1 – Includes both alcohol or drug involved sexual assault and forcible sexual assault.

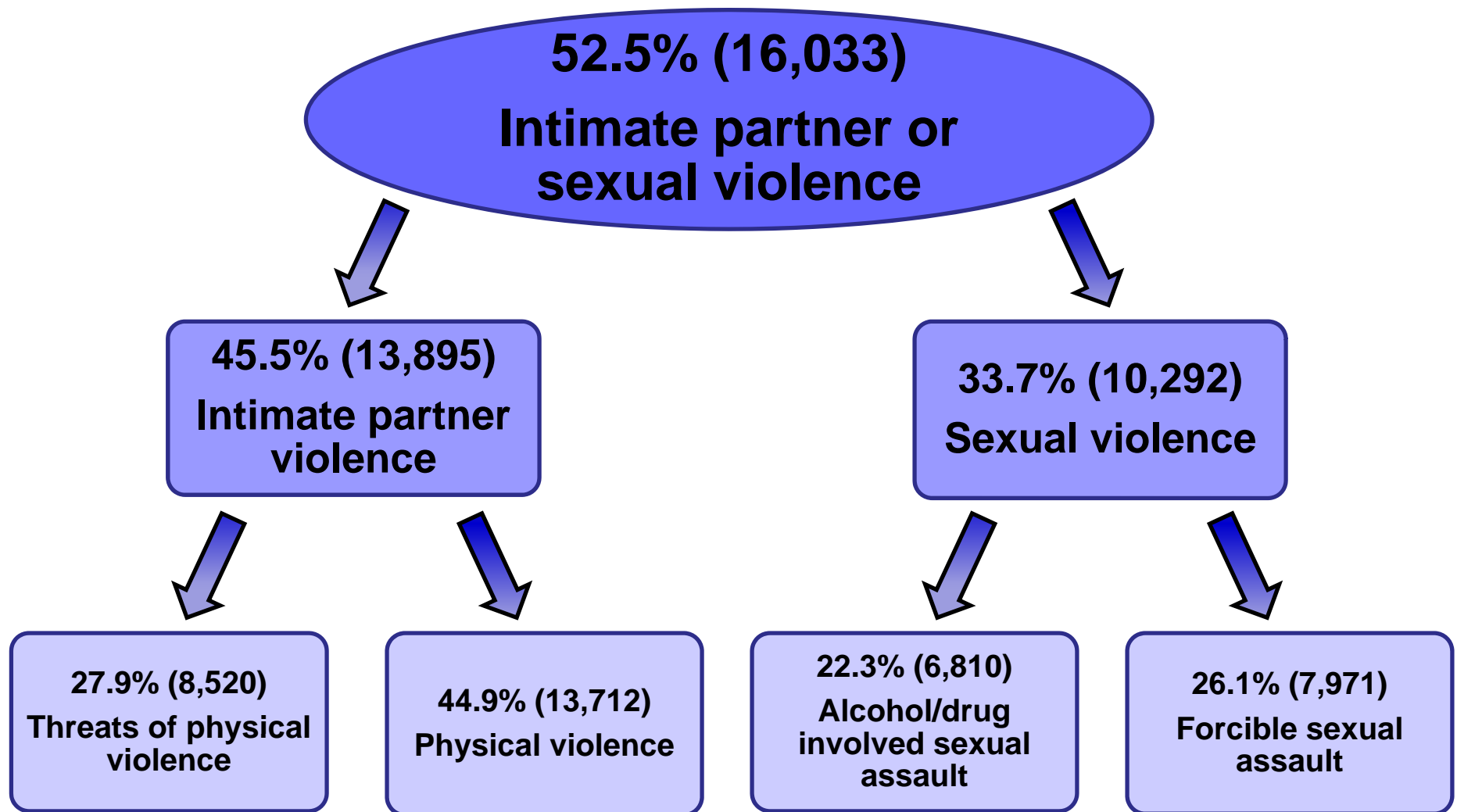
- *3.0% of adult women in the Mat-Su Borough (or 916) experienced sexual violence in the past year,*
 - *1.5% (or 458) experienced at least one alcohol or drug involved sexual assault,*
 - *2.2% (or 672) experienced at least one forcible sexual assault.*

Summary of Past Year Estimates



Note: percentages do not sum because some respondents experienced multiple victimizations.

Summary of Lifetime Estimates



Note: percentages do not sum because some respondents experienced multiple victimizations.



Lifetime Estimates

**Out of every 100 adult women
in the Matanuska-Susitna Borough:**

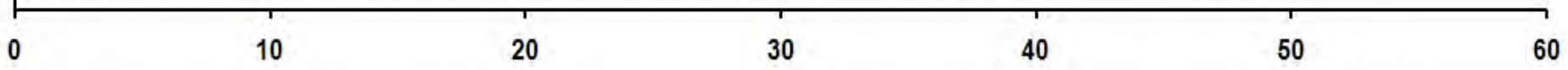
46 experienced intimate partner violence (IPV):



34 experienced sexual violence:



53 experienced IPV, sexual violence, or both:





Important Limitations



- Survey only provides a regional average and masks important differences (for example, differences by age or race/ethnicity).
- Survey excluded non-English speaking women, women without phone access, and women not living in a residence (e.g., shelters, hospitals, homeless, prisons). Estimates may be significantly higher among women excluded from the survey.



Important Limitations



- Measured *number of victims*, not *number of victimizations*. The number of victimizations is higher than the number of victims.
- Survey did not measure all forms of intimate partner violence or sexual violence. Estimates are therefore conservative.
- Estimates may also be conservative because of the continuing stigma of reporting intimate partner and sexual violence.



A Special Thank You!



We sincerely thank the women in the Matanuska-Susitna Borough who invested time and effort to participate in the Alaska Victimization Survey.

They re-lived horrendous experiences – experiences no one should be subjected to – to help the rest of us understand the extent of intimate partner and sexual violence in the Matanuska-Susitna Borough. Thank you!



A Special Thank You!



We also thank Alaska Family Services and the Mat-Su Health Foundation



<http://www.akafs.org>

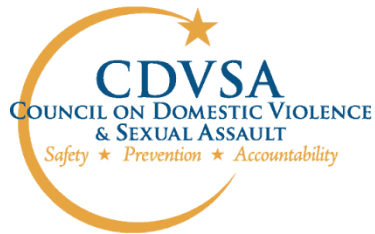


<http://www.healthymatsu.org>

Alaska Family Services responds to the needs of women and children in crisis in the Mat-Su Borough. The DV/SA program provides an emergency shelter for women and their children escaping abusive situations. Their 24 hour crisis line is 907-746-4080 (or toll free 1-866-746-4080).



Contacts



Council on Domestic Violence and Sexual Assault

Lauree Morton, Executive Director (Juneau)

(907) 465-5503

lauree.morton@alaska.gov



University of Alaska Anchorage Justice Center

André B. Rosay, Director (Anchorage)

(907) 786-1821

abrosay@uaa.alaska.edu